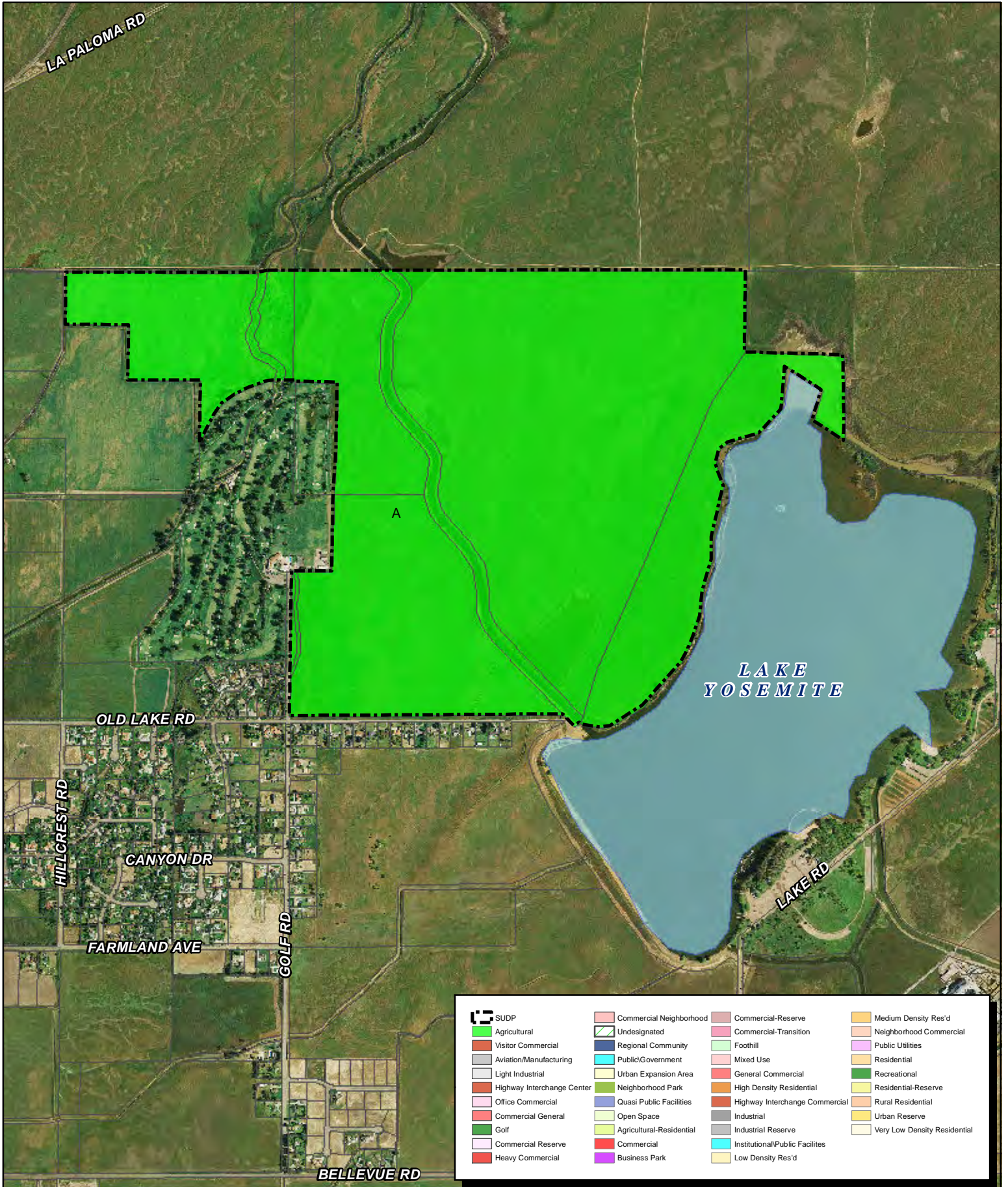


General Plan - Yosemite Lake Estates SUDP



SUDP	Commercial Neighborhood	Commercial-Reserve	Medium Density Res'd
Agricultural	Undesignated	Commercial-Transition	Neighborhood Commercial
Visitor Commercial	Regional Community	Foothill	Public Utilities
Aviation/Manufacturing	Public/Government	Mixed Use	Residential
Light Industrial	Urban Expansion Area	General Commercial	Recreational
Highway Interchange Center	Neighborhood Park	High Density Residential	Residential-Reserve
Office Commercial	Quasi Public Facilities	Highway Interchange Commercial	Rural Residential
Commercial General	Open Space	Industrial	Urban Reserve
Golf	Agricultural-Residential	Industrial Reserve	Very Low Density Residential
Commercial Reserve	Commercial	Institutional/Public Facilities	
Heavy Commercial	Business Park	Low Density Res'd	



0 2,000 4,000 Feet

PRODUCED BY MERCED COUNTY PLANNING AND COMMUNITY DEVELOPMENT DEPARTMENT
 Disclaimer: The information displayed on this map is for reference purposes only. Any questions regarding this map should be directed to the Merced County Planning & Community Development Department.



Zoning - Yosemite Lake Estates SUDP

