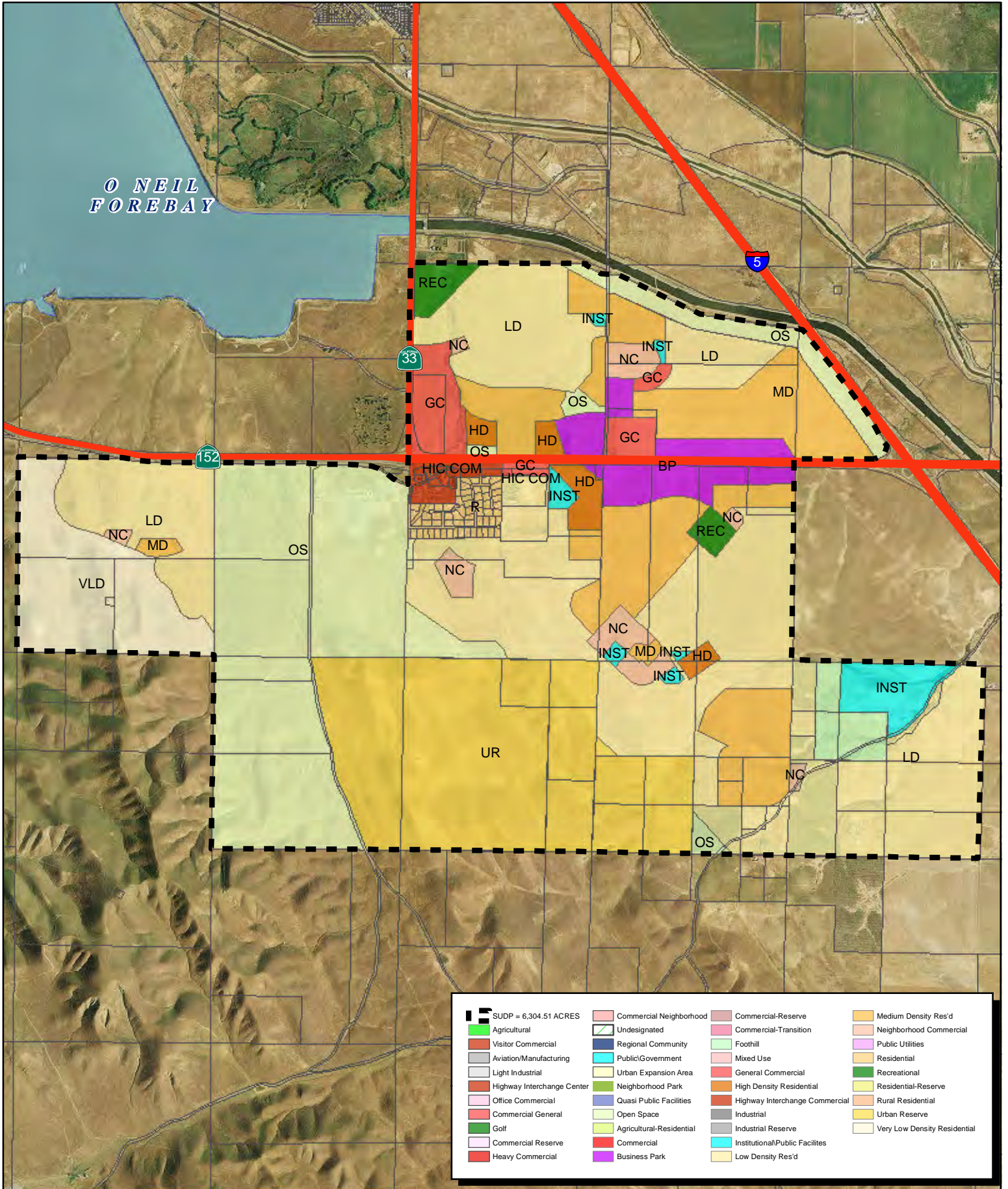


General Plan - Community of Villages of Laguna San Luis

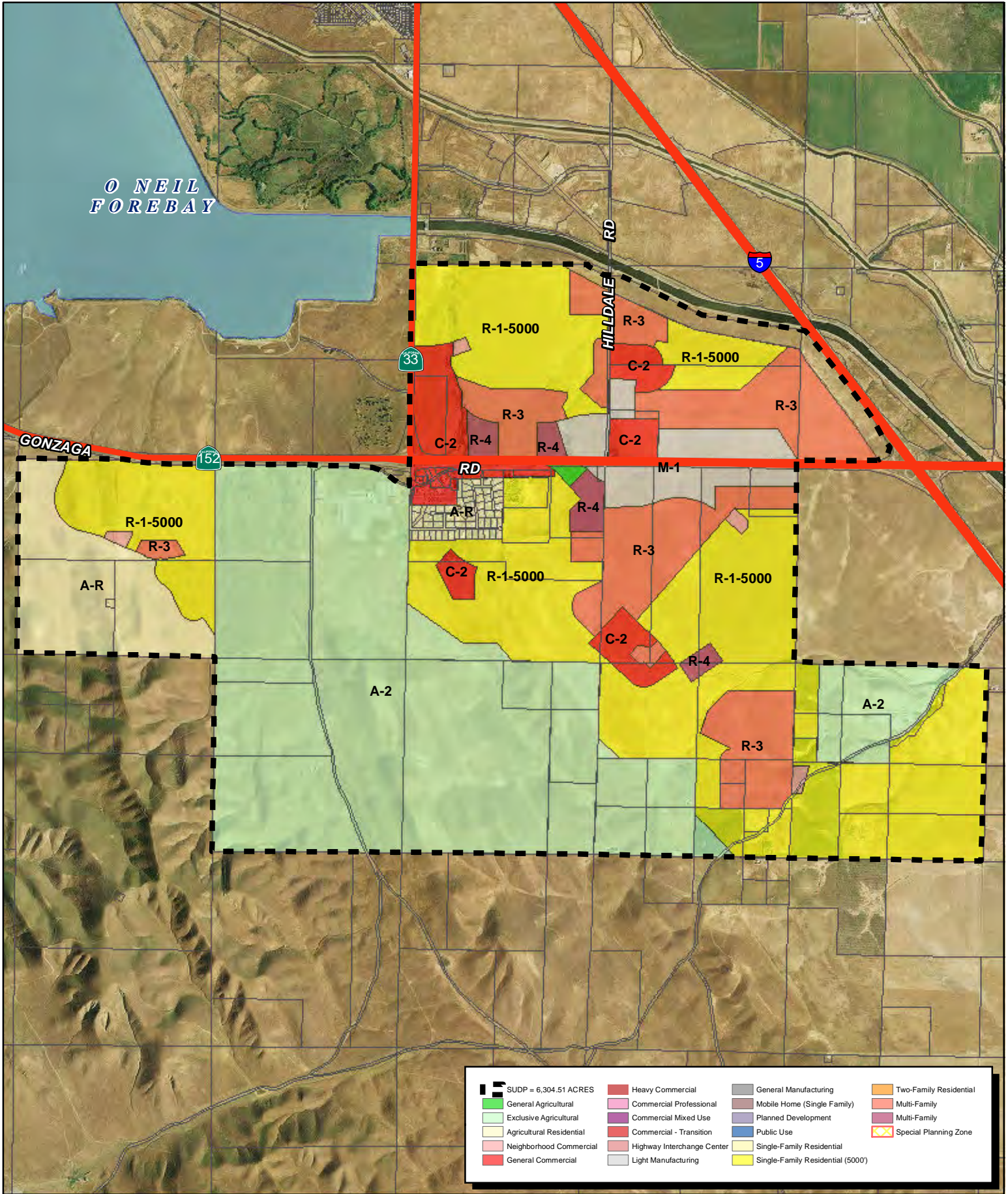


SUDP = 6,304.51 ACRES	Commercial Neighborhood	Commercial-Reserve	Medium Density Res'd
Agricultural	Undesignated	Commercial-Transition	Neighborhood Commercial
Visitor Commercial	Regional Community	Foothill	Public Utilities
Aviation/Manufacturing	Public/Government	Mixed Use	Recreational
Light Industrial	Urban Expansion Area	General Commercial	Residential-Reserve
Highway Interchange Center	Neighborhood Park	High Density Residential	Rural Residential
Office Commercial	Quasi Public Facilities	Highway Interchange Commercial	Urban Reserve
Commercial General	Open Space	Industrial	Very Low Density Residential
Golf	Agricultural-Residential	Industrial Reserve	
Commercial Reserve	Commercial	Institutional/Public Facilities	
Heavy Commercial	Business Park	Low Density Res'd	



0 1 2 Miles

Zoning - Community of Villages of Laguna San Luis



0 1 2 Miles

PRODUCED BY MERCED COUNTY PLANNING AND COMMUNITY DEVELOPMENT DEPARTMENT

Disclaimer: The information displayed on this map is for reference purposes only. Any questions regarding this map should be directed to the Merced County Planning & Community Development Department.

