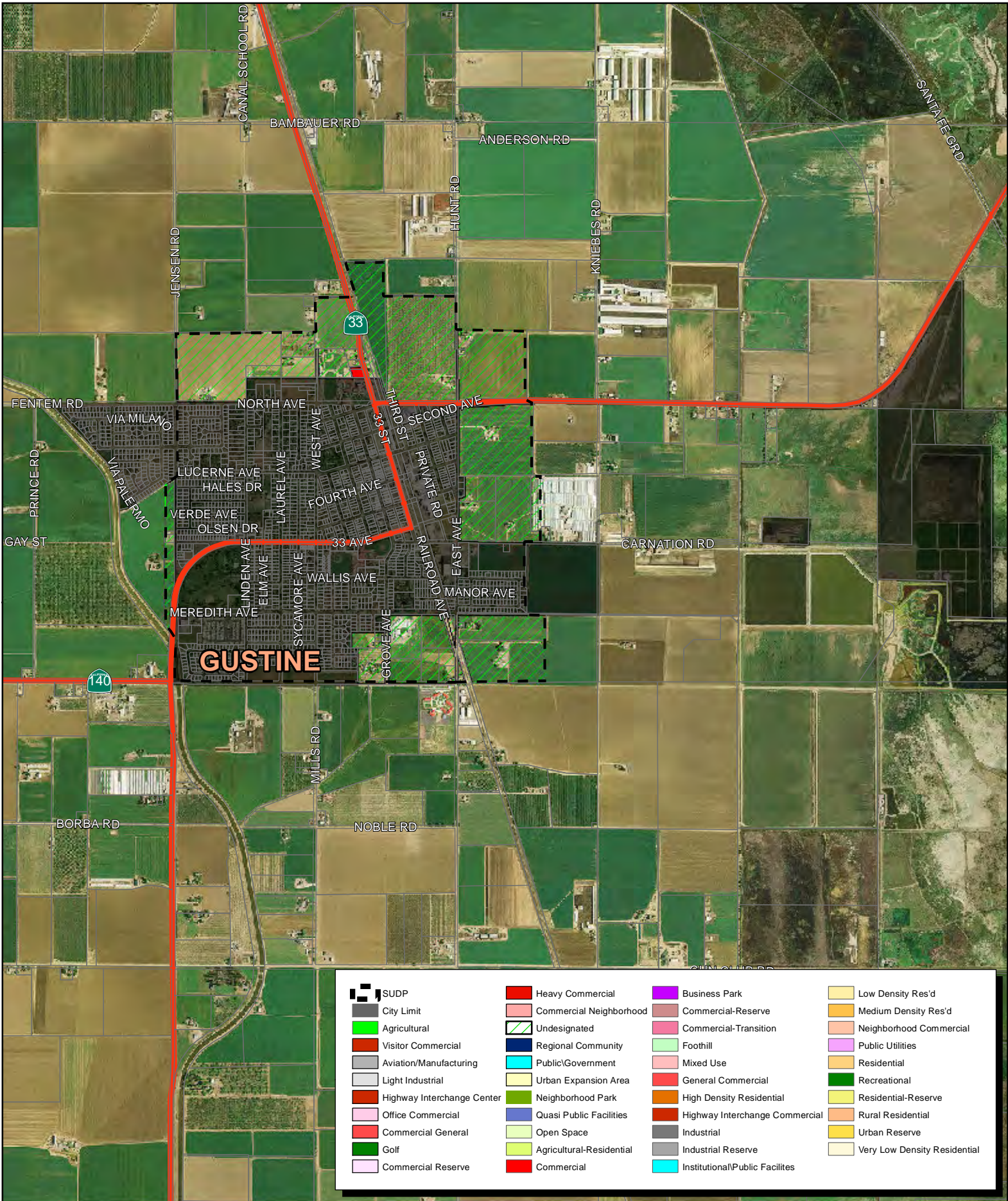
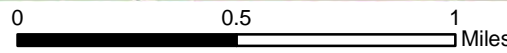


General Plan - Gustine SUDP



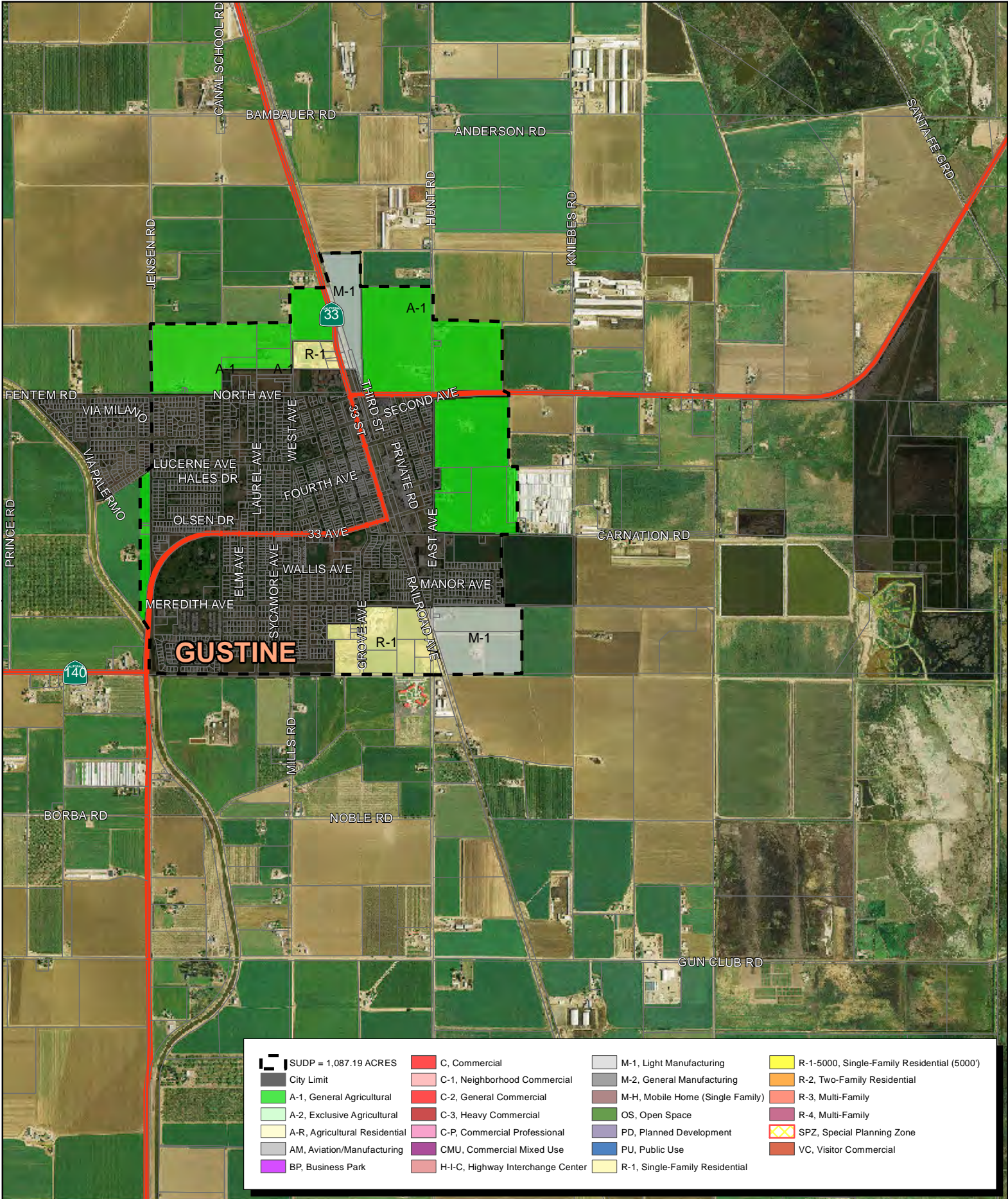
	SUDP		Heavy Commercial		Business Park		Low Density Res'd
	City Limit		Commercial Neighborhood		Commercial-Reserve		Medium Density Res'd
	Agricultural		Undesignated		Commercial-Transition		Neighborhood Commercial
	Visitor Commercial		Regional Community		Foothill		Public Utilities
	Aviation/Manufacturing		Public/Government		Mixed Use		Residential
	Light Industrial		Urban Expansion Area		General Commercial		Recreational
	Highway Interchange Center		Neighborhood Park		High Density Residential		Residential-Reserve
	Office Commercial		Quasi Public Facilities		Highway Interchange Commercial		Rural Residential
	Commercial General		Open Space		Industrial		Urban Reserve
	Golf		Agricultural-Residential		Industrial Reserve		Very Low Density Residential
	Commercial Reserve		Commercial		Institutional/Public Facilities		



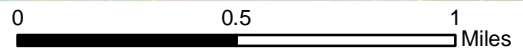
PRODUCED BY MERCED COUNTY PLANNING AND COMMUNITY DEVELOPMENT DEPARTMENT
 Disclaimer: The information displayed on this map is for reference purposes only. Any questions regarding this map should be directed to the Merced County Planning & Community Development Department.



Zoning - Gustine SUDP



SUDP = 1,087.19 ACRES	C, Commercial	M-1, Light Manufacturing	R-1-5000, Single-Family Residential (5000')
City Limit	C-1, Neighborhood Commercial	M-2, General Manufacturing	R-2, Two-Family Residential
A-1, General Agricultural	C-2, General Commercial	M-H, Mobile Home (Single Family)	R-3, Multi-Family
A-2, Exclusive Agricultural	C-3, Heavy Commercial	OS, Open Space	R-4, Multi-Family
A-R, Agricultural Residential	C-P, Commercial Professional	PD, Planned Development	SPZ, Special Planning Zone
AM, Aviation/Manufacturing	CMU, Commercial Mixed Use	PU, Public Use	VC, Visitor Commercial
BP, Business Park	H-I-C, Highway Interchange Center	R-1, Single-Family Residential	



PRODUCED BY MERCED COUNTY PLANNING AND COMMUNITY DEVELOPMENT DEPARTMENT
 Disclaimer: The information displayed on this map is for reference purposes only. Any questions regarding this map should be directed to the Merced County Planning & Community Development Department.

