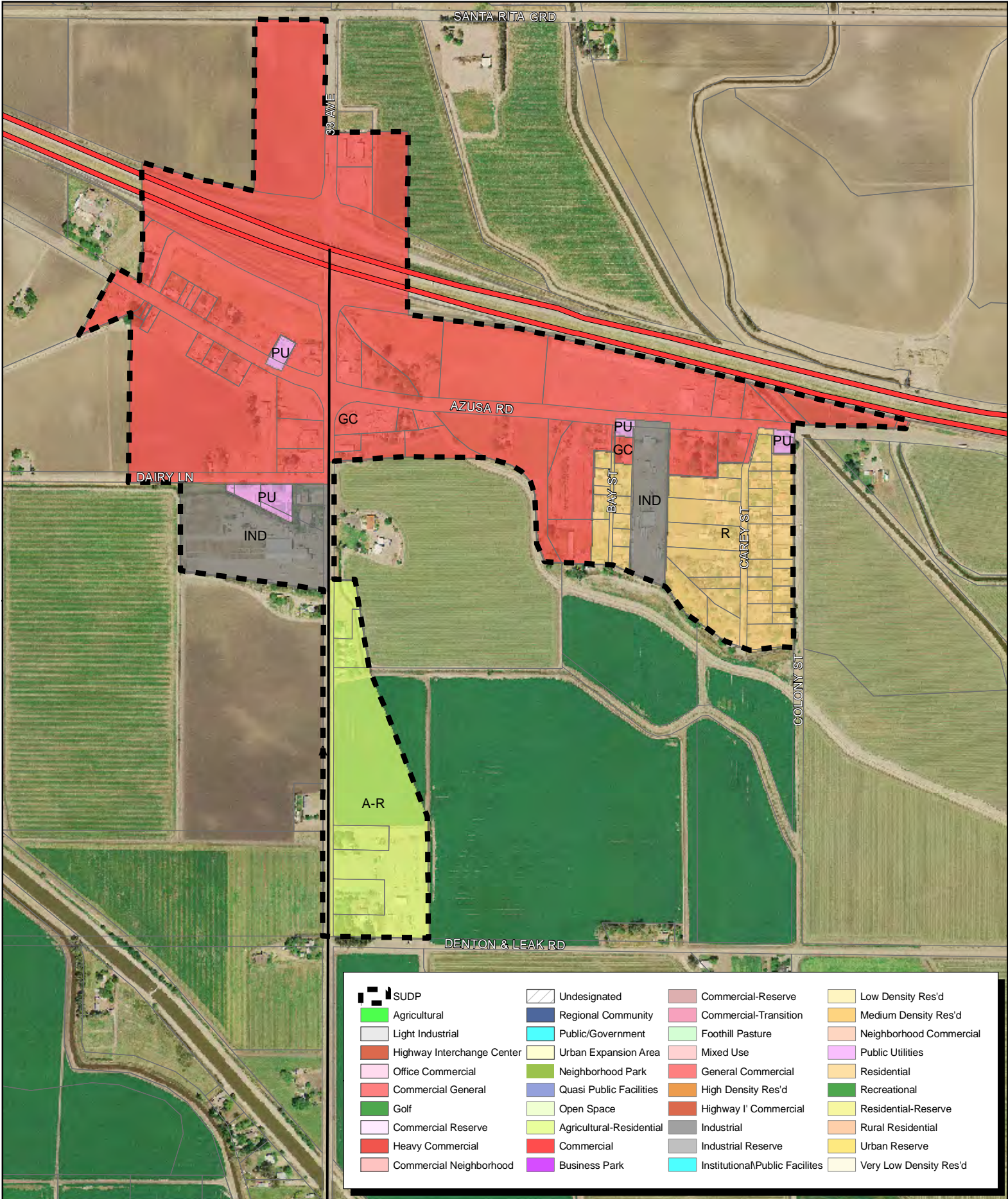


General Plan - Community of Dos Palos Y



| | | | |
|----------------------------|--------------------------|---------------------------------|-------------------------|
| SUDP | Undesignated | Commercial-Reserve | Low Density Res'd |
| Agricultural | Regional Community | Commercial-Transition | Medium Density Res'd |
| Light Industrial | Public/Government | Foothill Pasture | Neighborhood Commercial |
| Highway Interchange Center | Urban Expansion Area | Mixed Use | Public Utilities |
| Office Commercial | Neighborhood Park | General Commercial | Residential |
| Commercial General | Quasi Public Facilities | High Density Res'd | Recreational |
| Golf | Open Space | Highway I' Commercial | Residential-Reserve |
| Commercial Reserve | Agricultural-Residential | Industrial | Rural Residential |
| Heavy Commercial | Commercial | Industrial Reserve | Urban Reserve |
| Commercial Neighborhood | Business Park | Institutional/Public Facilities | Very Low Density Res'd |

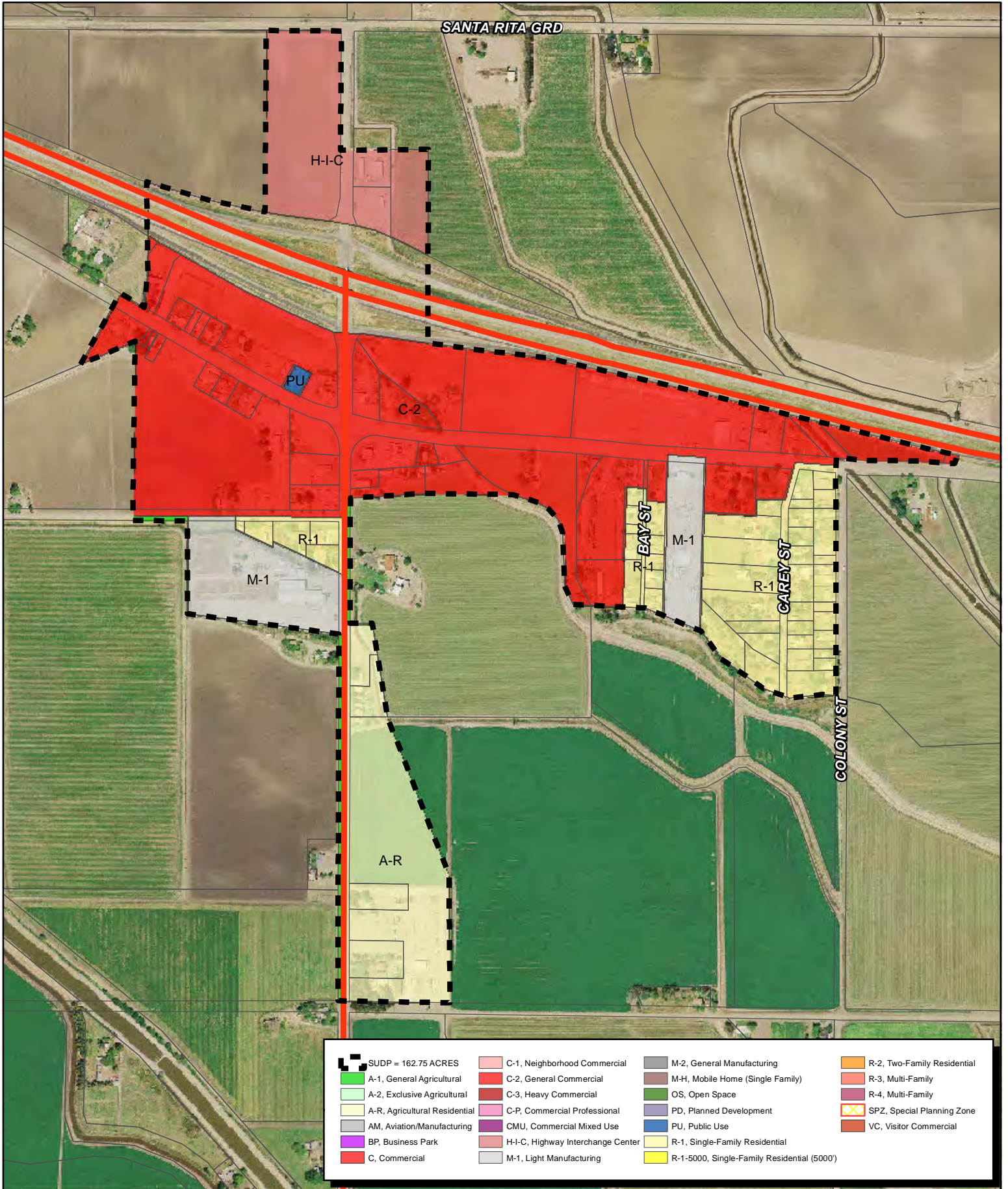


0 1,000 2,000 Feet

PRODUCED BY MERCED COUNTY PLANNING AND COMMUNITY DEVELOPMENT DEPARTMENT
 Disclaimer: The information displayed on this map is for reference purposes only. Any questions regarding this map should be directed to the Merced County Planning & Community Development Department.



Zoning - Community of Dos Palos Y



0 1,000 2,000 Feet

PRODUCED BY MERCED COUNTY PLANNING AND COMMUNITY DEVELOPMENT DEPARTMENT
 Disclaimer: The information displayed on this map is for reference purposes only. Any questions regarding this map should be directed to the Merced County Planning & Community Development Department.