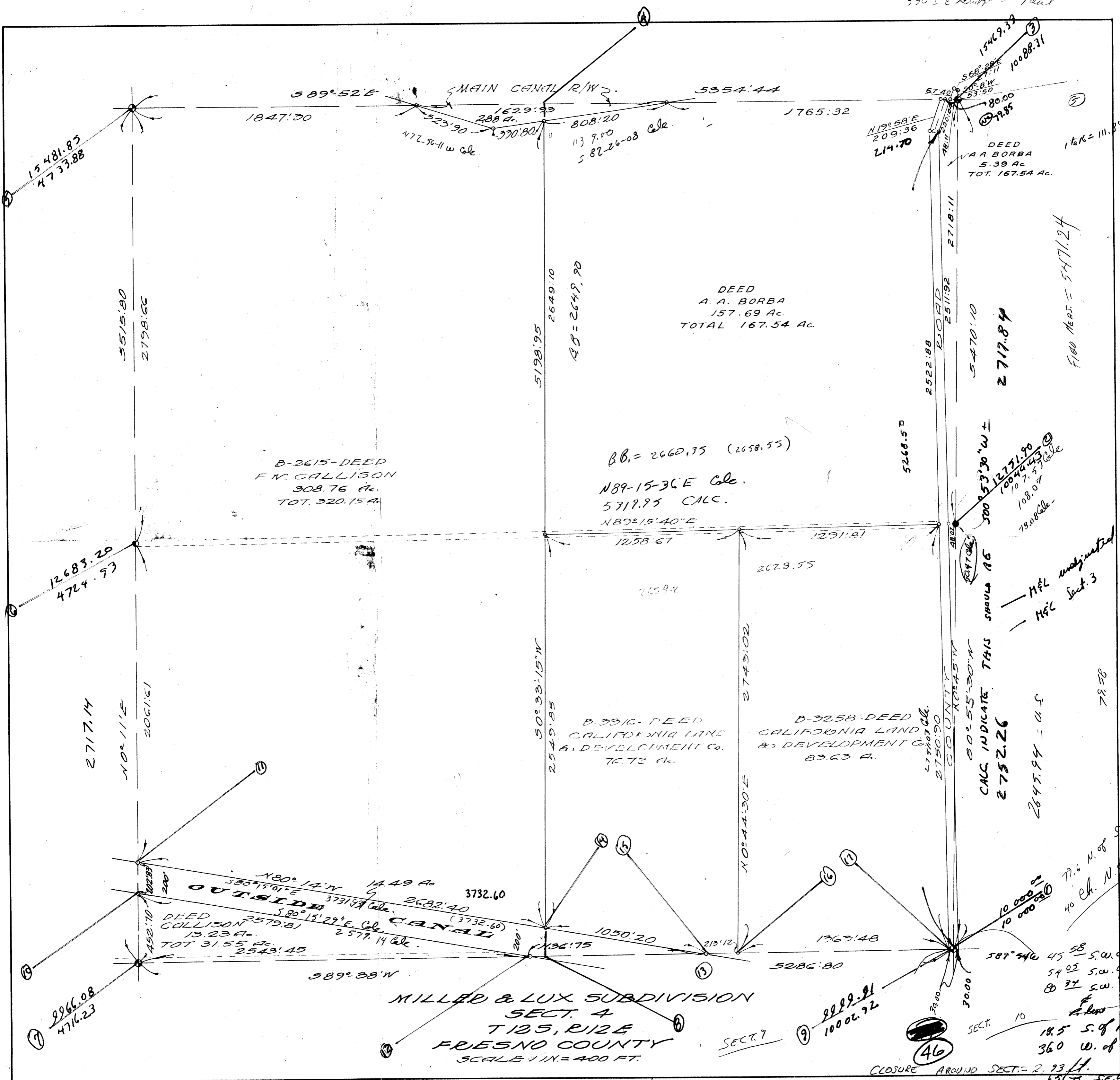


550' E. A. to Paul



Tap # "18"

589°52'E 1847.30
 5354.44 1765.32
 MAIN CANAL R/W 2
 1629.33 288 A.
 523.90 370.80
 808.20 113 9.00
 582-26-08 Calc.

N19°58'E 209.36
 214.70
 568°28'E 1546.33
 53°50'W 10088.31
 80.00
 79.85
 DEED A.A. BORBA
 5.39 Ac.
 TOT. 167.54 Ac.

DEED
 A.A. BORBA
 157.69 Ac.
 TOTAL 167.54 Ac.

B-2615-DEED
 F.M. CALLISON
 308.76 Ac.
 TOT. 320.75 Ac.

BB. = 2660.35 (2658.55)
 N89-15-36 E Calc.
 5719.95 CALC.
 N89°15'40"E

B-3316-DEED
 CALIFORNIA LAND
 & DEVELOPMENT Co.
 76.73 Ac.

B-3258-DEED
 CALIFORNIA LAND
 & DEVELOPMENT Co.
 83.63 Ac.

MILLED & LUX SUBDIVISION
 SECT. 4
 T12S, R12E
 FRESNO COUNTY
 SCALE 1/4" = 400 FT.

500' 53' 30" W ±
 12771.90
 10044.43
 108.07
 79.08 Calc.

MFL unadj. material
 MFL Sect. 3

CALC. INDICATE THIS SHOULD BE
 2752.26
 2645.94 - a.s.

0 to 0 to 0 to 1 = 500° 53' 40" W 5470.15
 500° 53' 01" W 5470.31
 500° 51' 49" W 5465.26

79.6 N. of S.W. of
 70 Ch. N. of S.W. of

589° 44' W 45 58 S.W. of T.P.
 54 02 S.W. of P.P.
 80 34 S.W. of P.P.

CLOSURE AROUND SECT. 10 = 2.93 ft.
 63.75 S.E. of P.P.
 32.4 E. of P.P.