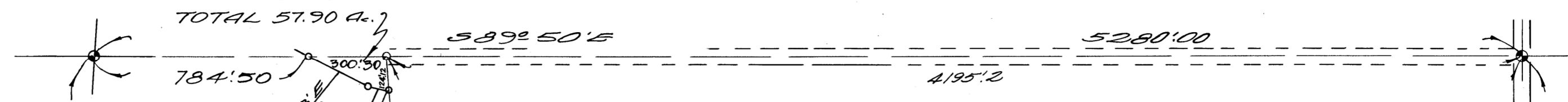
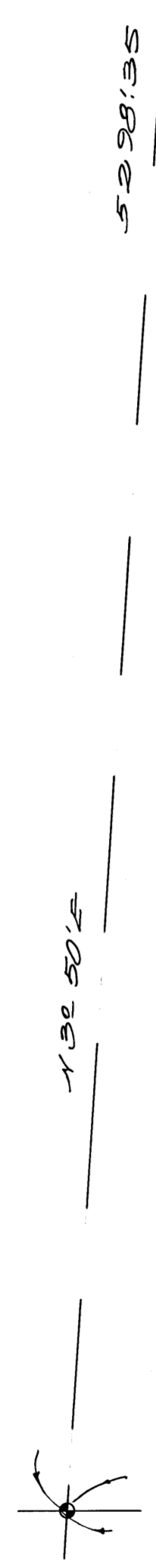


B-3468-DEED
CASELLA & MUZZIO
0.48 A.
TOTAL 57.90 A.



C-106
JESSEN, SAPIRO, et. al.
267.02 A.

B-3531-DEED
CANAL DUCK CLUB, INC.
179.83 A.
TOTAL 348.92 A.



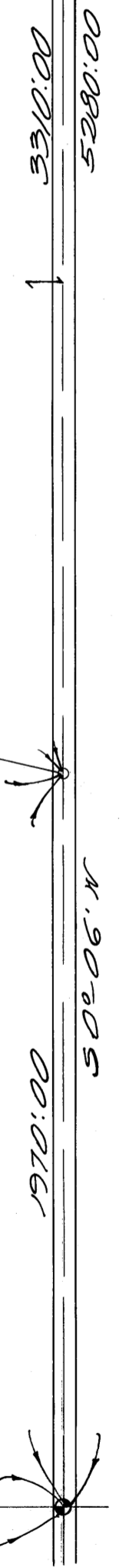
CENALI
N 42° 51' N
2408'12

5180'90

SHIBB
N 15° 5' N
2896'90

576° 58' E
4091'30

B-3447-DEED
F & E. ROBERTS
213.98 A.
TOTAL 357.80 A.



1886'66

N 89° 54' N

3737'54

5624'20

MILLER & LUX SUBDIVISION
SECT. 30
T 11 S, R 12 E
MERCED COUNTY
SCALE 1/4" = 400 FT.