

389° 47' E
2640.10

COLONY BRANCH NO. 9

1800.00

840.10

B-2988 - DEED
VERNIE RAVEN
Ac.
TOT. 149.23 Ac.

B-3072 - DEED
DOMINGO ALVES ESTATE
95.40 Ac.
TOTAL 119.40 Ac.

1584.60

5278.00

N 89° 48' 30" N 2635.80

1555.24

2984.50

1185.15

50° 06' E 838.88

1185.29

5278.95

B-2988 - DEED
F.W. & E.S. BATTEN
Ac.
TOTAL 149.23 Ac.

1456.91

DEED
R.H. DEYO
220.55 Ac.
TOTAL 251.40 Ac.

3317.91

N 0° 11' W

1429.26

N 0° 06' N

S 70° 04' W 892.50

S 82° 00' W 145.00

N 80° 57' W 700.00

S 75° 27' W 310.00

N 88° 06' W 200.00

N 67° 22' W 410.00

S 79° 56' W 120.00

S 60° 00' W 509.50

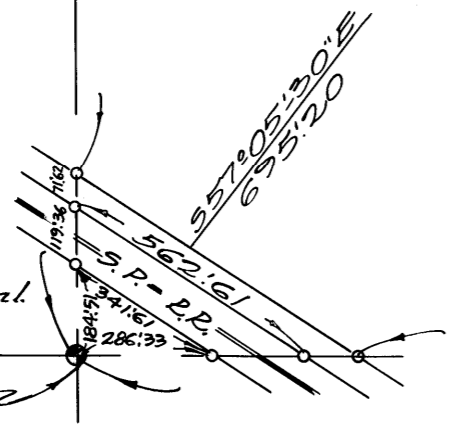
S 89° 52' W 589.10

B-3320 - DEED
G. K. ANTOINE
151.98 Ac.
TOTAL 1117.35 Ac.

2609.35

S 0° 04' E

B-3265
W.J. BUCHSER, et al.
0.61 Ac.
TOT. 315.84 Ac.



2042.94

N 89° 47' 30" N

2637.00

5262.50

MILLER & LUX SUBDIVISION
SECT. 8
T 11 S, R 12 E
MERCED COUNTY
SCALE 1 IN. = 400 FT.