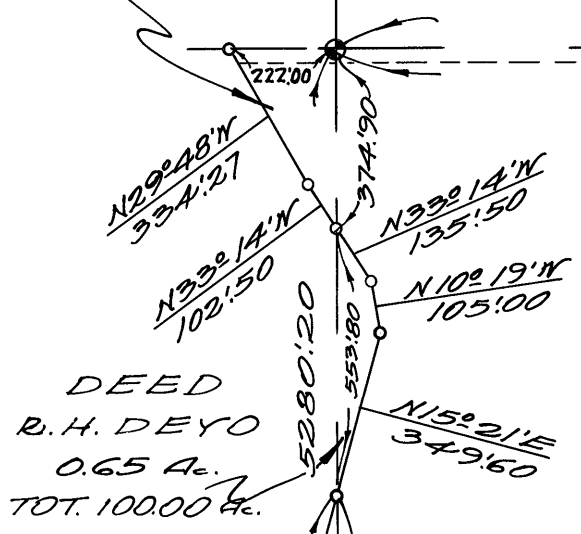


B-2673-DEED
E. & E. STONE
0.98 A.
TOT. 196.94 A.

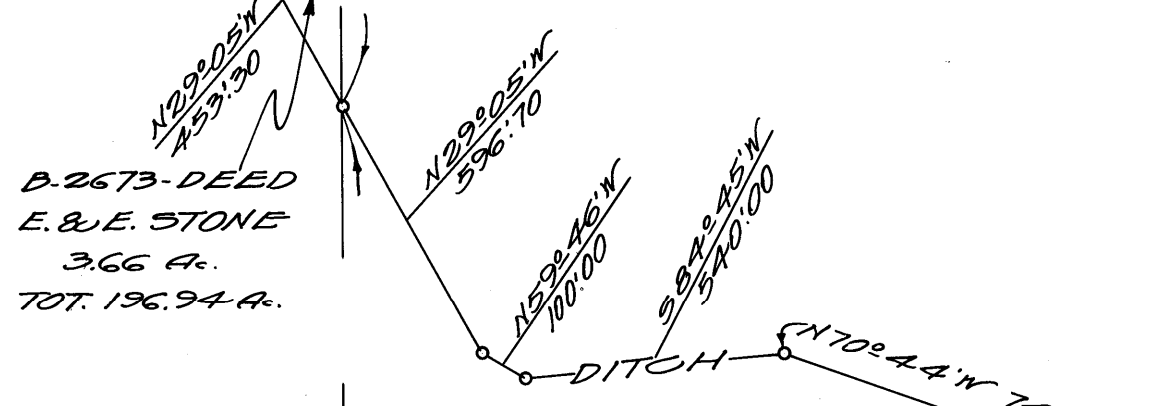


DEED
R. H. DEYO
0.65 A.
TOT. 100.00 A.

B-2673-DEED
E. B. & E. G. STONE
192.30 A.
TOTAL 196.94 A.

B-2319-DEED
D. & M. CARMIGNANI
159.58 A.

B-2673-DEED
E. & E. STONE
3.66 A.
TOT. 196.94 A.



B-2350-DEED
JOHN & MARY COSTA
124.06 A.

B-2723-DEED
M. MAZZINA
79.90 A.

DEED
J. I. DYER
74.76 A.

N0°03'N
3030.50

N89°47'N
2640.10

S89°47'E
2641.30

N265°28'

S0°03'E

N255°10'

S927.00

300 A.

N89°47'N 1322.00

1318.00

N34°58'30"W 307.65

N21°37'N 197.05

N28°48'E 177.81

N49°12'E 216.65

N0°05'N 874.43

5280.20

2552.00
N0°03'N

2640.10
N89°47'N

COLONY BRANCH

1323.17
1316.93

MILLER & LUX SUBDIVISION
SECT. 5
T 11S, R 12E
MERCED COUNTY
SCALE 1 IN. = 400 FT.