

C-164  
F. E. REDFERN & A. B. COMFORT  
240.55 Ac.

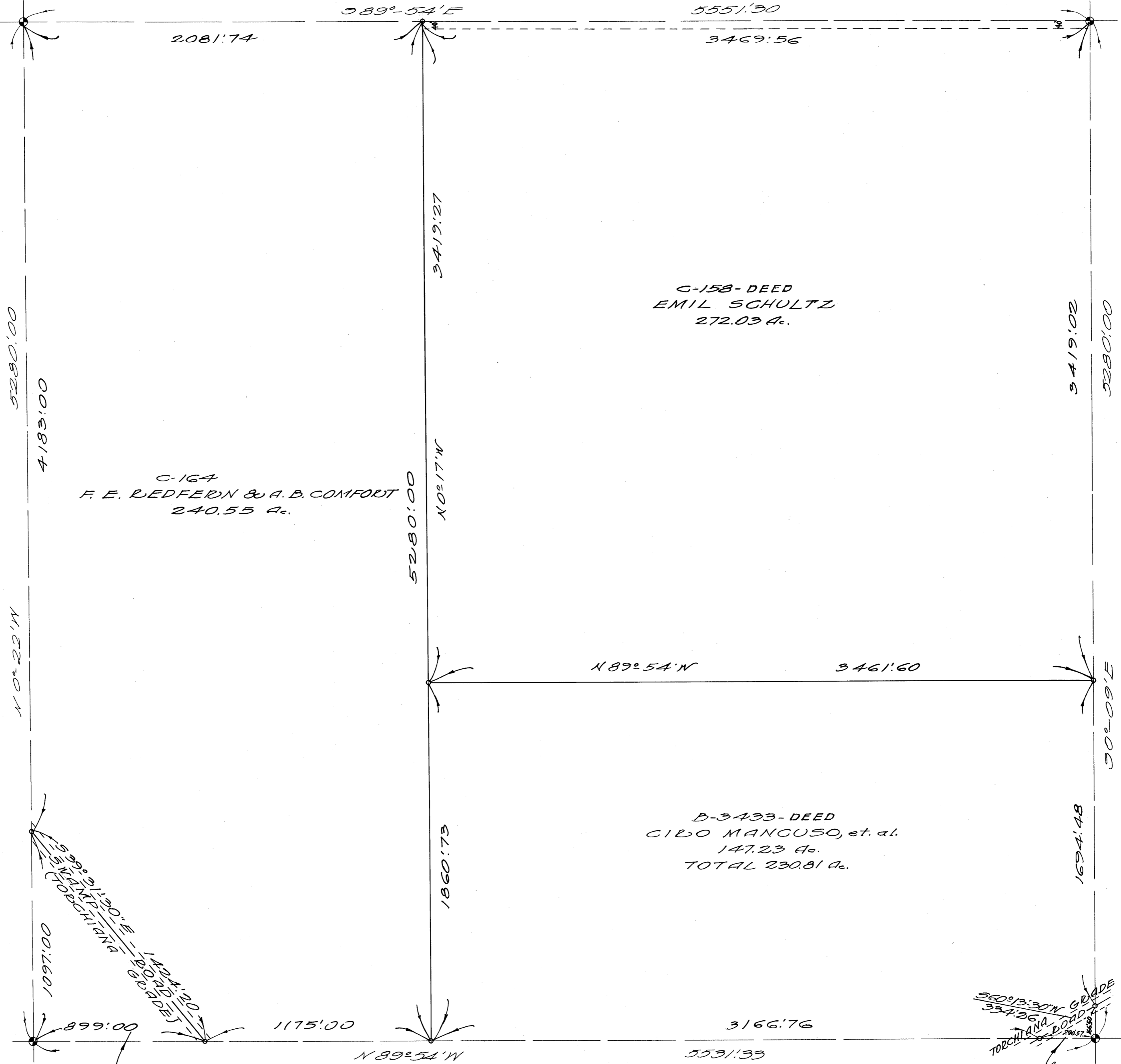
C-158-DEED  
EMIL SCHULTZ  
272.03 Ac.

B-3433-DEED  
CIRO MANGUSO, et. al.  
147.23 Ac.  
TOTAL 230.81 Ac.

B-3449-DEED  
JULIA ELAINE DE CAMPOS  
11.32 Ac.  
TOTAL 977.56 Ac.

MILLER & LUX SUBDIVISION  
SECT. 11  
T11S, R11E  
MERCED COUNTY  
SCALE 1 IN. = 400 FT.

B-3437-DEED  
MESQUITE GUN CLUB, INC.  
0.55 Ac.  
TOTAL 327.80 Ac.



56°13'30" E  
33°26'11" E  
69°52'17" E  
TORCH