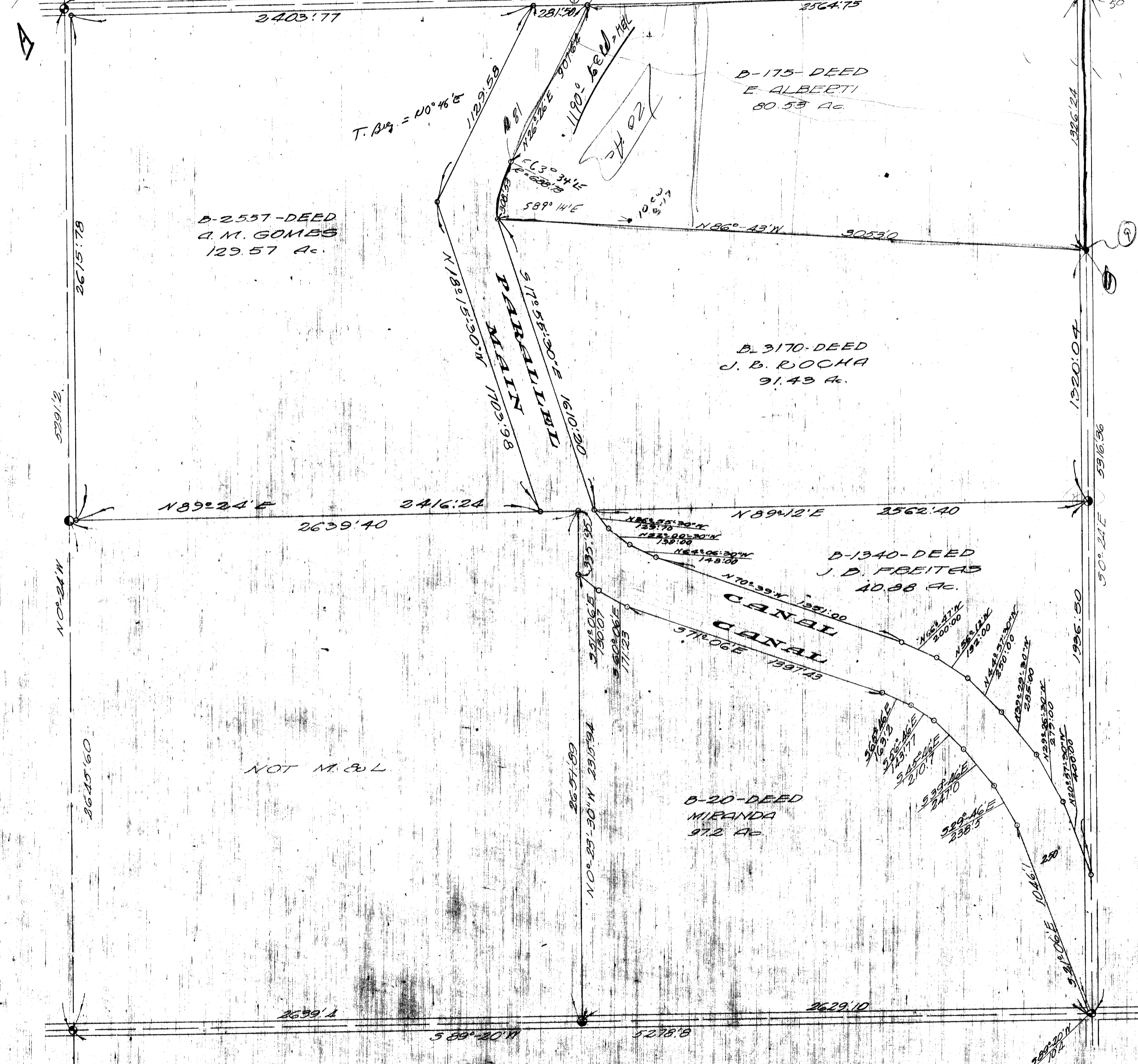


197  
2053  
1952  
4/24

Center of rd 2' lanes  
2607.00 to E Canal = 1919 1st 70' 1/2  
BK 129, p. 29  
2671.6 to E Canal  
4" x 4" post



MILLER & LUX SUBDIVISION  
SECT. 1  
T. 15, R. 10E  
MERCED COUNTY  
SCALE 1" = 100 FT.

7-13-29-250