

N 89° 22' E

5280'00

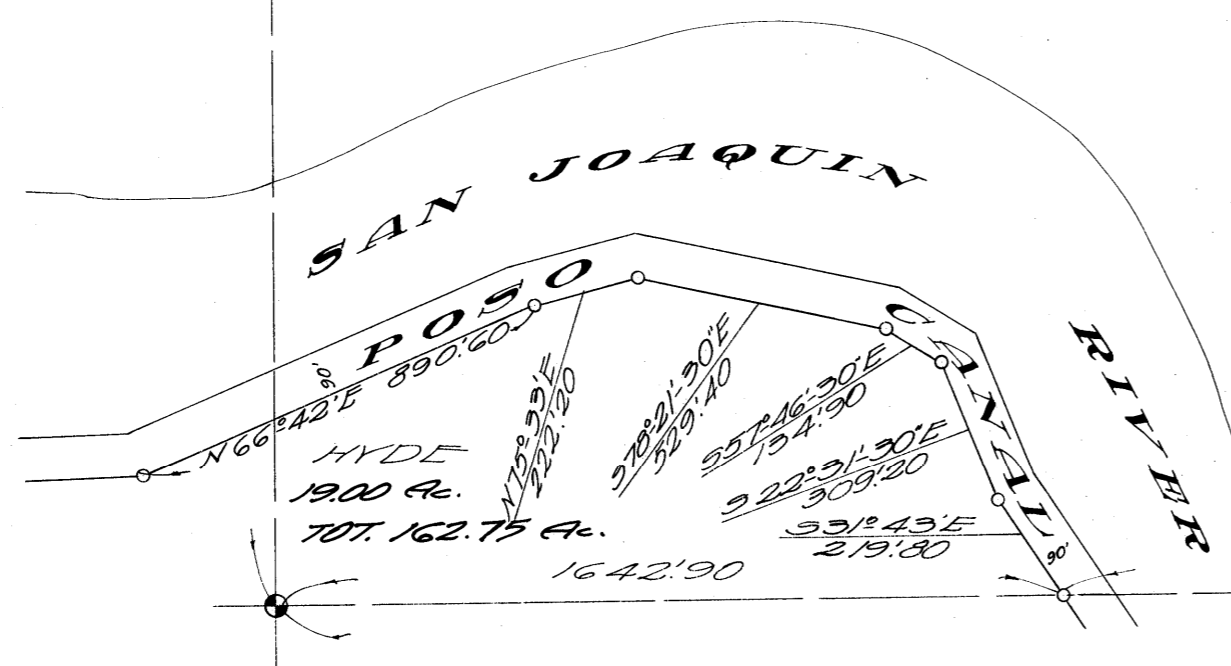
5280'00

5280'00

NOT M & L

102'10' W

50'10' E



SAN JOAQUIN RIVER

POSO

HYDE  
19.00 ac.  
TOT. 162.75 ac.

270°21'50"E  
390'20"

55°26'30"E  
309'20"

23°45'E  
219'80"

1642'90

3637'10

S 89° 22' W

5280'00

MILLER & LUX SUBDIVISION  
SECT. 35  
T 10S, R 13E  
FRESNO & MADERA COUNTIES  
SCALE 1 IN. = 400 FT.