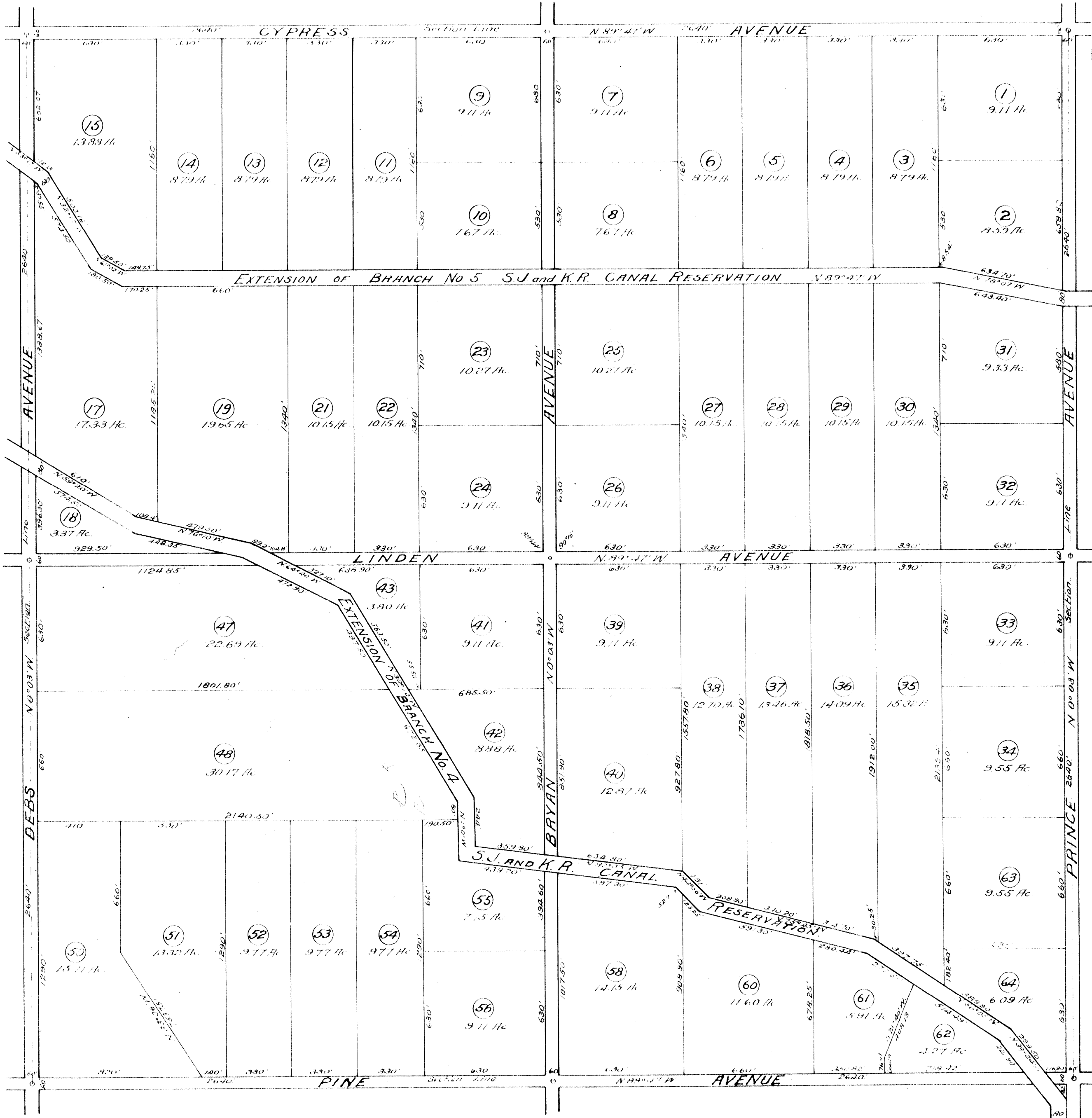


67-9-4

7-6-27



MAP OF MILLER AND LUX SUBDIVISION OF
 SECTION 29,
 T. 10 S. R. 12 E. M.D.M. MERCED COUNTY,
 Surveyed by W.W. Willson, Aug. 1908,
 Platted by Chas. B. Gleaves, Aug. 26 1908.

Scale 400 ft. = 1 Inch.

1007
Issue No. 1.

FILED September 1909.

3-6-27 26

3-6-27