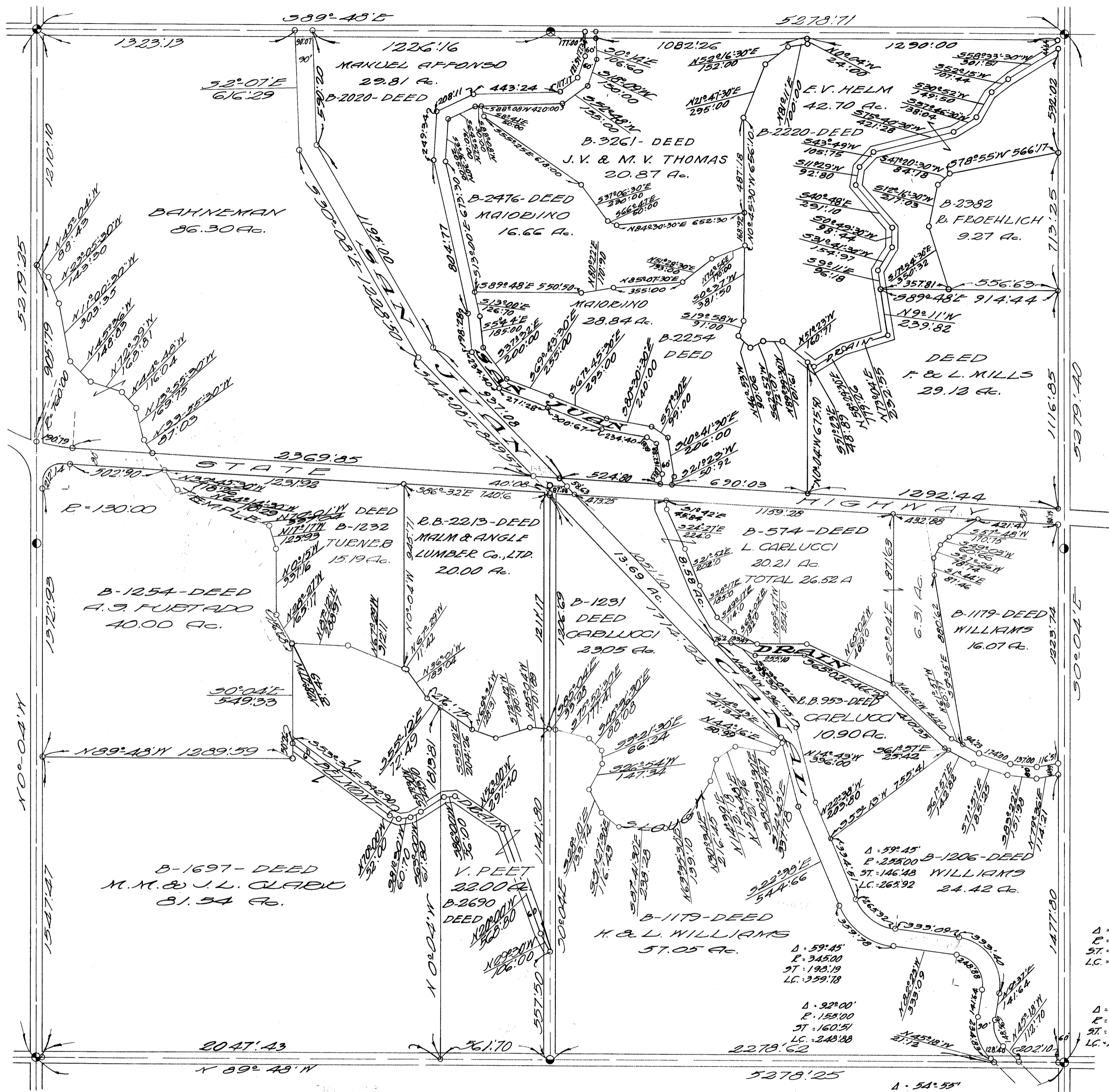


$\Delta = 25^{\circ}54'$
 $E = 800.00$
 $T = 193.95$
 $L = 361.63$



$\Delta = 92^{\circ}00'$
 $E = 245.00$
 $ST = 233.70$
 $LC = 393.40$

$\Delta = 54^{\circ}55'$
 $E = 155.00$
 $ST = 80.54$
 $LC = 148.56$

$\Delta = 59^{\circ}45'$
 $E = 345.00$
 $ST = 190.19$
 $LC = 399.78$

$\Delta = 92^{\circ}00'$
 $E = 155.00$
 $ST = 160.51$
 $LC = 248.88$

$\Delta = 54^{\circ}58'$
 $E = 245.00$
 $ST = 127.31$
 $LC = 294.89$

MILLER & LUX SUBDIVISION
SECT. 23
T 10S, R 12E
MERCED COUNTY
 SCALE 1"=400 FT.