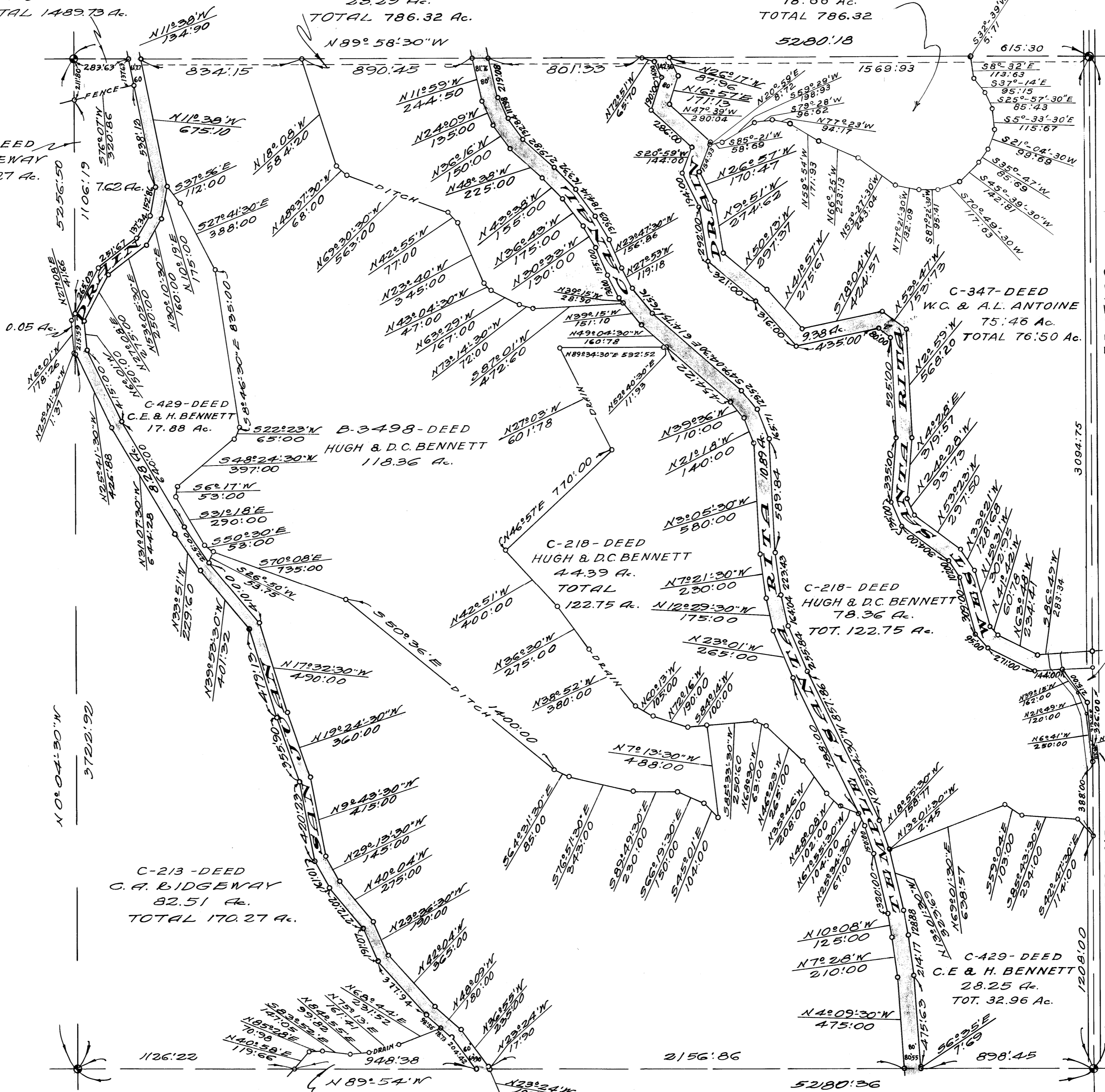


B-3049- DEED
C. A. RIDGEWAY
1.20 Ac.
TOTAL 1489.73 Ac.

C-234-
S. & C. H. THOMAS
23.29 Ac.
TOTAL 786.32 Ac.

C-234- DEED
S. & C. H. THOMAS
18.66 Ac.
TOTAL 786.32

C-213- DEED
C. A. RIDGEWAY
TOT. 170.27 Ac.



N 0° 04' 30" W
3720.92

5265.80

3094.75

5004.30

1208.00

MILLER & LUX SUBDIVISION
SECT. 3
T 10 S, R 12 E
MERCED COUNTY
SCALE 1 IN. = 400 FT.

2.47 Ac.