

C-255-DEED
M. D. ESCANO
0.03 A.
TOT. 249.89 Ac.

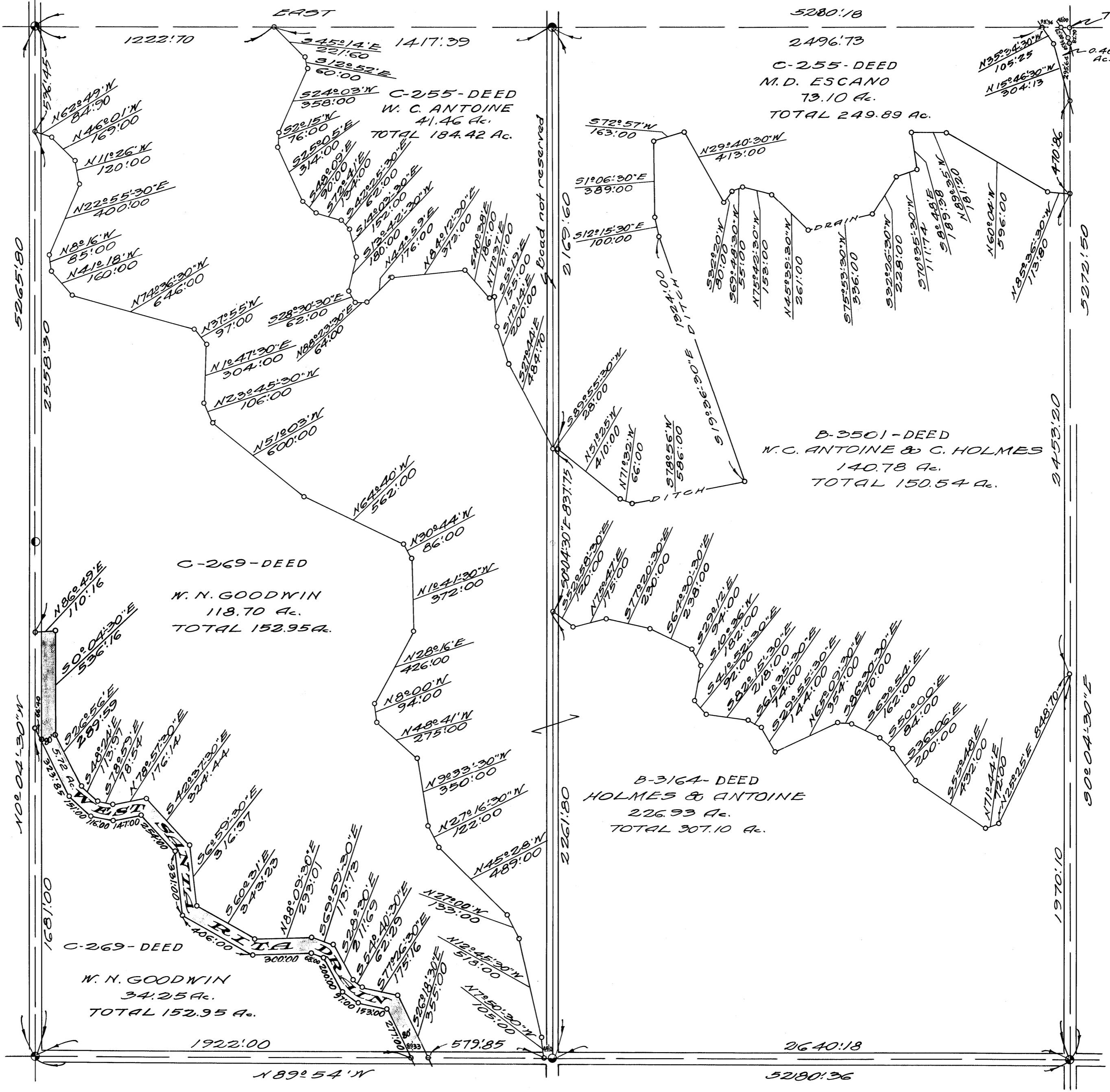
2496.73
C-255-DEED
M. D. ESCANO
73.10 Ac.
TOTAL 249.89 Ac.

B-3501-DEED
W. C. ANTOINE & C. HOLMES
140.78 Ac.
TOTAL 150.54 Ac.

B-3164-DEED
HOLMES & ANTOINE
226.33 Ac.
TOTAL 307.10 Ac.

C-269-DEED
W. N. GOODWIN
118.70 Ac.
TOTAL 152.95 Ac.

C-269-DEED
W. N. GOODWIN
34.25 Ac.
TOTAL 152.95 Ac.



MILLER & LUX SUBDIVISION
SECT. 2
T 10 S, R 12 E
MERCED COUNTY
SCALE 1/4\" = 400 FT.