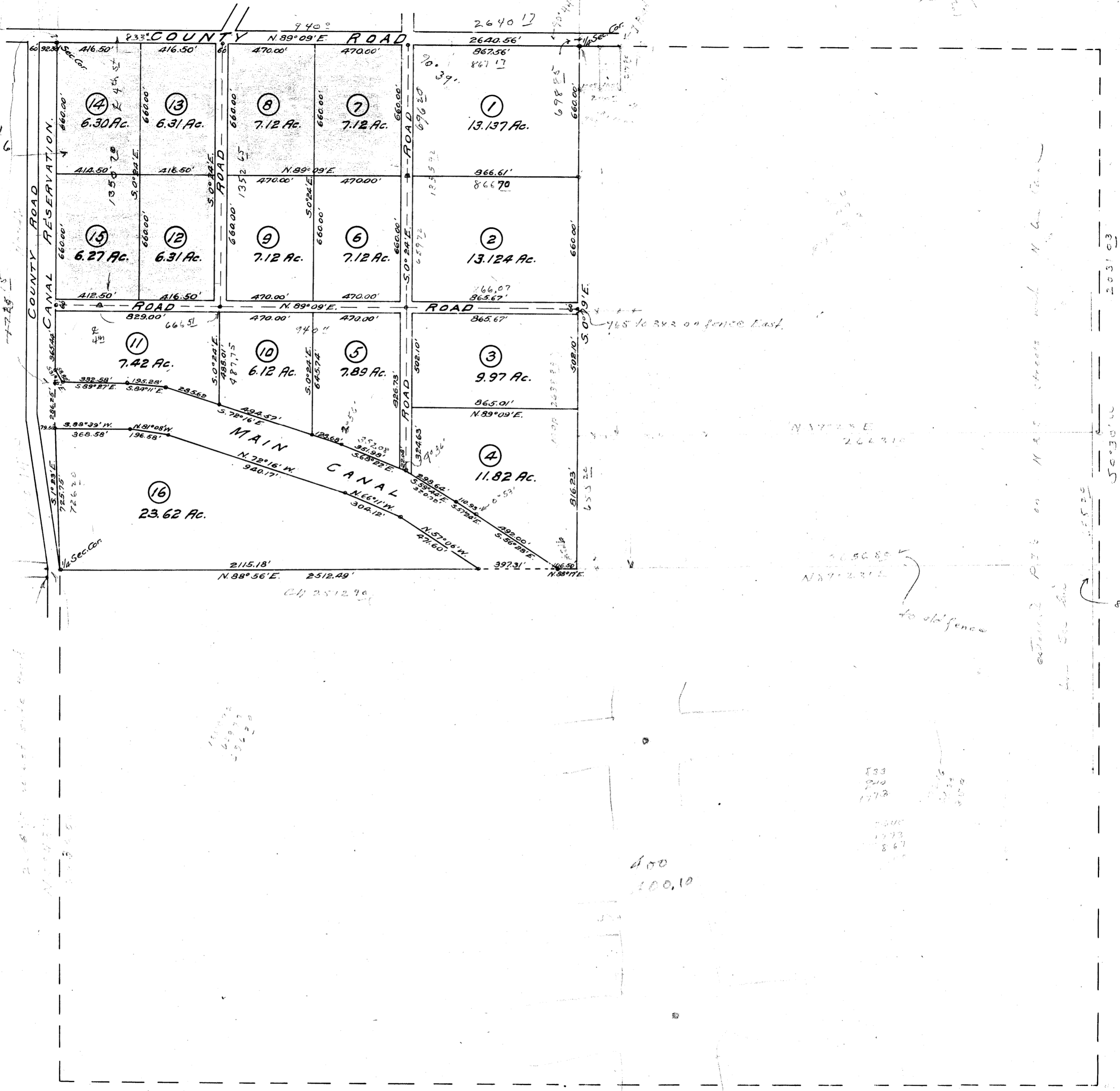


Lot 5-7-8-12-13-14-15
Miller and Lux Subd
Filed Jan 6 - 1916

1715.14
4728.15

2.81' wind side road



MAP OF MILLER AND LUX SUBDIVISION OF SECTION 23, T. 10 S. R. 10 E. M.D.M. MERCED COUNTY.
 Surveyed by H. Wanzer, April 1900.
 Platted by Chas. B. Gleaves, Aug. 1909.

Scale 400ft. = 1 Inch.

1037
Issue No. 1.

File
copy

1197
12
30

2031.03

7100.05

555.22

88°45'

833
910
1772

1005
1073
867

400
100.10

N 89° 09' E
2640.56'

N 89° 09' E
2640.56'

to old fence

extending 2 ft. on N side streets and N. 60' (canal)

765 to 2nd on fence East.

2640.17

2640.56'

867.56'

867.17'

13.137 Ac.

866.61'

866.70'

13.124 Ac.

865.07'

865.67'

9.97 Ac.

865.01'

N 89° 09' E.

11.82 Ac.

865.01'

N 89° 09' E.

7.89 Ac.

6.12 Ac.

7.42 Ac.

23.62 Ac.

2115.18'

N 88° 56' E.

2512.49'

397.31'

N 88° 17' E.

304.12'

N 57° 10' W.

471.60'

S 56° 28' E.

422.00'

110.89'

6.53'

116.89'

357.08'

341.99'

563.92 E.

285.64'

S 59° 42' E.

326.02'

324.63'

502.10'

502.10'

502.10'

502.10'

502.10'

502.10'

502.10'