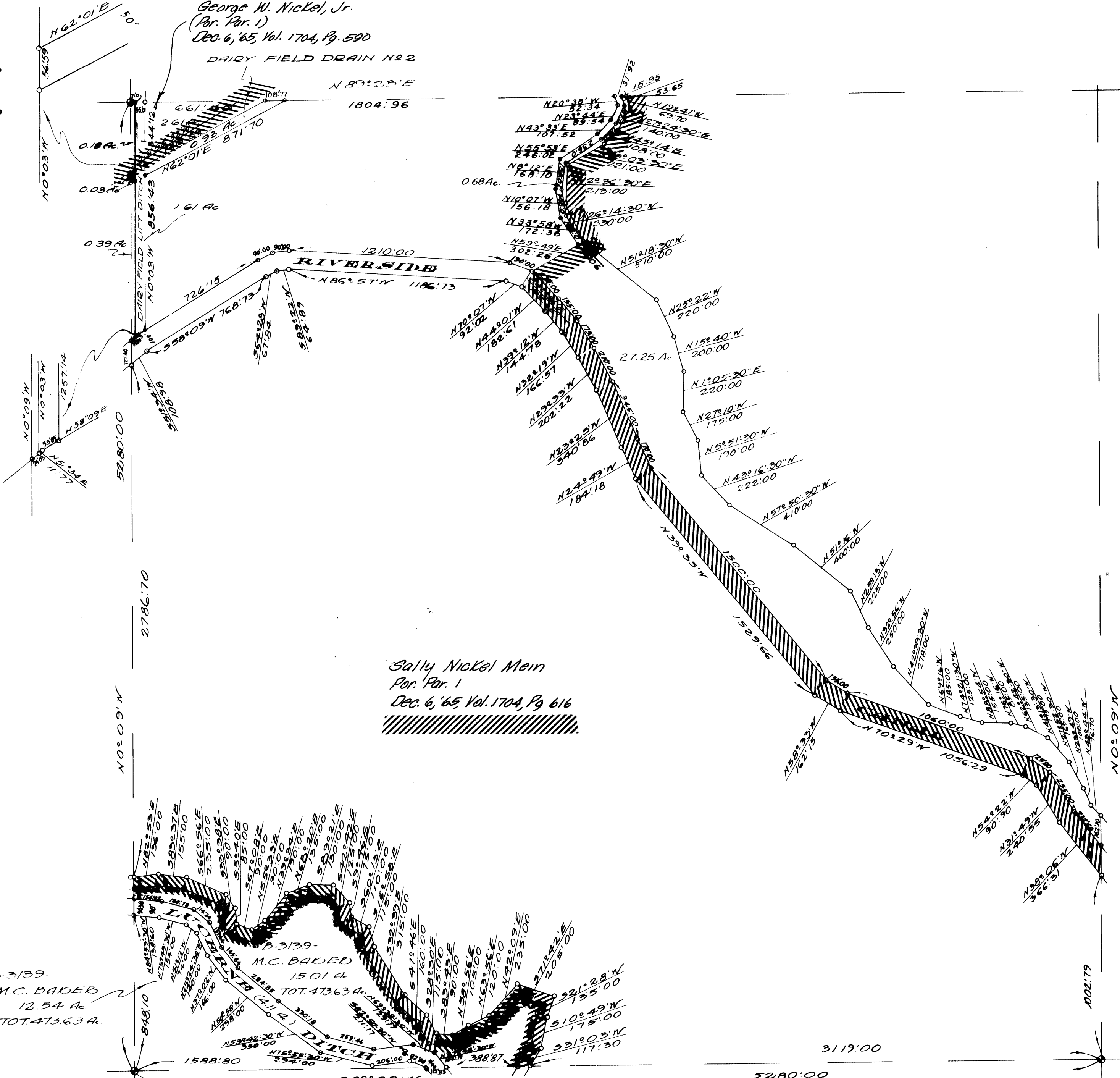


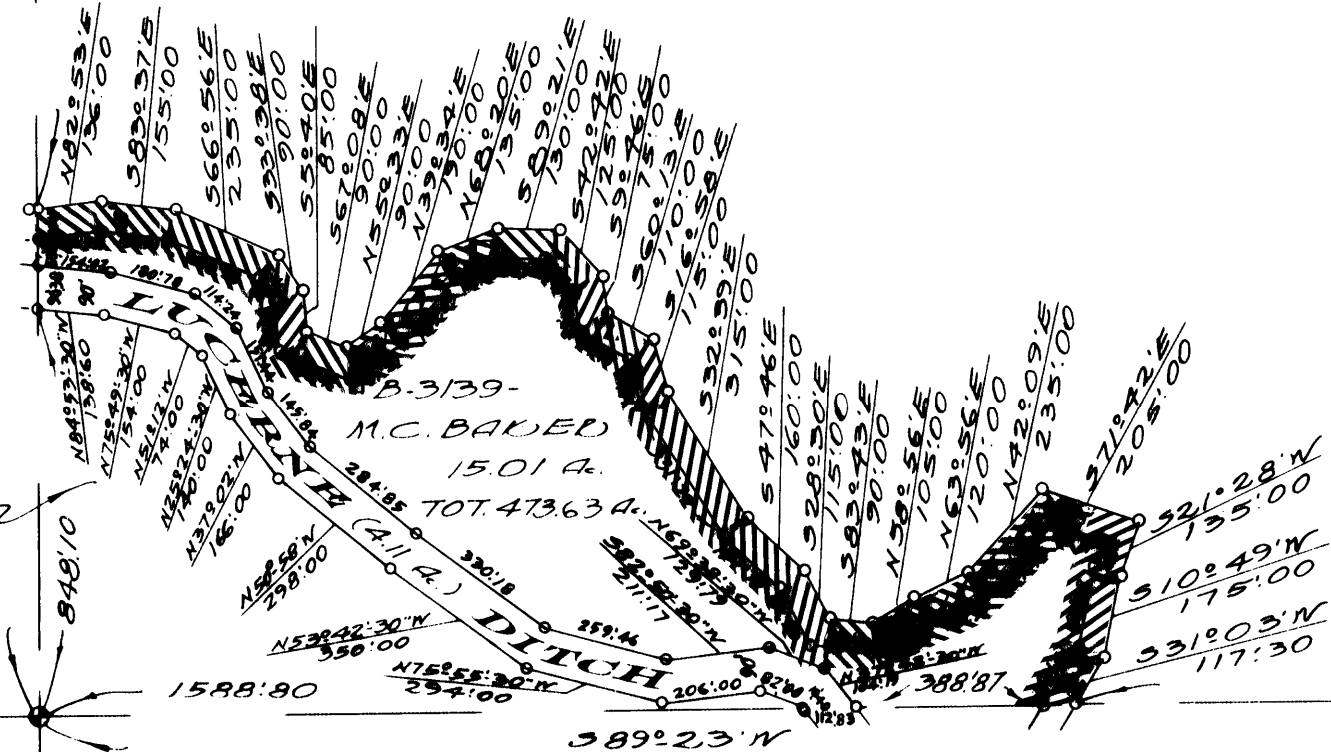
N0°09'N 867.36 56.54 383.130
862.93 372.72

George W. Nickel, Jr.
(Par. Par. 1)
Dec. 6, '65, Vol. 1704, Pg. 590
DAIRY FIELD DRAIN N22



Sally Nickel Mein
Par. Par. 1
Dec. 6, '65 Vol. 1704, Pg. 616

B-3139-
M.C. BAKER
12.54 A.
TOT. 473.63 A.



MILLER & LUX SUBDIVISION
SECT. 31
T 95, R 15E
MERCED COUNTY
SCALE 1 IN = 400 FT.