

N 89° 56' 30" E

5280' 00

5290' 00

5290' 00

B-3049 - DEED
 C. A. RIDGEWAY
 407.22 Ac.
 TOTAL 1489.73 Ac.

Mary Nickel James
 Dec. 6, '65 Vol. 1704, Pg. 622

Nancy B. Moore Guarvland
 Dec. 6, '65 Vol. 1704, Pg. 604.
 Dec. 6, '65 Vol. 1704, Pg. 610

N 0° 2' 4' 30" E

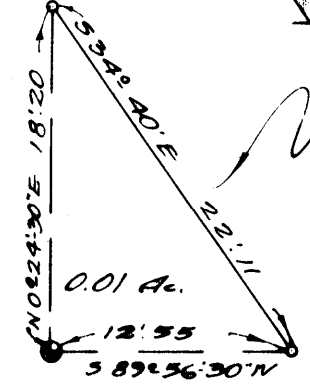
4011' 50

S 0° 2' 7' 30" N

1158' 45

3807' 68

5276' 60



MILLER & LUX SUBDIVISION
 SECT. 32
 T95, R12E
 MECKER COUNTY
 SCALE 1 IN. = 400 FT.