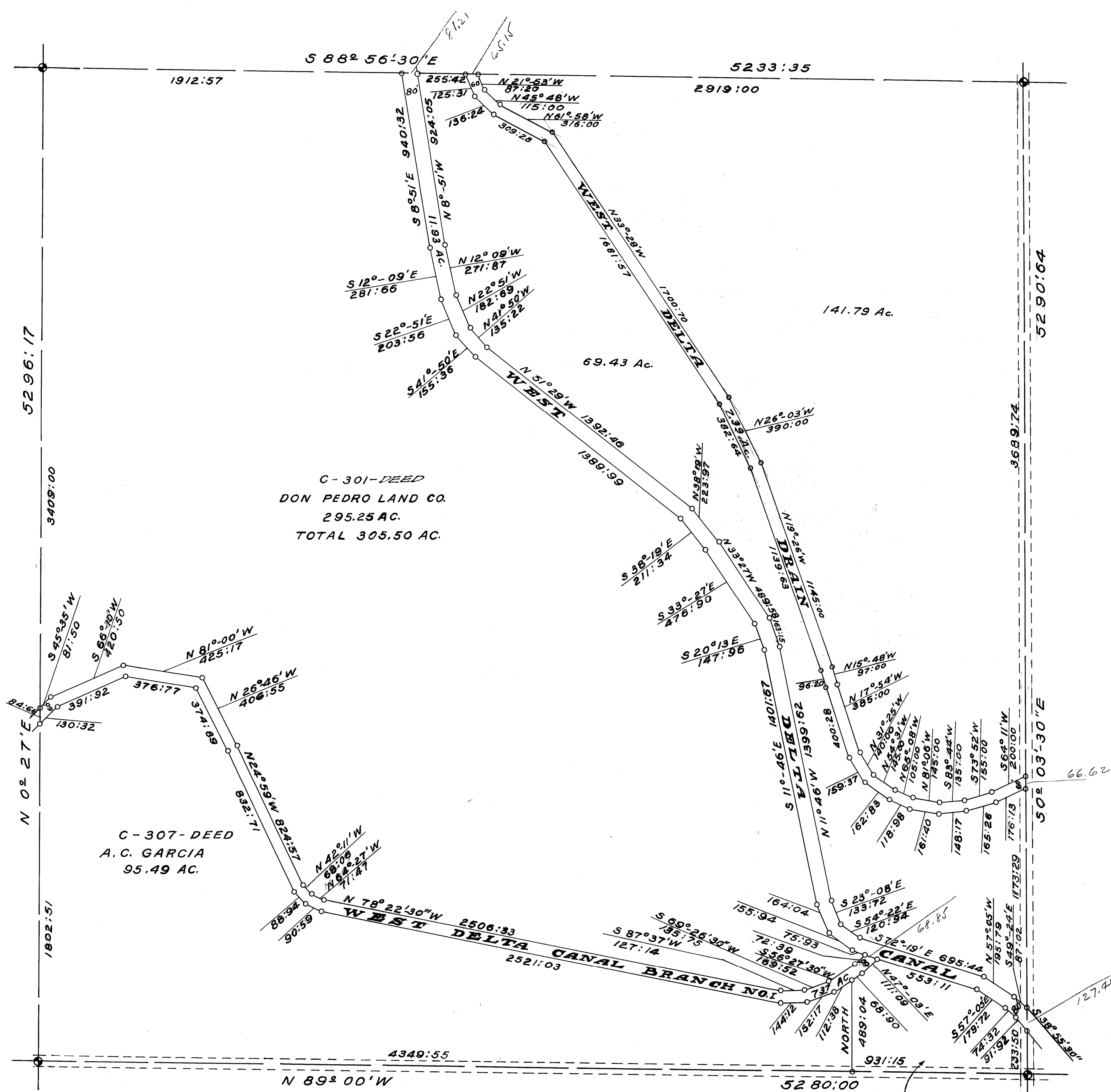


Sect. averages O.K.



C-301-DEED  
DON PEDRO LAND CO.  
295.25 AC.  
TOTAL 305.50 AC.

C-307-DEED  
A.C. GARCIA  
95.49 AC.

C-301-DEED  
DON PEDRO LAND CO.  
10.25 AC.  
TOTAL 305.50 AC.

MILLER & LUX SUBDIVISION  
SECT. 34  
T9 S, R11 E  
MEIGS COUNTY  
SCALE 1 IN = 400 FT.