

Amy Bowles Lawrence
 (Per. Par. 2)
 Dec. 6, '65, Vol. 1704, Pg. 582

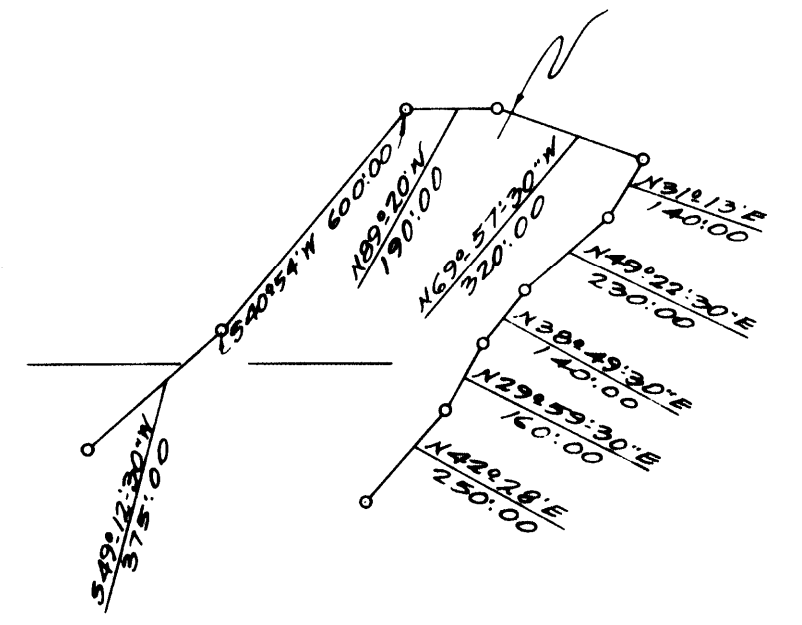
⊕ River Large
 Bearings & distances shown
 Top of River Bank
 See deed for bearings & distances
 38 Acs. in River Bank

B-3515-
 L.C. & H.B. WOLFSEN
 11.93 A.
 TOTAL 1856.58 A.

B-3515
 L.C. & H.B. WOLFSEN
 56.57 A.
 TOTAL 1856.58 A.

MILLER & LUX SUBDIVISION
 SECT. 10
 T9S, R11E
 MERCED COUNTY
 SCALE 1 IN. = 400 FT.

B-3515-
 H.B. & L.C. WOLFSEN
 TOTAL 1856.58 A.



B-3515-66