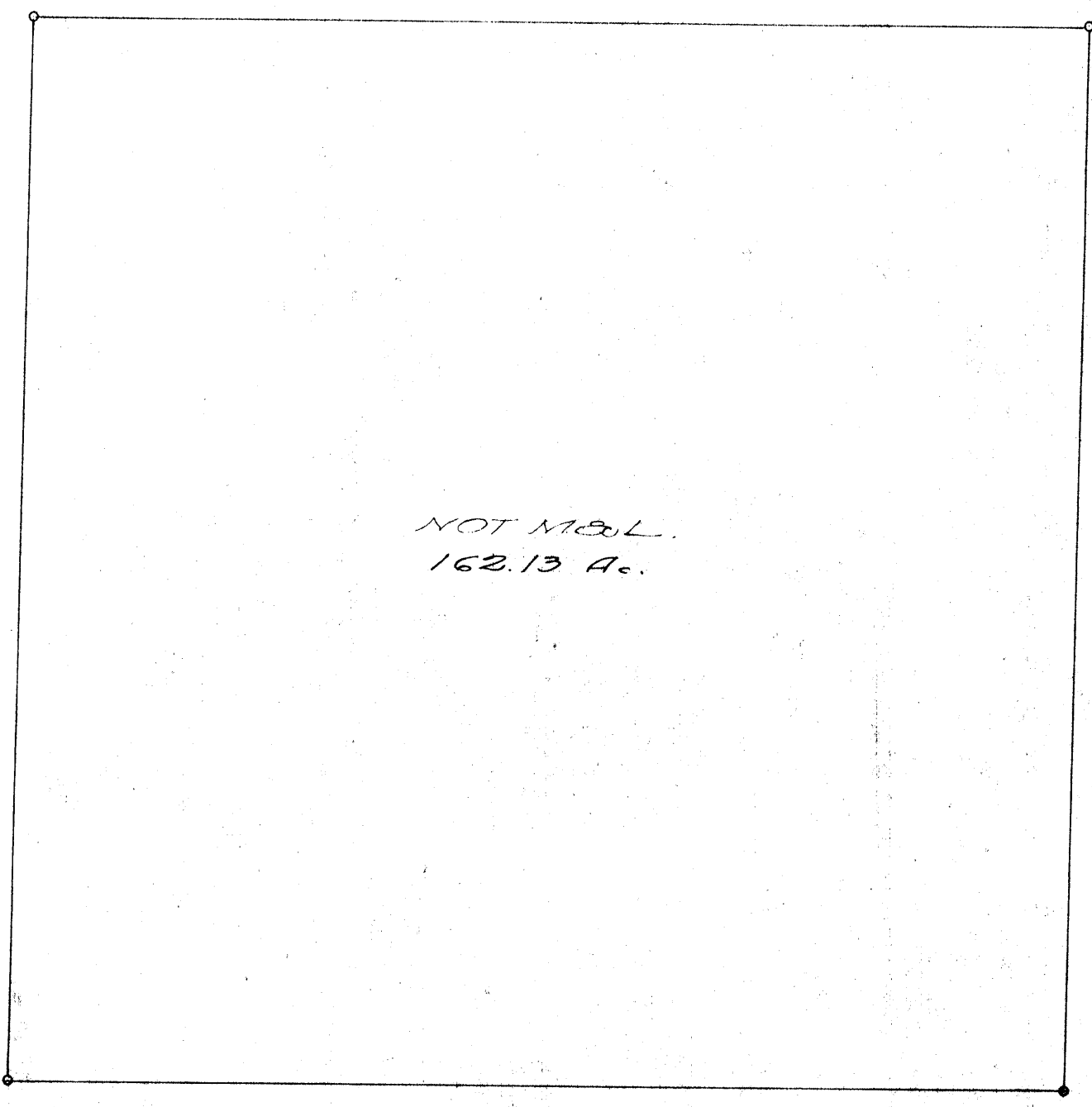


(5336.66' 7 RS 47)
5337.00

N. 1° 34' - 30" E

1144.19'
GILLIAM LAND & CATTLE CO.
301.20 AC.
TOTAL 410.11 AC.
B-1932-DEED
L.B. 1000
DEED
SANTA FE

650.00
USBR MONUMENT
(7 RS 47)



B-2827-DEED
H. MOFFAT COMPANY
397.51 Ac.
TOTAL 7893.41 Ac.

589° 21' E 5307.80
(5307.31' 7RS 47)

MILLER & LUX SUBDIVISION
SECT 9
T 9 S, R 10 E
MERCED COUNTY
SCALE 1 IN = 400 FT.

31 5291.79 2209.14 30

B-1932-DEED
N. De CARTER ET
80.35 Ac.
TOT. 781.57 Ac.

N 7° 34' W
160.65
56° 21' E
163.43
30° 19' W
186.23
37° 55' W
301.89
39° 10' W
390.34

28 264.84 27
USBR MONUMENT
(7 RS 47)