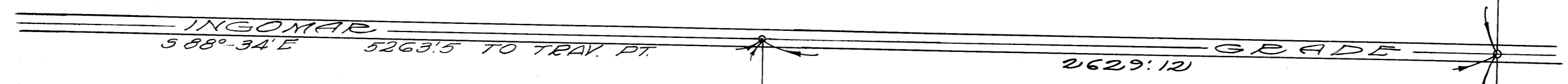
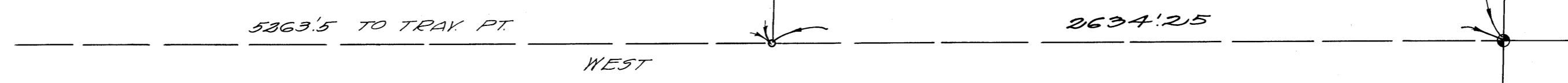


D. B. - 1672 - DEED
SALINAS LAND & CATTLE CO.
206.72 Ac.
TOTAL 1600.36 Ac.



INGOMAR GUN CLUB
TOTAL 443.00 Ac.

D. 2827 - DEED
H. MOFFAT COMPANY
215.58 Ac.
TOTAL 7893.41 Ac.



MILLER & LUX SUBDIVISION
SECT. 1
T 9 S, R 9 E
MERCED COUNTY
SCALE 1 IN. = 400 FT.

3500.96
51° 30' W

1789.60
3535.90
51° 30' W