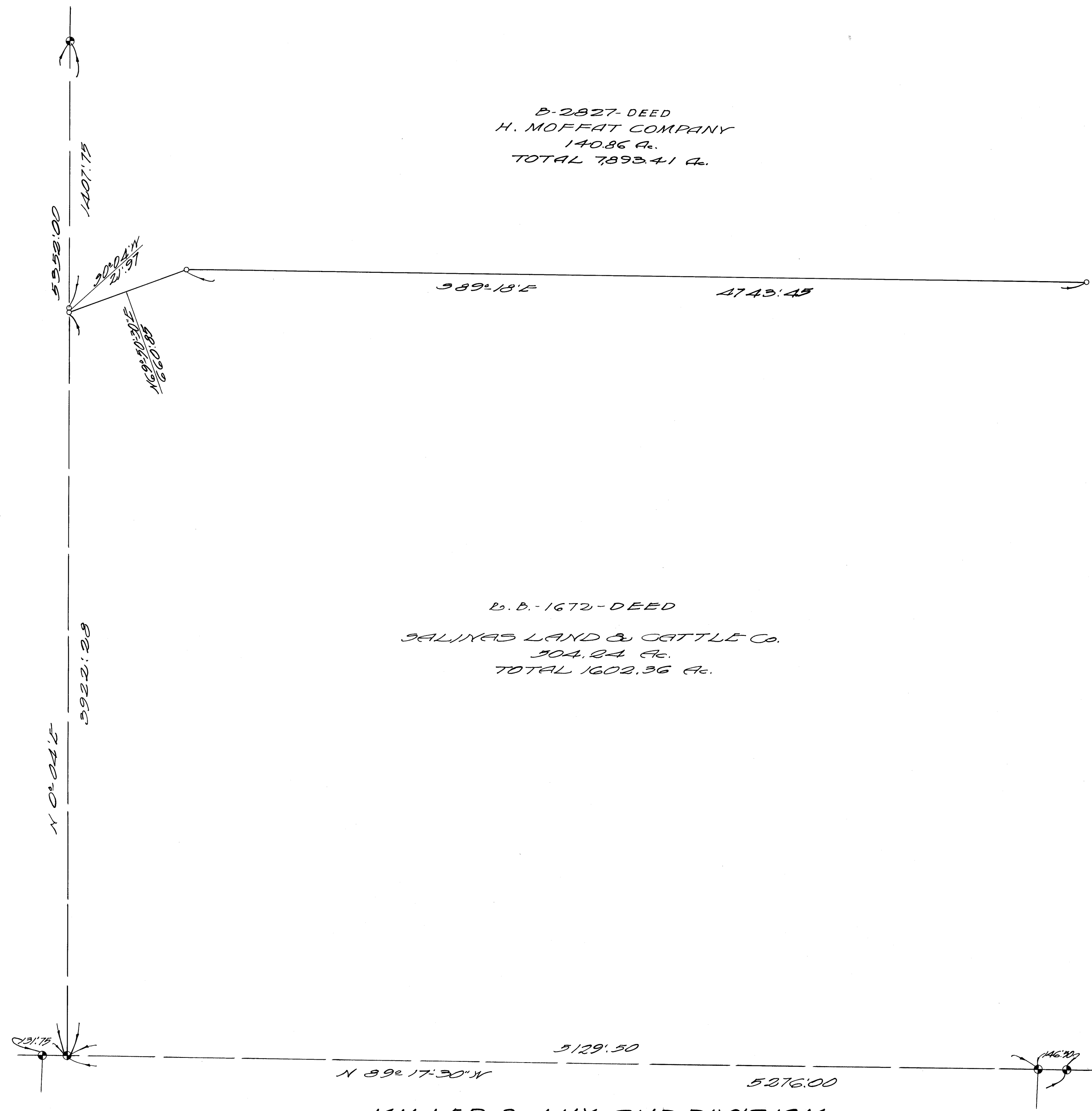


B-2827-DEED
H. MOFFAT COMPANY
140.86 A.
TOTAL 7,893.41 A.

B. B. - 1672 - DEED
SALINAS LAND & CATTLE CO.
304.24 A.
TOTAL 1602.36 A.



MILLER & LUX SUBDIVISION
SECT. 36
T 9 S, R 9 E
MERCED COUNTY
SCALE 1 IN. = 400 FT.