

M & L F.B. 11

July 1927

Section

1199.83

1229.22 (2671.46)

1442.42
1412.42

1439.65
1439.82
N 89° 15' E

5891.11
1362.95

116.80 AC.

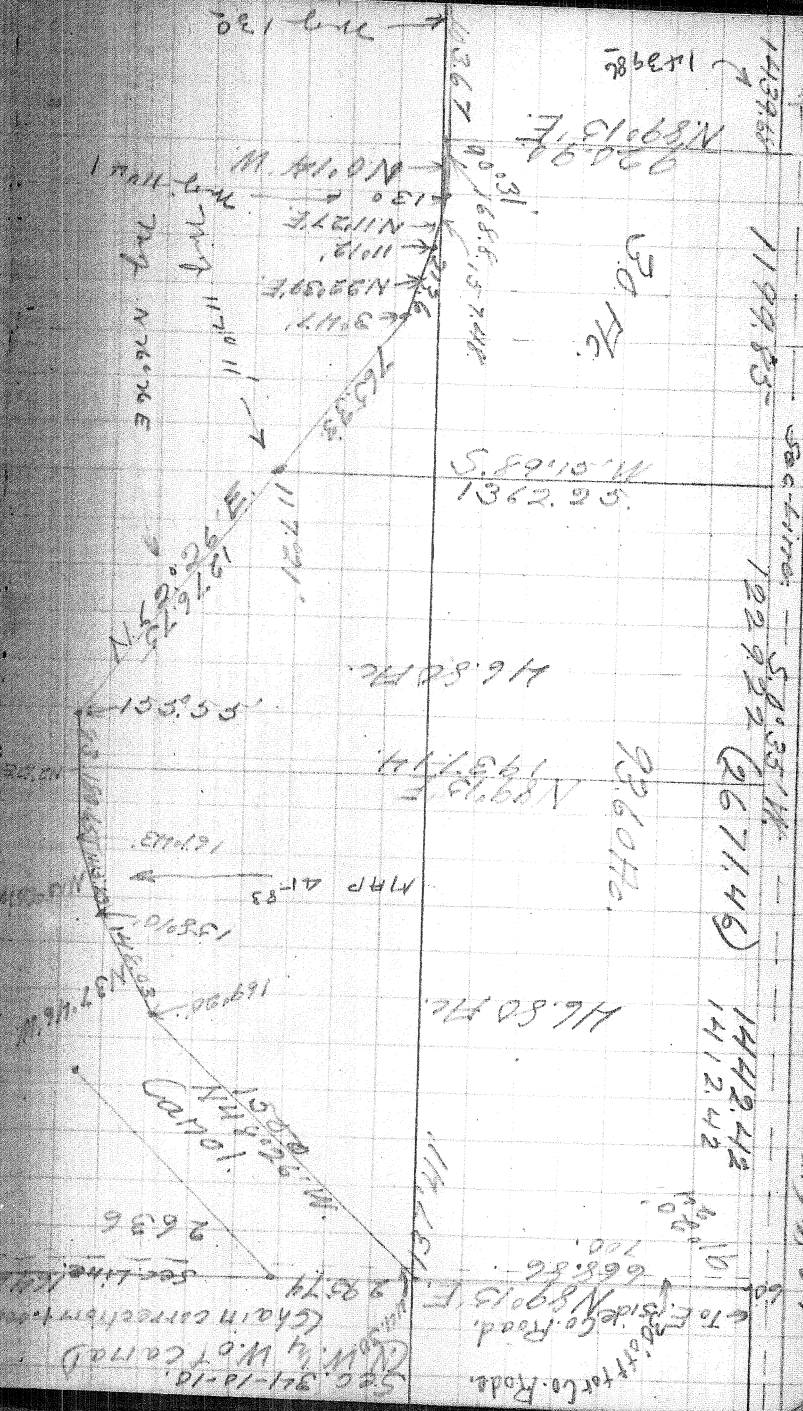
N 89° 15' E
1437.14

9360 HD.

116.80 AC.

116.80

Go. Rd.
E. of E. side of Go. Rd.
for Co. Road.
700.
668.86
N 89° 15' E



Sec. 34-12-10.
W. of W. of (road)
(Chain correction)
285.74
Section