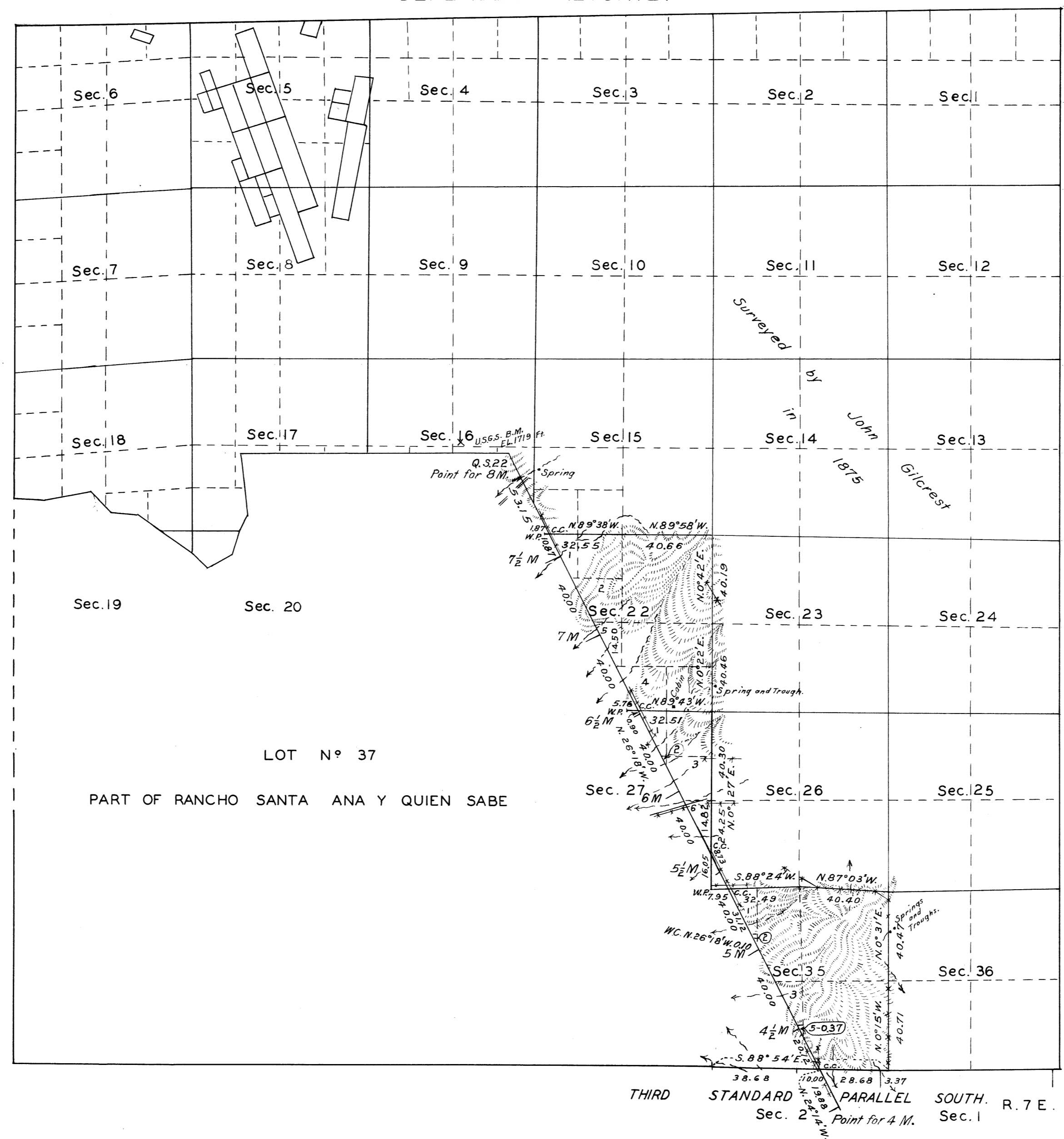


TOWNSHIP N° 12 SOUTH , RANGE N° 7 EAST , MOUNT DIABLO MERIDIAN , CALIFORNIA

DEPENDENT RESURVEY



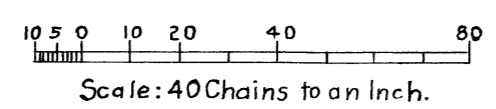
MEMORANDUM.

This plat of the resurvey of sections 22, 27 and 35, T. 12 S., R. 7 E., delineates a retracement and reestablishment of the lines of the original surveys as shown upon the plat approved January 6, 1876, in their true original position according to the best available evidence of the position of the original corners, except that the east boundary of the Rancho Santa Ana y Quien Sabe has been reestablished in accordance with the record of the original survey of that line as preserved in the original patent. All differences between the measurements shown in the original records and those derived in the retracements have been distributed proportionally between accepted corners in accordance with surveying rules.

Reference will be made to the original plat for the description and areas of all subdivisions except lot 3, now lot 5, of Sec. 22, lots 4 and 5, now lot 6, of Sec. 27, and lot 4, now lot 5, of Sec. 35. Lot 1 of Sec. 34 has been entirely eliminated.

Surveyed under authority of letter 1262747, Sacramento 018166, "E", dated May 16, 1929.

Lat. 36° 50' N.
Long. 121° 09' W.



Area resurveyed 1,098.83 Acres

LINES DESIGNATED	BY WHOM SURVEYED	GROUP		MILEAGE		WHEN SURVEYED	
		N°	DATE	MLS.	CHS.	BEGUN	COMPLETED
Stand. Par	Roger F. Wilson	234	Aug. 26, 1929	1	0.73	May 17, 1930	May 17, 1930
Subdivisional	U.S. Transitman.	"	"	5	38.35	" 19, "	" 20, "
Rancho Bdy.	"	"	"	3	73.27	" 26, "	" 28, "
Miscellaneous	"	"	"	"	51.62	" 17, "	" 28, "

Office of U.S. Supervisor of Surveys
Denver, Colorado, Dec. 10, 1931.

The above plat of Township No. 12 South, Range No. 7 East, of the Mount Diablo Meridian, California, is strictly conformable to the field notes of the survey thereof which have been examined and approved.

Frank Johnson
U.S. Supervisor of Surveys.

DEPARTMENT OF THE INTERIOR
GENERAL LAND OFFICE.

Washington, D.C., April 12, 1932
The survey represented by this plat having been correctly executed in accordance with the requirements of law and the regulations of this office, is hereby accepted.

Wm. C. Howell
Assistant Commissioner.

O.B.T.
Exam. HSP

44 818

Registers Receipt July 22, 1932.

T12 SR7E MD