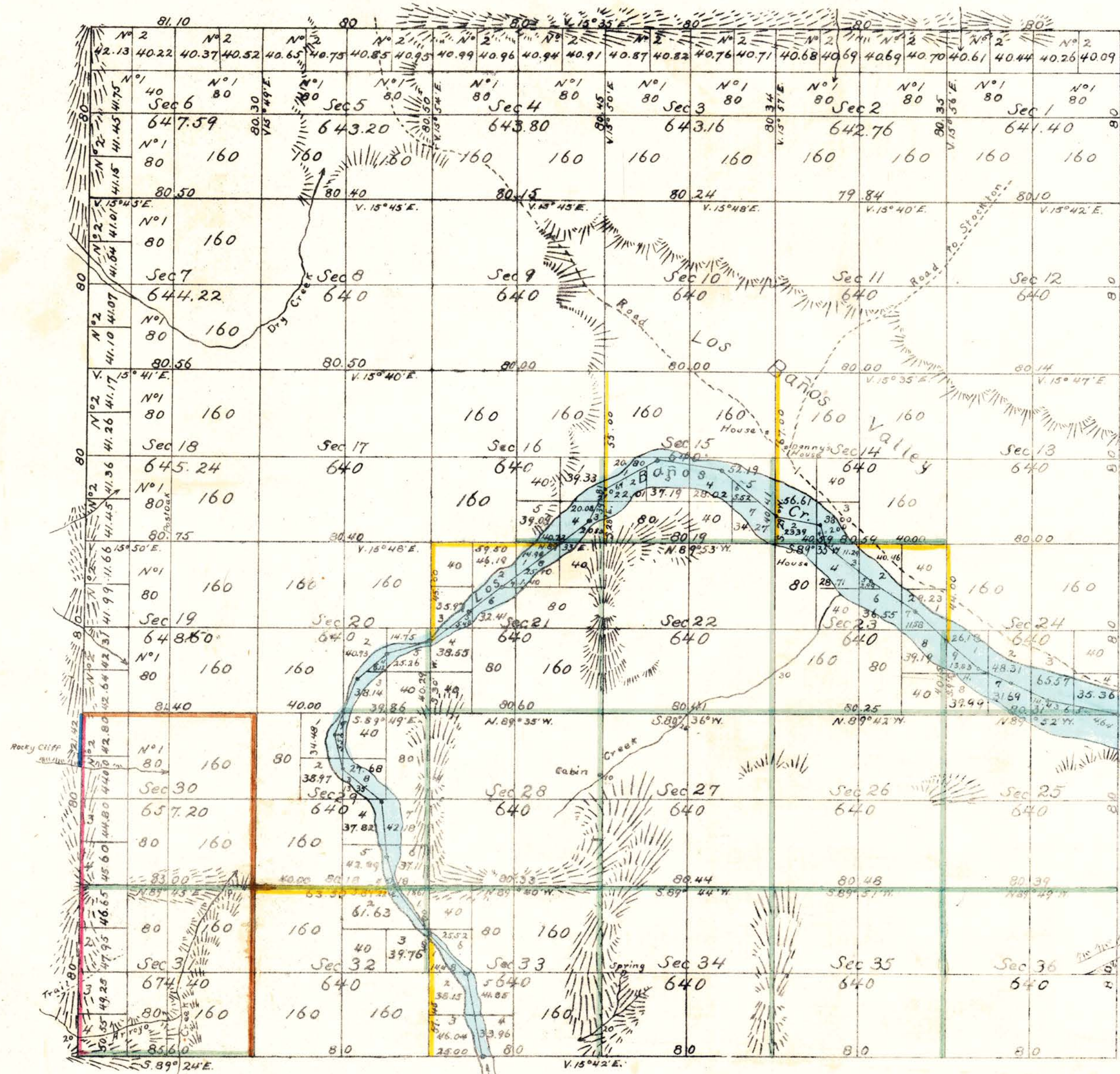


H.H.B.  
D.K.G.F.R.  
J.H.

Township N° 11 South, Range N° 8 East, Mount Diablo Meridian.



Transmitted for filing in Registers Office at San Francisco Dec. 30, 1875.

Public Land Surveyed by Terrell 14,606.28 Acres  
 " " Reed 8,525.29 "  
 Aggregate Area of Public Land 23,131.57 "

For lines colored brown see field notes of Exterior Boundaries.

DEPARTMENT OF THE INTERIOR,  
 GENERAL LAND OFFICE,

Washington, D. C. Feb. 14, 1907.

I hereby certify that this photo-lithograph is a true and literal exemplification of the township plat of survey to which it purports to relate, now on file in this office.

*W. A. Richards*  
 Commissioner.

Variation reported by Terrell on lines not otherwise noted 15° 35' E.  
 " " Reed 16° E.

Surveys Designated	By whom surveyed	Date of Contract	Amt. of Surveys	When surveyed
Township lines not colored	H. Washington	Nov. 27 <sup>th</sup> 1857		1858
" " colored blue	"	"		"
Section lines colored brown	"	"		"
" " not colored	J.E. Terrell	July 2 <sup>nd</sup> 1859		1859
" " colored yellow	"	"		"
Meanders	"	"		"
Township lines colored red	J. Gilcrest	July 27 <sup>th</sup> 1875		1875
" " " green	John Reed	August 4 <sup>th</sup> "	1m. 5chs 60lks	"
Section "	"	"	24. 47. 91 "	Sept. 28, 1875.

The above Map of Township N° 11 South, Range N° 8 East, Mount Diablo Meridian is strictly conformable to the field notes of the Surveys thereof on file in this Office which have been examined and approved.

Surveyor General's Office,  
 San Francisco Cal.  
 December 30, 1875

44 752

*J. Washington*  
 Surv. Gen. Cal.

JAT