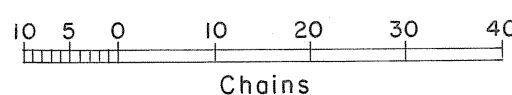
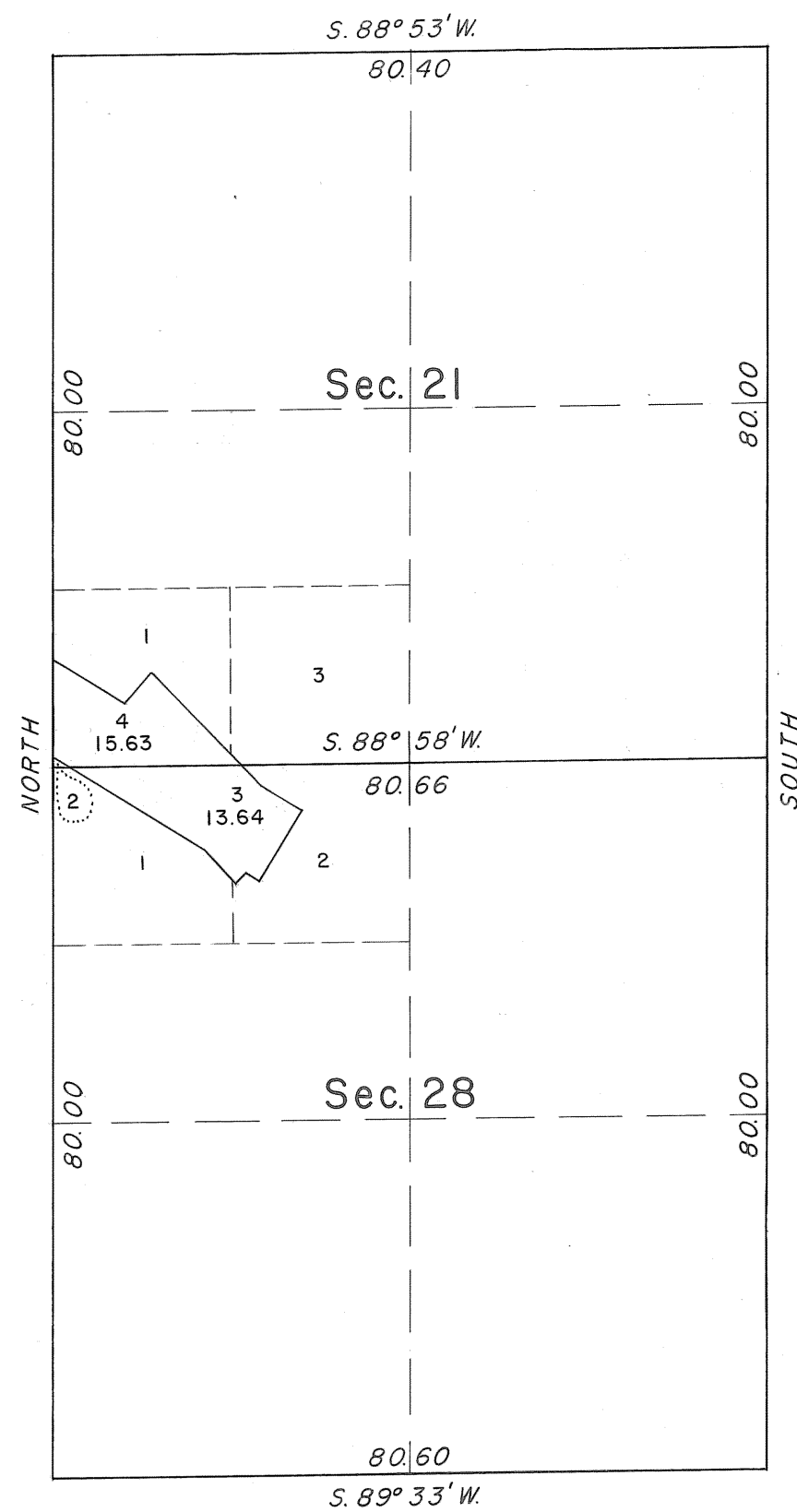
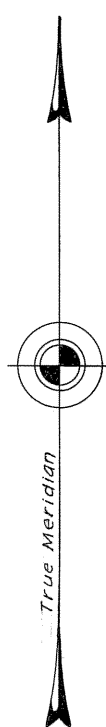


TOWNSHIP 11 SOUTH, RANGE 7 EAST, OF THE MOUNT DIABLO MERIDIAN, CALIFORNIA.  
SUPPLEMENTAL PLAT



Boundaries of Lot 4, Sec. 21	
From a point North, 1.97 chs. of the cor. of secs. 20, 21, 28 and 29.	
North,	10.59 Chs.
S. 59° 07' E.,	10.16 "
N. 42° 35' E.,	4.63 "
S. 43° 28' E.,	14.29 "
S. 88° 58' W.,	18.09 "
N. 59° 07' W.,	3.63 "
to point of beginning.	

Boundaries of Lot 3, Sec. 28	
From a point N. 88° 58' E., 3.05 chs., of the cor. of secs. 20, 21, 28 and 29.	
N. 88° 58' E.,	18.09 Chs.
S. 43° 28' E.,	2.79 "
S. 59° 07' E.,	5.75 "
S. 30° 53' W.,	9.09 "
N. 59° 07' W.,	1.89 "
S. 42° 35' W.,	1.345 "
N. 43° 28' W.,	4.95 "
N. 59° 07' W.,	17.32 "
to point of beginning	

This supplemental plat of T. 11 S., R. 7 E., Mount Diablo Meridian, California, showing new lottings in sections 21 and 28 created by the cancellation of mineral surveys of lot 37, Santa Cruz Quicksilver Mine lode and lot 38, Mariposa Quicksilver Mine lode, is based upon the township plat approved October 21, 1879, and mineral survey records.

UNITED STATES DEPARTMENT OF THE INTERIOR  
BUREAU OF LAND MANAGEMENT  
Washington, D. C.      October 1, 1970

This plat, showing new lottings, is based upon the official records, and having been correctly prepared in accordance with the regulations, is hereby accepted.

For the Director

Chief, Division of Cadastral Survey