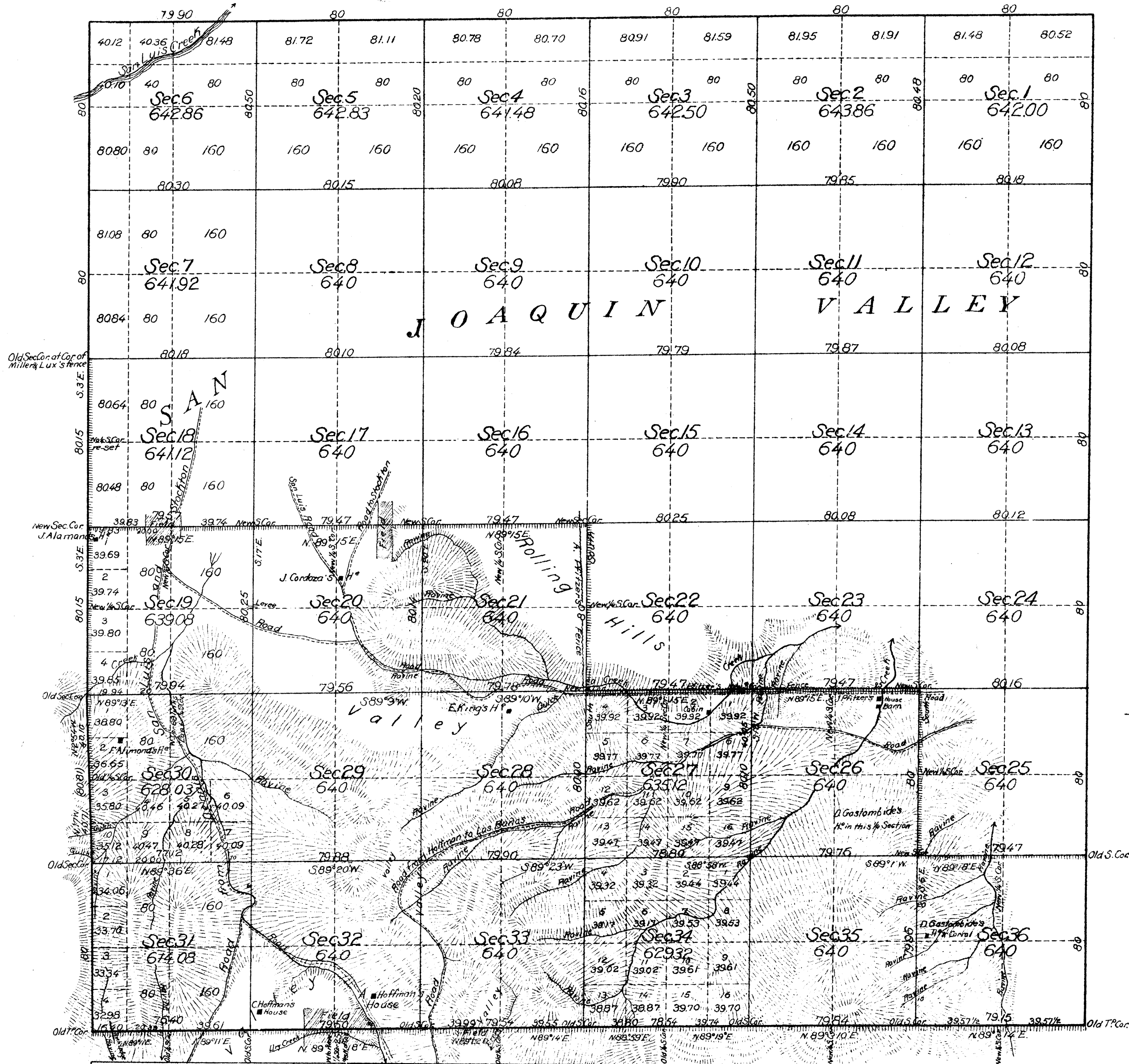


Township N<sup>o</sup> 10 South, Range N<sup>o</sup> 9 East, Mount Diablo Meridian.

A. G.  
O.K.  
1886



Aggregate Area of Public land surveyed by C.C. Tracy in 1854 14,098.57 Acres.  
LM. Gillham in 1886 8,921.19  
Aggregate Area of Township 23,019.76

Surveys Designated	By Whom Surveyed	Date of Contract	Amount of Surveys Miles Chained, Li.	When Surveyed	Mean Declination
North and East boundary of Township	C. C. Tracy	August 26 <sup>th</sup> 1853		1853	15° 15' East
North half of West boundary of Township		April 18 <sup>th</sup> 1854		1854	
Section lines shaded black, and those lying North of the same		Instructions August 1 <sup>st</sup> 1854		1854	
South half of West boundary of Township	Henry Washington	November 27 <sup>th</sup> 1858		1858	15° 30' East
Township lines shaded black - resurveyed.	Lewis M. Gillham	February 25 <sup>th</sup> 1885	8. 72. 11	1886	15° 42' East
Section lines shaded black - resurveyed.			7. 76. 92	1886	
Section lines lying south of Section lines shaded black - new survey			18. 75. 19	May 28 <sup>th</sup> 1886	

The above Map of Township N<sup>o</sup> 10 South of Range N<sup>o</sup> 9 East of Mount Diablo Meridian is strictly conformable to the field notes of the surveys thereof on file in this Office, which have been examined and approved.  
Surveyor General's Office,  
San Francisco, California,  
March 9, 1888.

*F. A. Davidson*  
Surv. Gen. Cal.

DEPARTMENT OF THE INTERIOR  
CENTRAL LAND OFFICE,  
Washington, D. C. Jan 27 1887

I hereby certify that this photolithograph is a true and literal exemplification of the township plat of survey to which it purports to relate, now on file in this office.

*W. A. Richardson*  
Commissioner