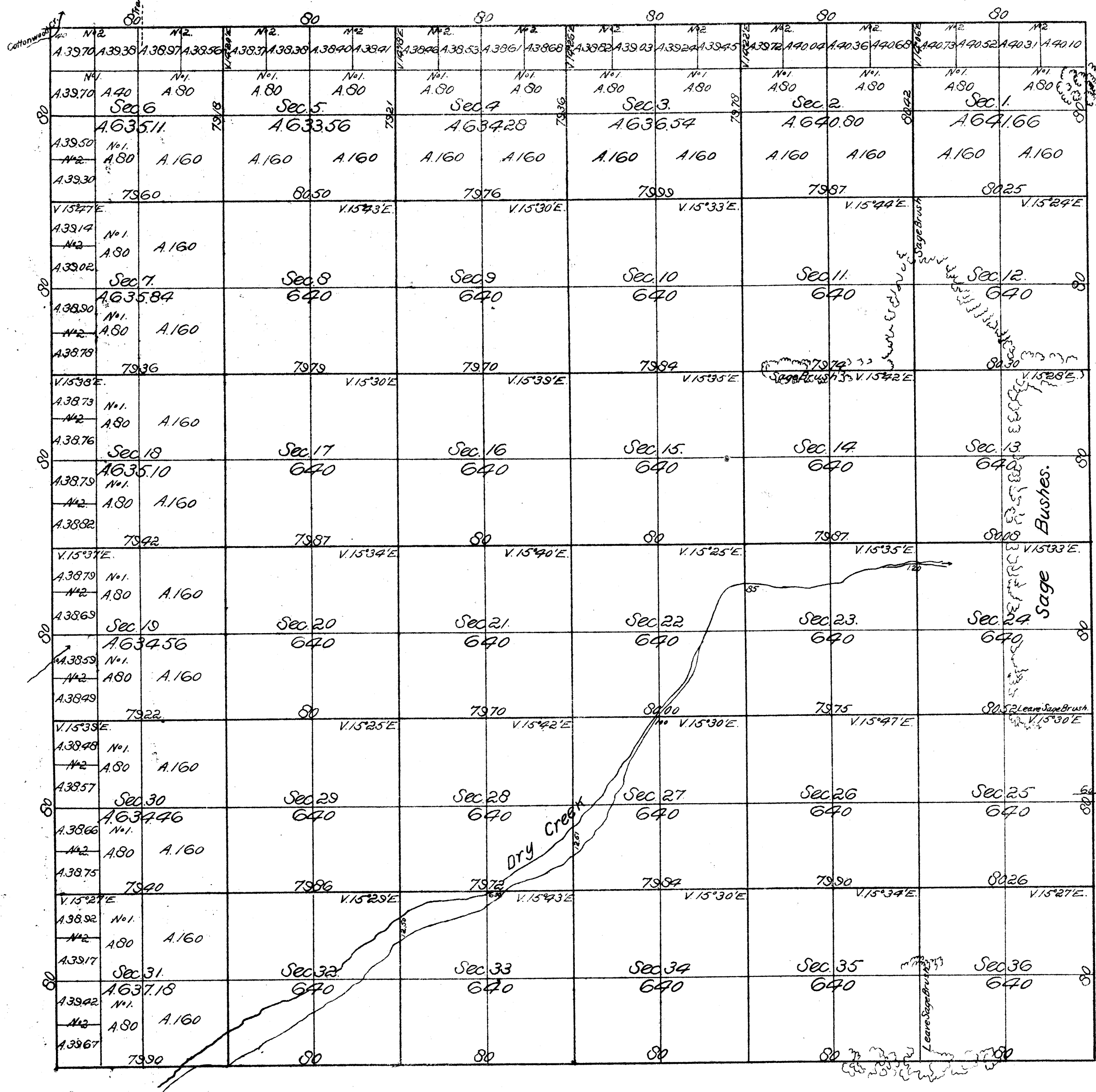


Township N^o 9. South,

Range N^o 9 East,

Mount Diablo Meridian.

J. B. P.



Aggregate Area of Public lands 22 999.09 Acres.

Meridian lines not otherwise noted, run at a variation of 14°20' East.

Surveys Designated	By Whom Surveyed	Date of Contract	Amount of Surveys	When Surveyed
North Boundary of Townships	A. W. Von Schmitt	May 26 th 1853.	Miles 6 00 00.	1853.
Rest of Township lines.	C. C. Tracy.	August 26 th 1853.	17. 79 90	1853.
Section lines	J. E. Terrell	July 2 nd 1859.	59 74 06	November 22 nd 1859

The above Map of Township N^o 9 South, Range N^o 9 East, (Mount Diablo Meridian) is strictly conformable to the field notes of the Surveys thereof on file in this Office which have been examined and approved.
 Surveyor General's Office,
 San Francisco, California
 March 3rd 1860.

DEPARTMENT OF THE INTERIOR,
 GENERAL LAND OFFICE,
 Washington, D. C. Jan. 22 1867.
 I hereby certify that this photo-lithograph is a true and literal exemplification of the township plat of survey to which it purports to relate, now on file in this office.

M. H. Richardson
 Commissioner.

J. N. Mendenhall
 U.S. Surv. Gen. Cal.