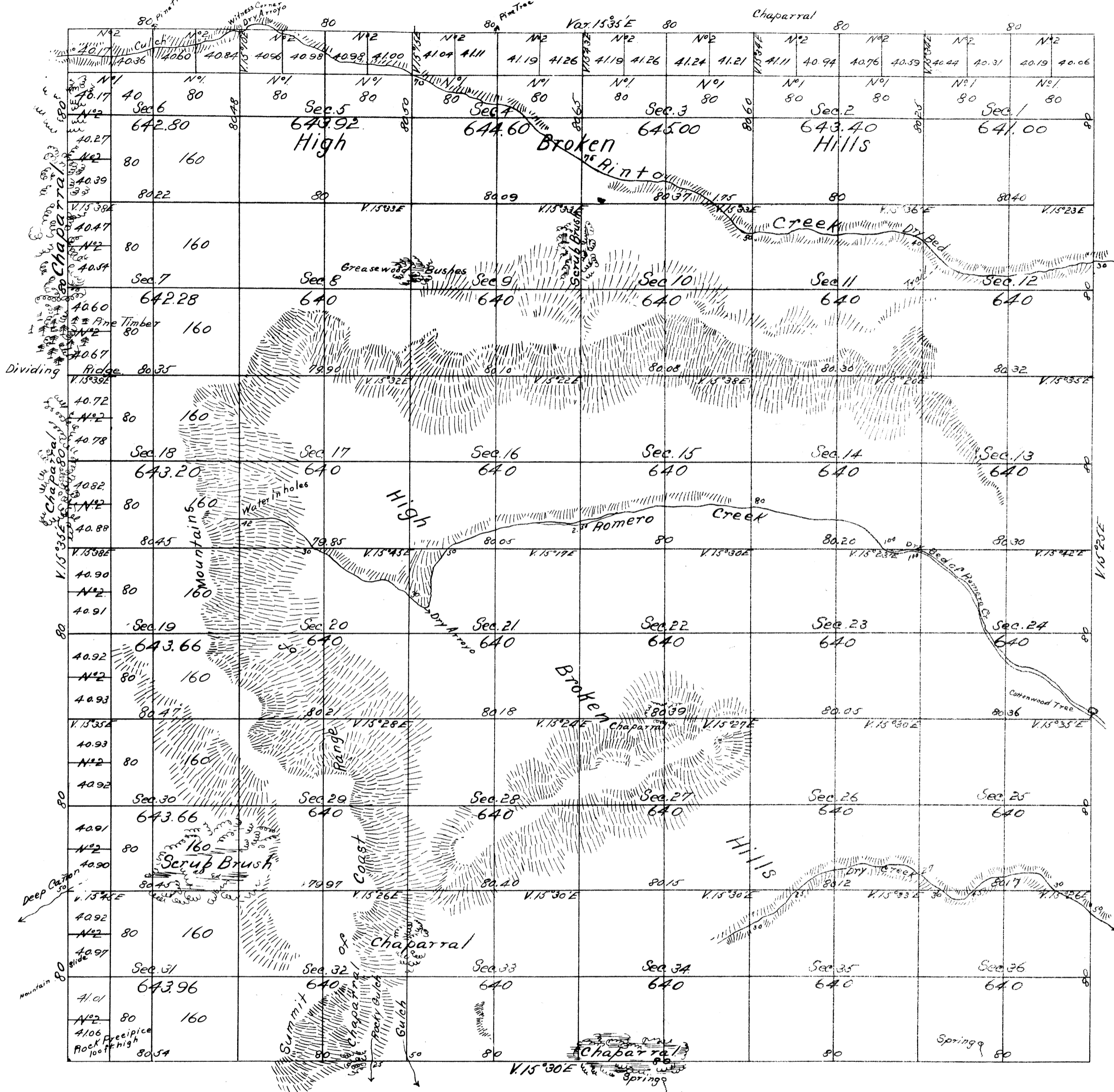


Township N° 9 South Range N° 7 East Mount Diablo Meridian

M. E. J. O'NEILL
J. H.



Aggregate Area of Public Lands 23,077.48 Acres

DEPARTMENT OF THE INTERIOR,
GENERAL LAND OFFICE,
Washington, D. C. Feb 14 1907.
I hereby certify that this photo-lithograph is
a true and literal exemplification of the township
plat of survey to which it purports to relate, now
on file in this office.

M. H. Richard
Commissioner.

Marian lines not otherwise noted, run at a Variation of 15° 30' East

Surveys Designated	By Whom Surveyed	Date of Contract	Amount of Surveys	When Surveyed
Township lines	Henry Washington	November 27 th 1858	2.4 Miles 00chs 541hs	1858
Section lines	J. E. Terrell	July 2 nd 1859	60 . 08 . 38	November 22 nd 1859

The above Map of Township No. 9 South, Range No. 7 East (Mount Diablo Meridian) is strictly conformable to the field notes of the Surveys thereof on file in this Office; which have been examined and approved,
Surveyor General's Office,
San Francisco, California
March 3rd 1860.

J. W. Mundwille

U. S. Surv. Gen. Cat.

T9S R7E MD