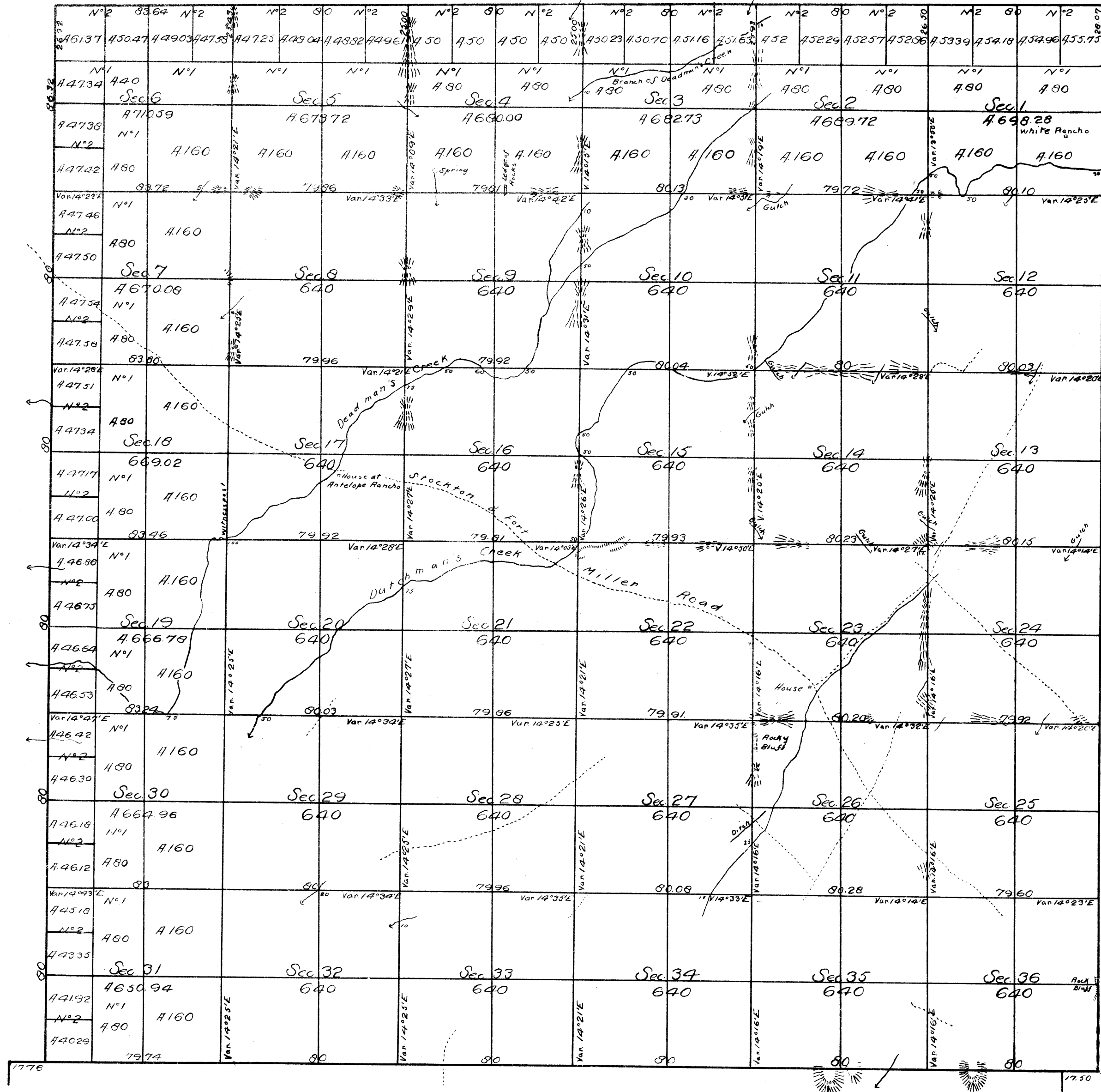


Township N° 8 South Range N° 17 East of the Mount Diablo Meridian.



G.J.
D.A.
P.S.
G.F.P.

Aggregate Area of Public Lands 2345781 Acres

Surveys designated	By whom surveyed	Date of Contract	Amount of Surveys		When surveyed
			Miles	Chains Links	
South boundary of Township	A. W. von Schmidt	21 st Oct. 1852 & 1 st Sept. 1853	5	79 74	1853
West boundary	" " " "	26 th May 1853	6	06 32	" "
North & East boundaries	Edward Twitchell	23 rd August 1855	12	11 71	1855
Section lines	" " " "	" " " "	60	42 53	" "

The above Map of Township N° 8 South, Range N° 17 East of Mount Diablo Meridian is strictly conformable to the field notes of the Survey thereof on file in this Office, which have been examined and approved

Surveyor General's Office
San Francisco California
January 29th 1856

DEPARTMENT OF THE INTERIOR,
GENERAL LAND OFFICE,

Washington, D. C. June 26, 1907.

I hereby certify that this photo-lithograph is a true and literal exemplification of the township plat of survey to which it purports to relate, now on file in this office.

John Wiley
Surveyor General California

W. A. Richards
Commissioner