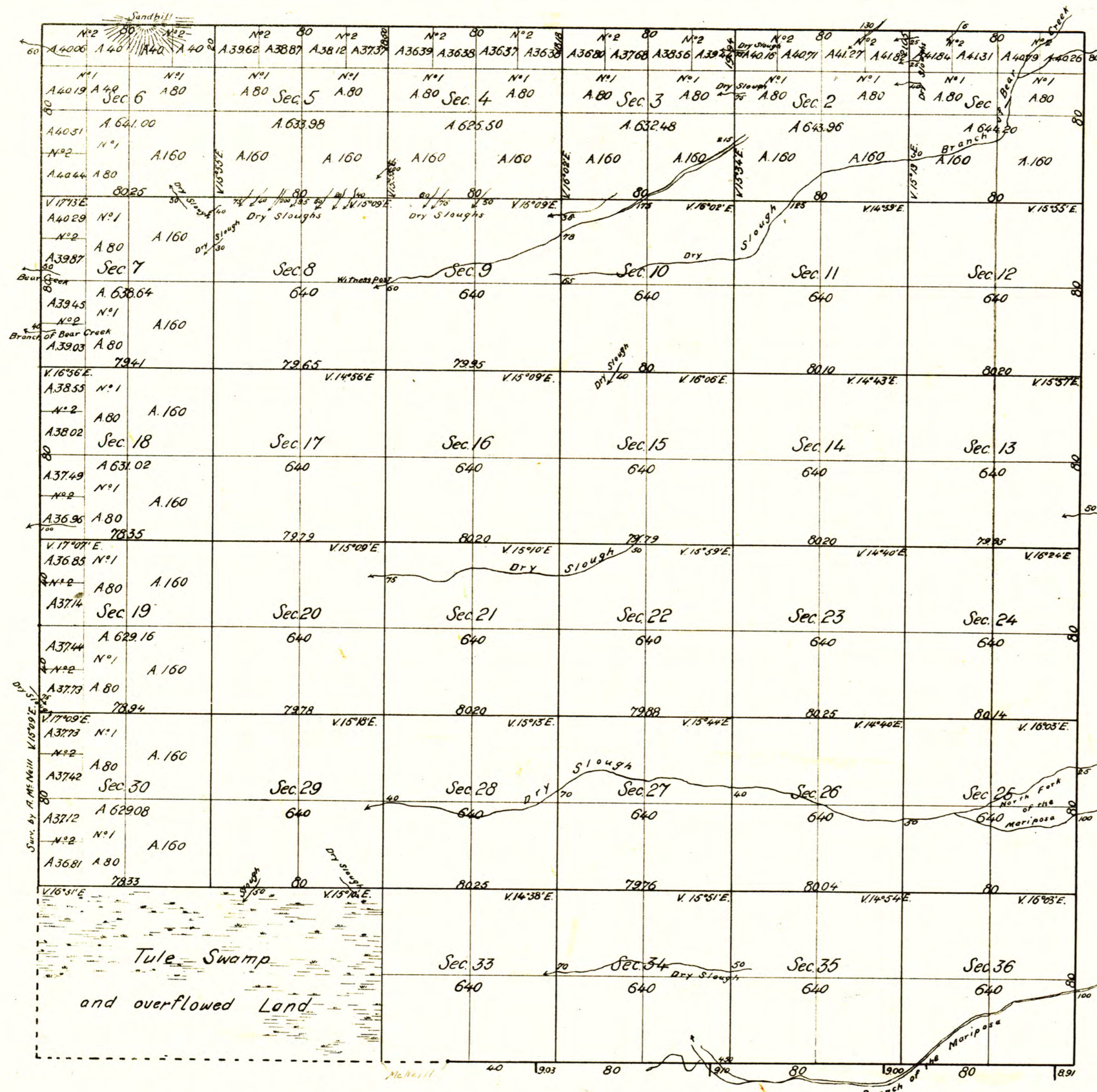


Township N° 8 South,

Range N° 12 East,

Mount Diablo Meridian.

1



Aggregate Area of Public Lands Surveyed / 21709.02 Acres.  
 Estimated Tule not Surveyed / 1266.64  
 Aggregate 22975.66

Lines colored red returned at present.

Meridians not otherwise noted ran at a Variation of 15° 09' East.

Surveys designated	By whom Surveyed	Date of Contract	Amount of Surveys Miles Chains Links	When Surveyed
East boundary of Township.	A. W. Von Schmidt	21 <sup>st</sup> Oct 1852 + 1 <sup>st</sup> Sept 1853	6 00 00	1853
North and South boundary	---	May 26 <sup>th</sup> 1853	9 48 91	---
West boundary --- / part /	---	---	3 40 00	---
West --- / part /	Archibald McNeill	June 12 <sup>th</sup> 1856	1 40 00	1856
Section lines.	---	---	58 73 08	---

The above Map of Township N° 8 South, Range N° 12 East (Mount Diablo Meridian) is strictly conformable to the field notes of the Survey thereof on file in this Office, which have been examined and approved.

Surveyor General's Office,  
 San Francisco California,  
 December 1<sup>st</sup> 1856.

DEPARTMENT OF THE INTERIOR,  
 GENERAL LAND OFFICE,

Washington, D. C. Feb. 1 1907  
 Surveyor General California.

I hereby certify that this photo-lithograph is a true and literal exemplification of the township plat of survey to which it purports to relate, now on file in this office.

44 549

M. A. Richmond  
 Commissioner

T8S R12E MD

100

102