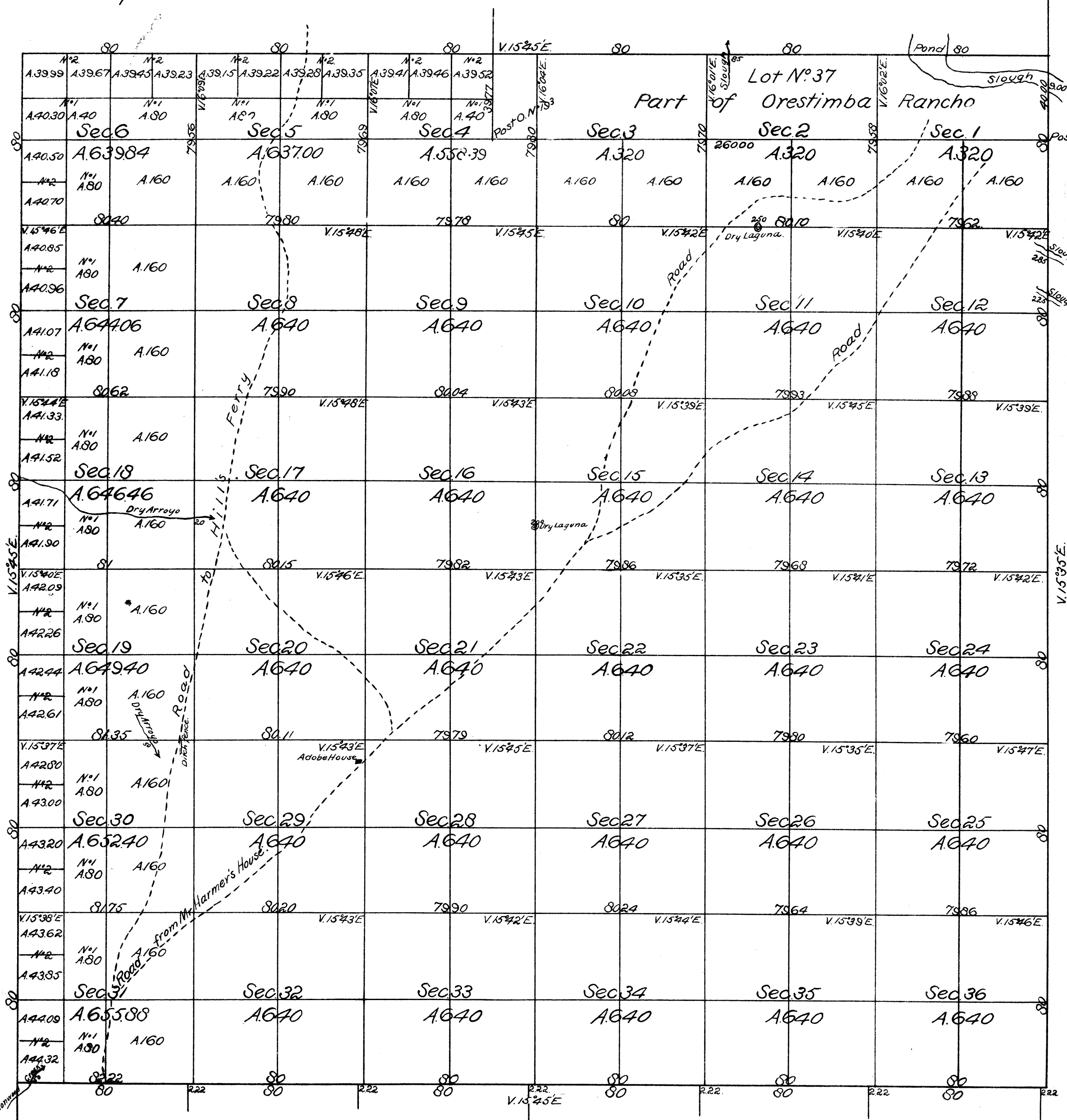


Township N. 8 South, Range N. 9 East, Mount Diablo Meridian.



J.B.P.
O.K. J.B.S.J. G.P.

Aggregate Area of Public Lands.	22043.43 Acres.
Estimated " " Lot No. 37 (Private Grant)	1032.97 "
Aggregate	<u>23076.40 "</u>

Meridian lines not otherwise noted, ran at a Variation of 15°32' East.

Surveys Designated	By whom Surveyed	Date of Contract.	Amount of Surveys	When Surveyed
Township lines.	A. W. Von Schmidt	May 26 th 1853	24 miles 02 cts 22 lns.	1853
Section "	J. E. Terrell.	July 2 nd 1859	60 " 01 " 07 "	October 16 th 1859
Exterior boundaries of Lot No 37	E. H. Dyer.	Special Instructions dated October 3 rd 1861	4 " 19 " 77 "	1861

The above Map of Township N. 8 South, Range N. 9 East (Mount Diablo Meridian) is strictly conformable to the field notes of the Surveys thereof, on file in this Office, which have been examined and approved.
Surveyor General's Office
San Francisco California.
January 4th 1860

J. W. Manderville
Surv. Gen. Cal.

DEPARTMENT OF THE INTERIOR
CENTRAL LAND OFFICE,
Washington, D. C. Jan. 22, 1907.

I hereby certify that this photo-lithograph is a true and literal exemplification of the township plat of survey to which it purports to relate, now on file in this office.

W. H. Richardson
Commissioner

A full true and correct copy of the original Map, as amended, on file in this Office.
Surveyor General's Office
San Francisco California.
February 21st 1862.

E. H. Seal
Surv. Gen. Cal.

