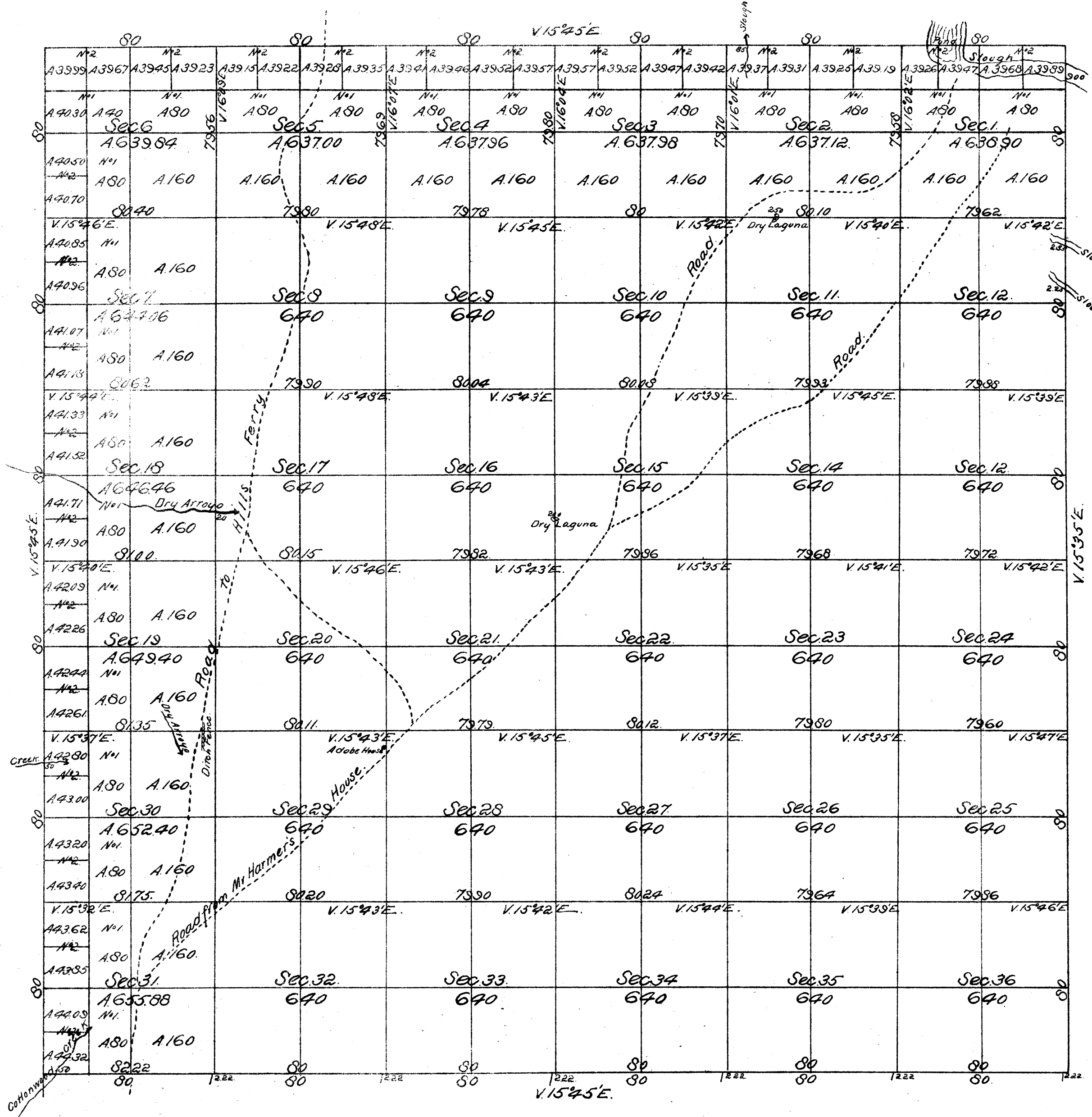


Township No 8 South,

Range No 9 East,

Mount Diablo Meridian.

J.B.P.



Aggregate Area of Public land (Surveyed) 23,076.40 Acres.

DEPARTMENT OF THE INTERIOR
 GENERAL LAND OFFICE,
 Washington, D. C. Jan. 22, 1907.
 I hereby certify that this photo-lithograph is
 a true and literal exemplification of the town and
 plat of survey to which it purports to relate, now
 on file in this office.
M. W. Rice
 Commissioner.

Surveys Designated	By Whom Surveyed	Date of Contract	Amount of Surveys.	When Surveyed.
Township lines	A. W. van Schmitt.	May 26 th 1853.	Miles Chains Links 24 . 02 . 22	1853.
Section lines	J. E. Terrell.	July 2 nd 1859.	60 . 01 . 07.	October 16 th 1859.

The above Map of Township No 8 South, Range No 9 East (Mount Diablo Meridian) is strictly conformable to the field notes of the Surveys thereof on file in this Office, which have been examined and approved.
 Surveyor General's Office,
 San Francisco California
 January 4th 1860.

44 538-A

J. M. Munnell
 U.S. Surv. Gen. Cal.