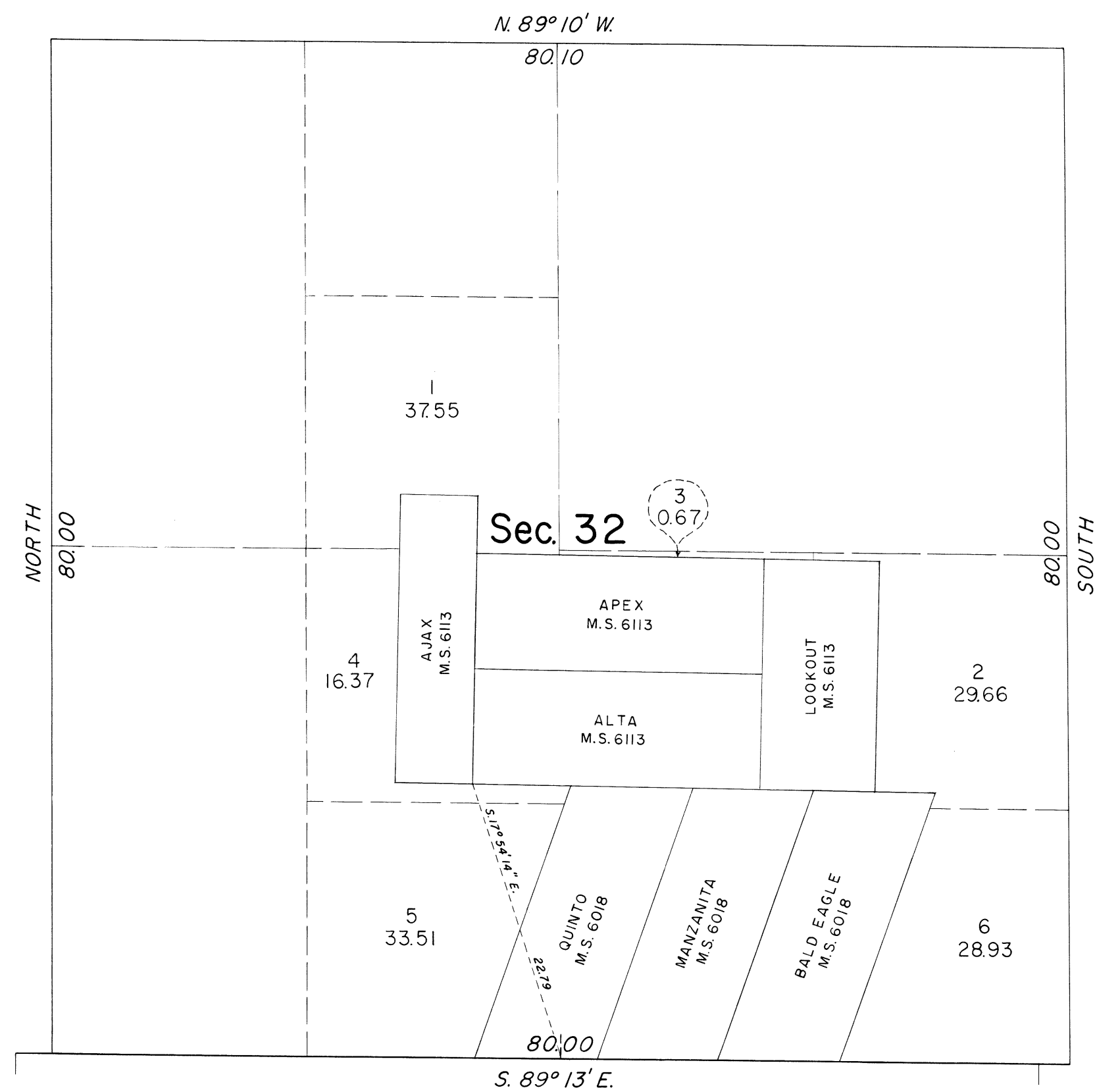
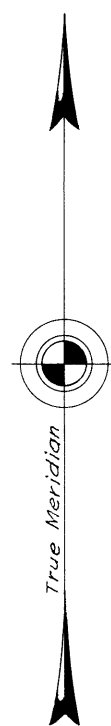


TOWNSHIP 8 SOUTH, RANGE 7 EAST, OF THE MOUNT DIABLO MERIDIAN, CALIFORNIA. SUPPLEMENTAL PLAT



This plat, showing amended lottings created by the segregation of the Baldeagle, Manzanita and Quinto lodes of Mineral Survey No. 6018; and Ajax, Apex, Alta, and Lookout lodes of Mineral Survey No. 6113 of Sec. 32, T. 8 S., R. 7 E., Mount Diablo Meridian, California, is based upon the township plat approved October 28, 1880; Mineral Plats approved July 1, 1929, and February 15, 1932.

UNITED STATES DEPARTMENT OF THE INTERIOR
BUREAU OF LAND MANAGEMENT
Washington, D.C. November 21, 1961

This plat, showing amended lottings, is based upon the official records, and having been correctly prepared in accordance with the regulations is hereby accepted.

For the Director

E. Pennington
Chief, Division of Engineering