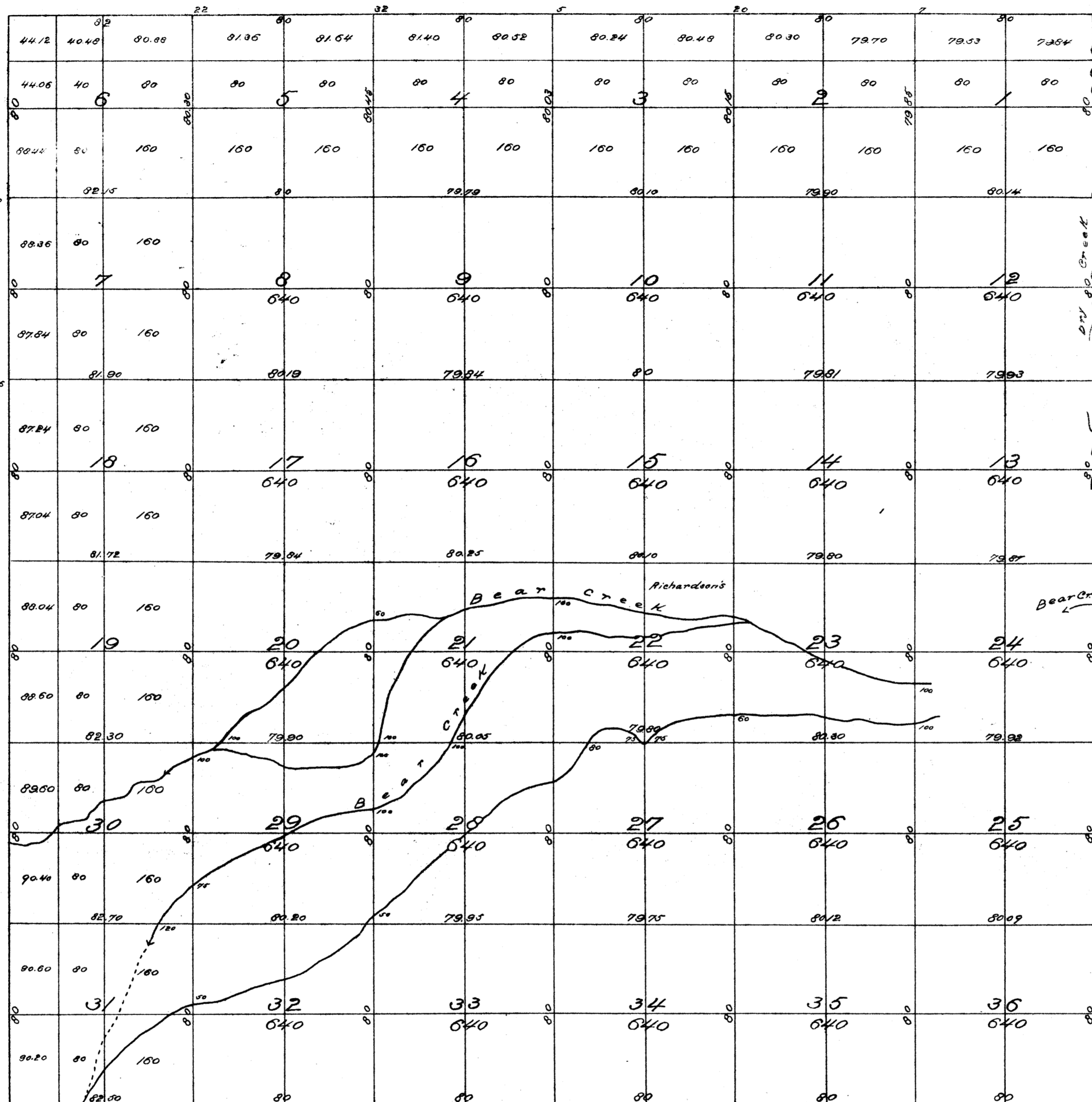


Township N^o 7 South Range N^o 13 East of the Mount Diablo Meridian.

KMS
J.B.S. Jr
G.F.P.



The above plat of Township N^o 7 South, Range N^o 13 East (Mount Diablo Meridian) has been made out from, and in conformity to the field notes of the undermentioned surveys thereof returned to this Office; which have been examined and approved.

Under Date	Contract With	Work executed and exhibited.	Distance		Cost		Payments charged in accounts of the Surveyor General for the	
			Miles	chs.	Dolls	cts.		
May 26 th 1853	A W Von Schmidt	North Boundary of Township	6	02	00	84	38	4 th Quarter 1853
"	"	East	6	00	00	84	00	"
"	"	South	6	02	50	84	44	"
October 21 st 1852	"	West	6	00	00	90	00	" 1852
Sept 9 th 1853	Fred R Loring	Section Lines	60	11	19	727	67	4 " 1853
							1064	46

Total number of Acres 23,151.91

Surveyor General's Office,
San Francisco, California.
28th February, 1855

John W. Kearney
Surr. Genl. Cal.

DEPARTMENT OF THE INTERIOR,
GENERAL LAND OFFICE,

Washington, D. C. Jan 24, 1857.
I hereby certify that this photolithograph is a true and literal exemplification of the township plat of survey to which it purports to relate, now on file in this office.

W. A. Richardson
Comptroller, MD