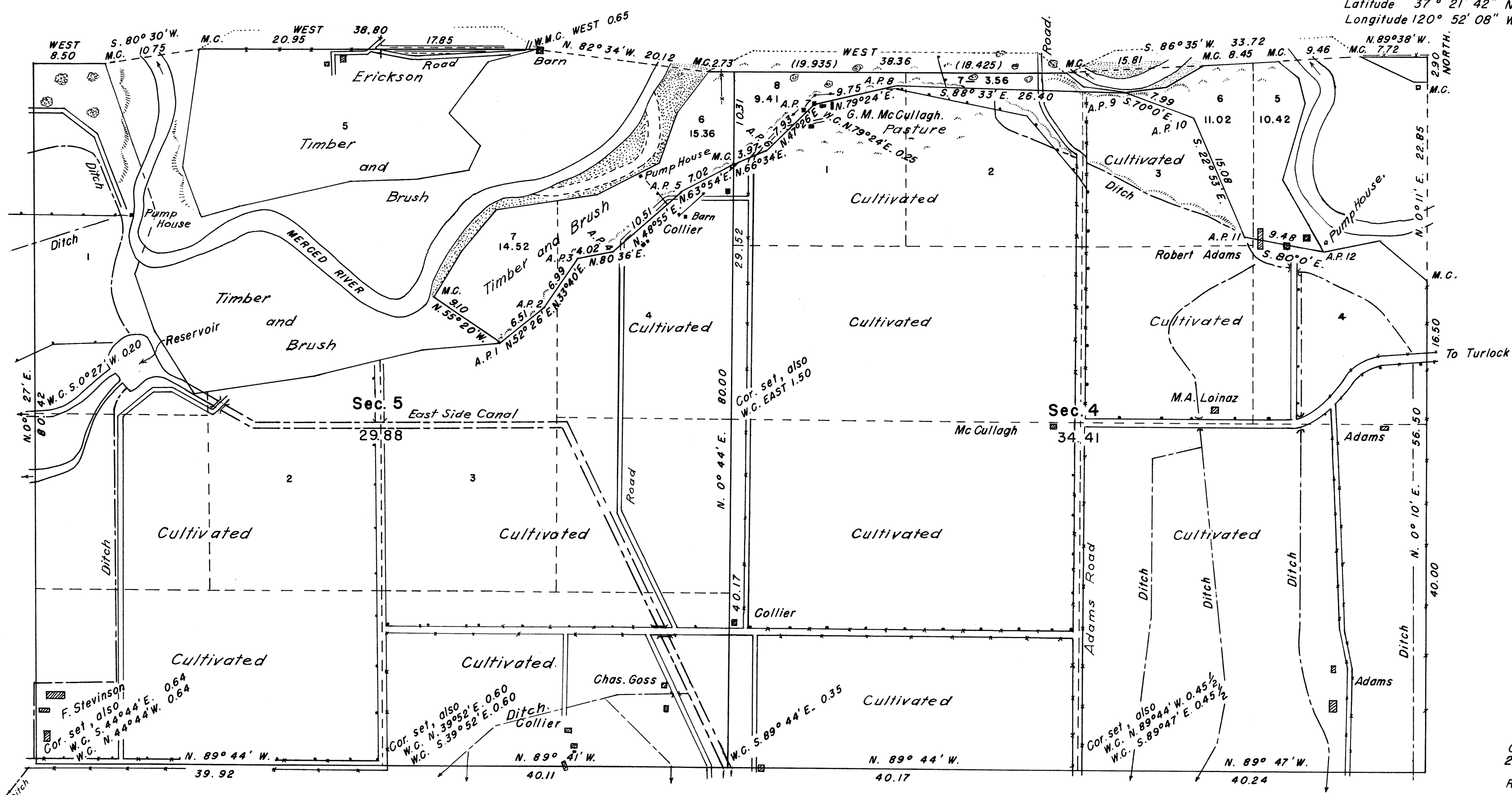


TOWNSHIP N^o 7 SOUTH , RANGE N^o 10 EAST , MOUNT DIABLO MERIDIAN , CALIFORNIA .
 DEPENDENT RESURVEY AND EXTENSION OF LINES SUBDIVIDING LAND BORDERING THE MERCED RIVER .
 SECTIONS 4 AND 5 .

Latitude 37° 21' 42" N.
 Longitude 120° 52' 08" W.



+ Cor. secs. 1, 6, 7 and 12.
 Remonumented.

Cor. secs.
 2, 3, 10 and 11
 +
 Remonumented.

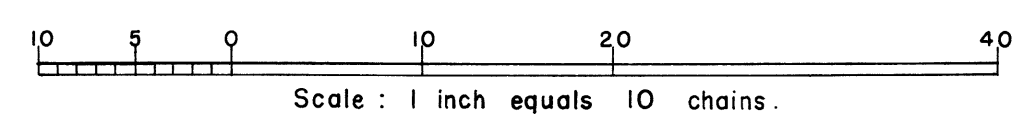
Cor. secs. 7, 8, 17 and 18
 Remonumented +

Cor. secs. 8, 9, 16 and 17
 + Remonumented.

This plat of the resurvey of the boundaries of sections 4 and 5, T. 7 S., R. 10 E., authorized by General Land Office letter "E" dated December 15, 1939, executed for the purpose of providing designation and area for unsurveyed swamp lands, delineates a retracement and reestablishment of the lines of the original survey as shown upon the plat approved January 31, 1855, in their true original position according to the best available evidence of the position of the original corners; all differences between the measurements shown on the original plat and those derived in the retracement have been distributed proportionally between accepted corners in accordance with surveying rules.

The position of the original record-meander courses of the Merced River fronting along lots 1, 2, 3 and a part of 4, section 4, and a part of lot 3 and lot 4, section 5, is shown by an irregular line with numbered angle points. This line as thus originally reported was grossly in error, and has therefore been marked as a fixed boundary, with the directions and lengths of the several courses adjusted to the record of the original survey.
 Reference will be made to the original plat for the showing of the areas and more detailed description of the various subdivisions except where new areas are shown hereon.

Mean Magnetic Declination 17° 45' E. Area Surveyed 64.29 Acres.



LINES DESIGNATED	BY WHOM SURVEYED	GROUP N ^o	DATE OF SPECIAL INSTRUCTIONS	WHEN SURVEYED	
				BEGUN	COMPLETED
Exterior Subdivisional Meander	Quintin Campbell	121	Feb. 28, 1941	Aug. 26, 1941	Dec. 19, 1941
	"	"	"	"	"
	"	"	"	"	"

O.B.T.

UNITED STATES DEPARTMENT OF THE INTERIOR
 GENERAL LAND OFFICE

Denver, Colorado, Jan. 10, 1945
 This plat of sections 4 and 5, Township No. 7 South, Range No. 10 East, of the Mount Diablo Meridian, California, is strictly conformable to the field notes of the survey thereof which have been examined and approved.

Washington, D. C. JULY 21, 1945.
 The survey represented by this plat having been correctly executed in accordance with the requirements of law and the regulations of this office, is hereby accepted.

[Signature]
 Supervisor of Surveys.

[Signature]
 Assistant Commissioner.