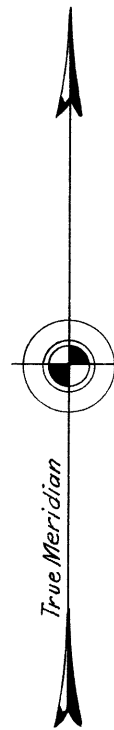
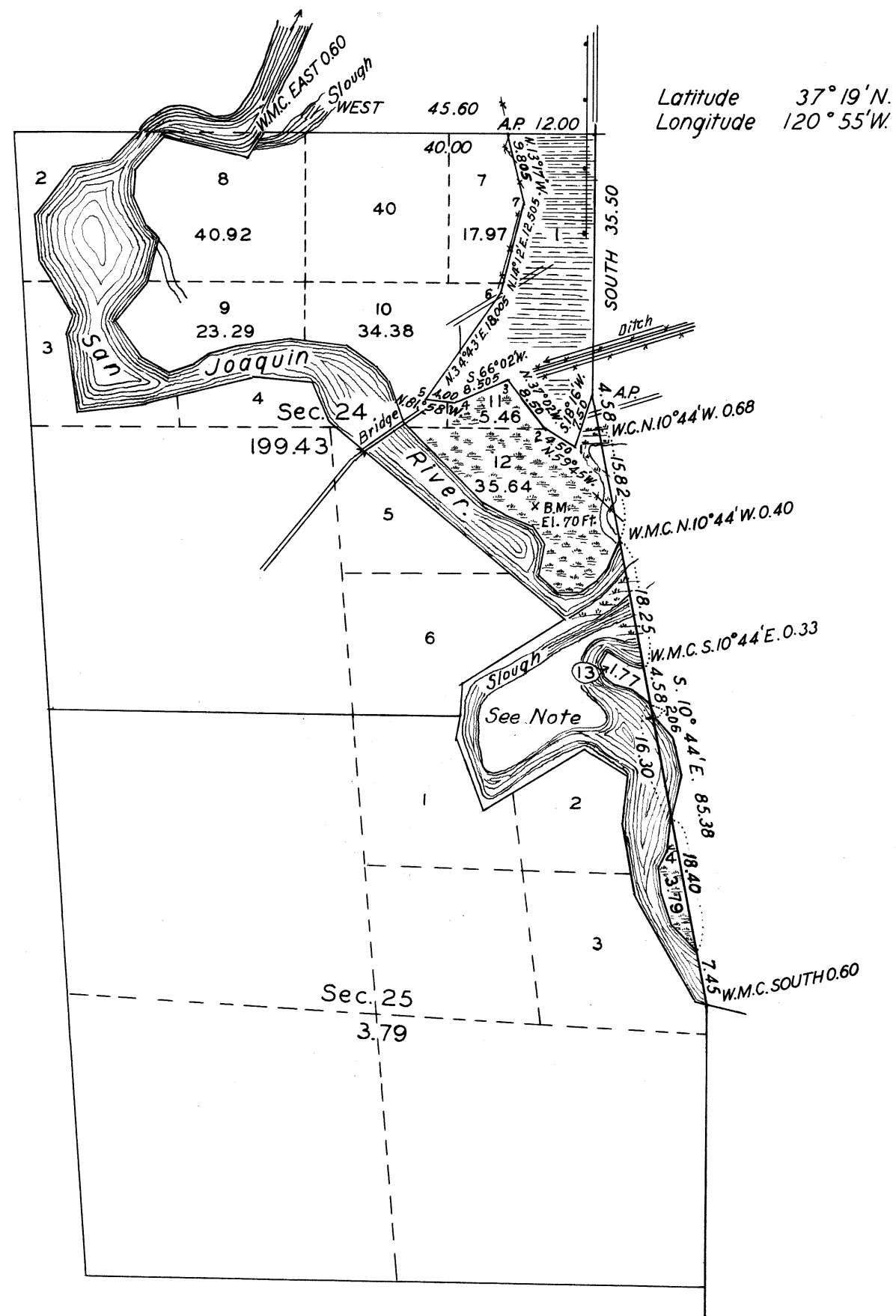


TOWNSHIP N° 7 SOUTH, RANGE N° 9 EAST, MOUNT DIABLO MERIDIAN, CALIFORNIA



NOTE:
The survey represented by this plat has been executed for the purpose of providing designations and areas for the unsurveyed tract of land shown as swamp land on the official plat approved January 4, 1860.

NOTE
The un-lotted area in the SE ¼ Sec. 24 and the NE ¼ Sec. 25 is not considered public land of the United States. The area has formed since 1850, when California was admitted into the Union, and since the date of the original survey and disposition of the adjacent lands. The laws of the State of California will govern as to ownership.

Scale: 20 Chains to an Inch. Area Surveyed 203.22 Acres.

LINES DESIGNATED	BY WHOM SURVEYED	GROUP		MILEAGE		WHEN SURVEYED	
		N°	DATE	MLS.	CHS.	BEGUN	COMPLETED
Exterior	Dupree R. Averill	245	Feb. 10, 1930	1	40.88	Oct. 10, 1932	Oct. 22, 1932
Subdivisional	"	"	"		45.60	"	"
Meander	"	"	"	3	10.28	"	"

O.B.T.

Office of U.S. Supervisor of Surveys.
Denver, Colorado, Jan. 27, 1933
The above plat of sections 24 and 25, Township No. 7 South, Range No. 9 East, of the Mount Diablo Meridian, California, is strictly conformable to the field notes of the survey thereof which have been examined and approved.

Wm. H. Dimes
U. S. Supervisor of Surveys.

DEPARTMENT OF THE INTERIOR
GENERAL LAND OFFICE.
Washington, D.C., May 23, 1933.
The survey represented by this plat having been correctly executed in accordance with the requirements of law and the regulations of this office, is hereby accepted.

D. C. Gaudin
Acting Assistant Commissioner.