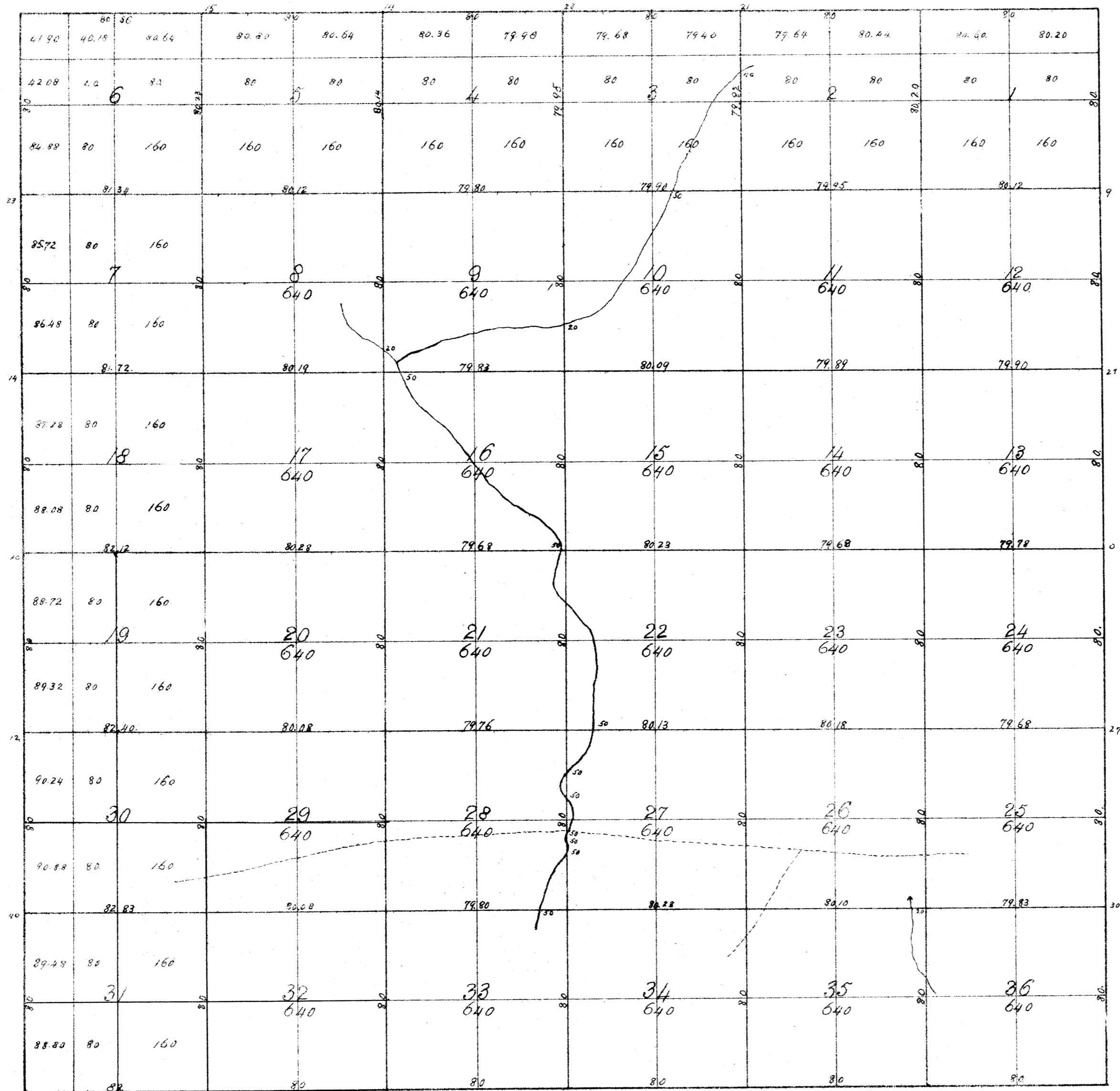


Township N^o 6 South Range N^o 13 East of the Mount Diablo Meridian.



J.B.S.Jr.
G.F.R.

The above plat of Township N^o 6 South, Range N^o 13 East (Mount Diablo Meridian) has been made out from and in conformity to the field notes of the undermentioned Surveys thereof, returned to and filed in this Office which have been examined and approved.

Total number of Acres 2313640

Under Date	Contract With	Work executed and exhibited	Distance Miles	Cost Dollars	Payments charged in accounts of the Surveyor General for the
May 26 th 1853	A. W. Von Schmidt	North Boundary of Township	6 00 86	84 15	4 th quarter 1853
"	"	East	6 00 02	84 00	"
"	"	South	6 02 00	84 35	"
October 21 st 1852, Sept. 1 st 1853	"	West	6 00 00	90 00	1852
September 9 th 1853	Fredk. P. Loring	Section Lines	60 10 06	721 50	1853
				1064 00	

Surveyor General Office
San Francisco, California.
February 28th 1855.

DEPARTMENT OF THE INTERIOR,
GENERAL LAND OFFICE
Washington, D. C. April 30, 1907.
I hereby certify that this is a true copy of the plat of official survey of the lands to which it relates, on file in this office.

Fred Bennett
Acting Recorder

John C. Wray
Surveyor General, California.