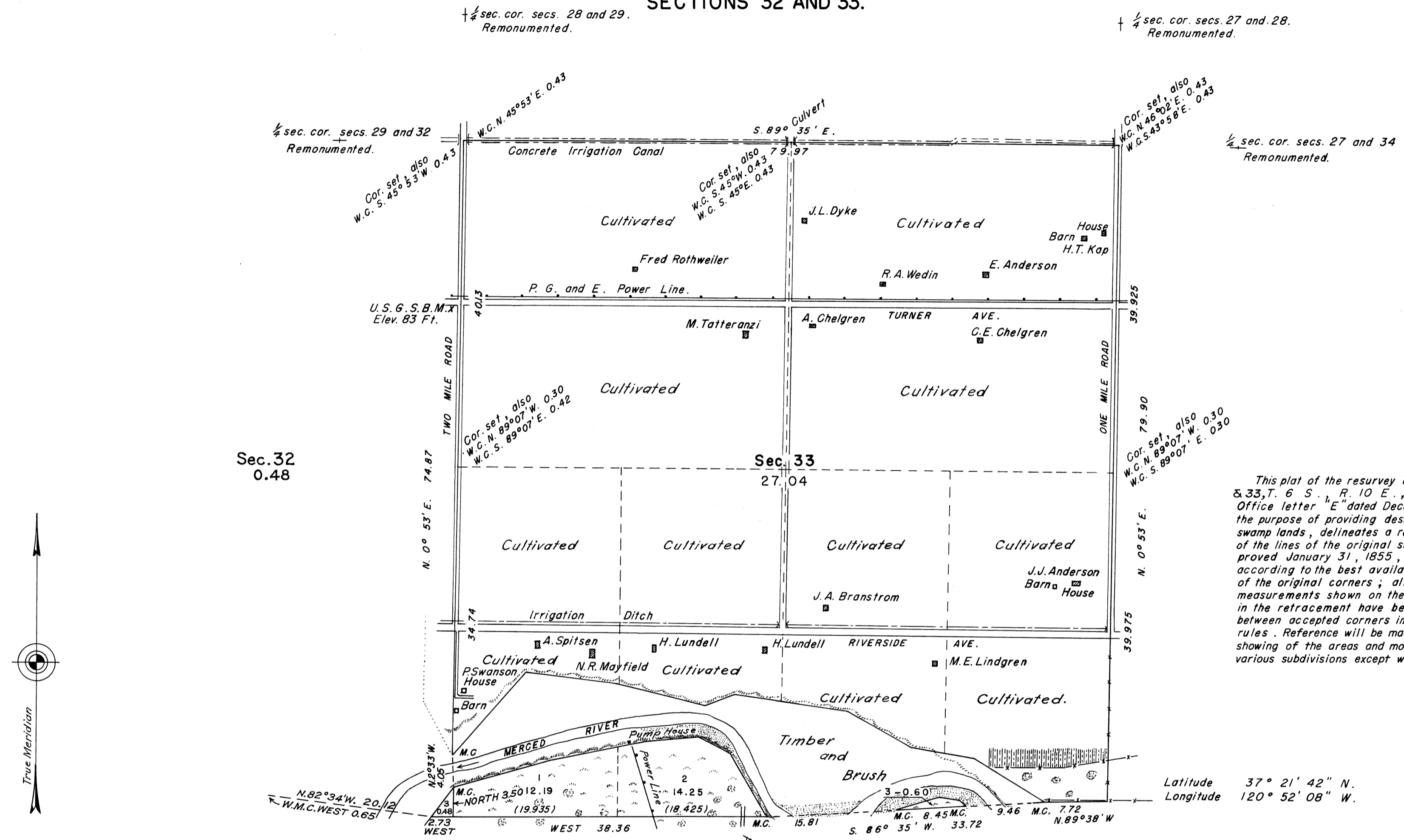


**TOWNSHIP N° 6 SOUTH , RANGE N° 10 EAST , MOUNT DIABLO MERIDIAN , CALIFORNIA .**  
**DEPENDENT RESURVEY AND EXTENSION OF LINES SUBDIVIDING LAND BORDERING THE MERCED RIVER .**  
**SECTIONS 32 AND 33.**

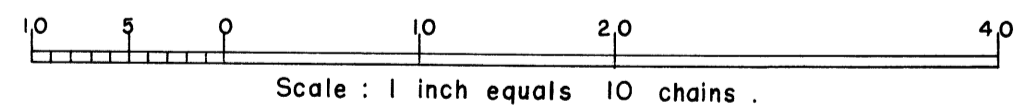


This plat of the resurvey of the boundaries of section 32 & 33, T. 6 S., R. 10 E., authorized by General Land Office letter "E" dated December 15, 1939, executed for the purpose of providing designation and area for unsurveyed swamp lands, delineates a retracement and reestablishment of the lines of the original survey as shown upon the plat approved January 31, 1855, in their true original position according to the best available evidence of the position of the original corners; all differences between the measurements shown on the original plat and those derived in the retracement have been distributed proportionally between accepted corners in accordance with surveying rules. Reference will be made to the original plat for the showing of the areas and more detailed description of the various subdivisions except where new areas are shown hereon.

For detail of S. bdy. of Sec. 32 see plat of Secs. 4 and 5 of T. 7 S., R. 10 E.

Mean Magnetic Declination 17° 45' E.

Area Surveyed 27.52 Acres.



LINES DESIGNATED	BY WHOM SURVEYED	GROUP N°	DATE OF SPECIAL INSTRUCTIONS	WHEN SURVEYED	
				BEGUN	COMPLETED
Exterior	Quintin Campbell	121	Feb. 28, 1941.	Aug. 26, 1941	Dec. 19, 1941
Subdivisional	"	"	"	"	"
Meander	"	"	"	"	"

O.B.T.

UNITED STATES DEPARTMENT OF THE INTERIOR  
 GENERAL LAND OFFICE

Denver, Colorado, Jan. 10, 1945  
 This plat of section 32 & 33, Township No. 6 South, Range No. 10 East, of the Mount Diablo Meridian, California, is strictly conformable to the field notes of the survey thereof which have been examined and approved.

Washington, D. C., JULY 21, 1945.  
 The survey represented by this plat having been correctly executed in accordance with the requirements of law and the regulations of this office, is hereby accepted.

*W. H. ...*  
 Supervisor of Surveys.

*Joel David Wolfson*  
 Assistant Commissioner.