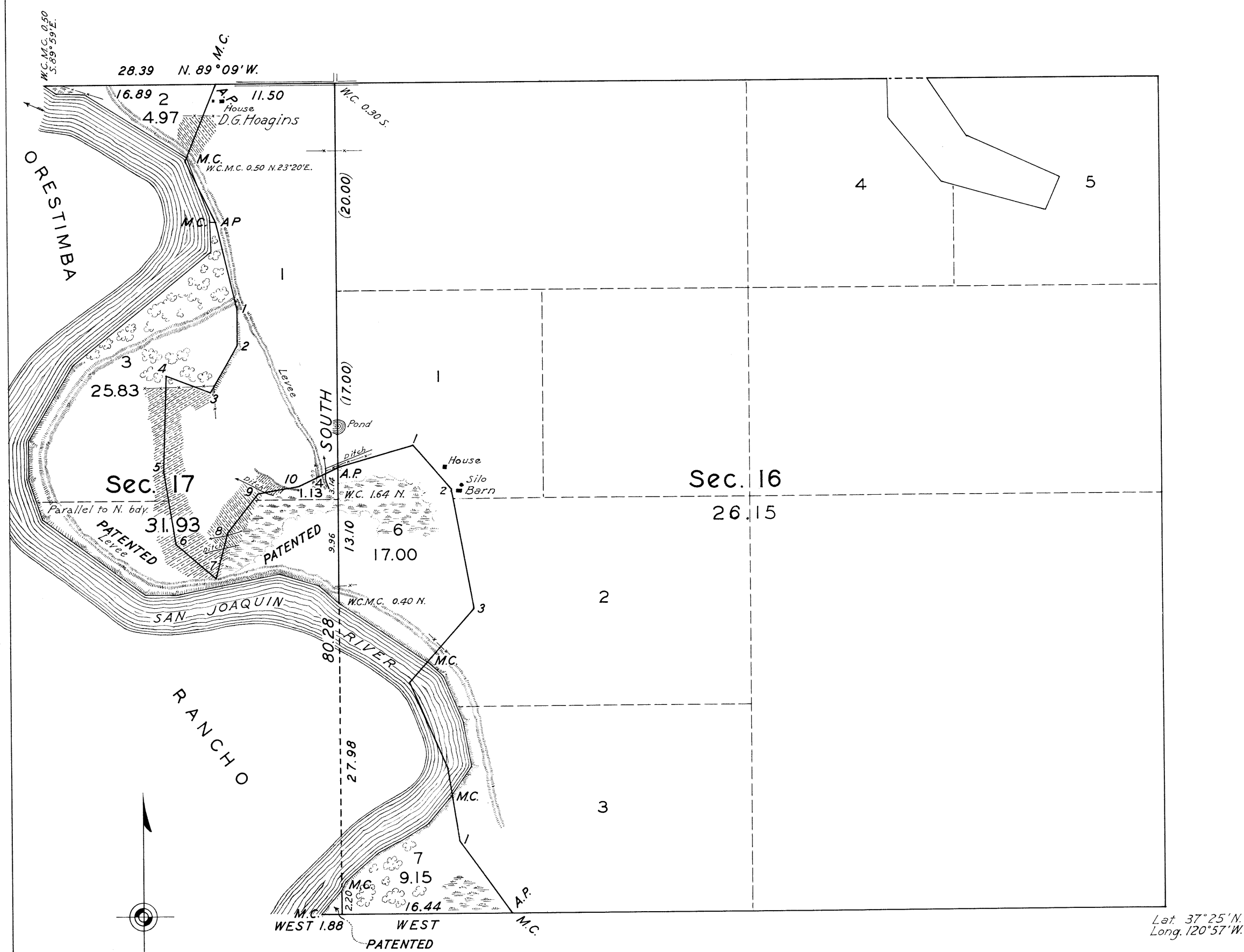


TOWNSHIP N° 6 SOUTH, RANGE N° 9 EAST, MOUNT DIABLO MERIDIAN, CALIFORNIA.

DEPENDENT RESURVEY AND EXTENSION OF LINES SUBDIVIDING LAND BORDERING MERCED AND SAN JOAQUIN RIVERS.
SECTIONS 16, 17 AND 36

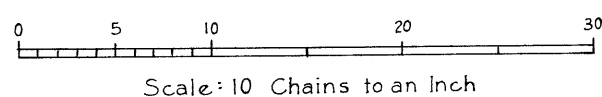


Lat. 37° 25' N.
Long. 120° 57' W.

The survey represented by this plot has been executed for the purpose of providing designations and areas for the unsurveyed tracts of land shown as swamp land on the official plot of the original survey, approved January 31, 1853.

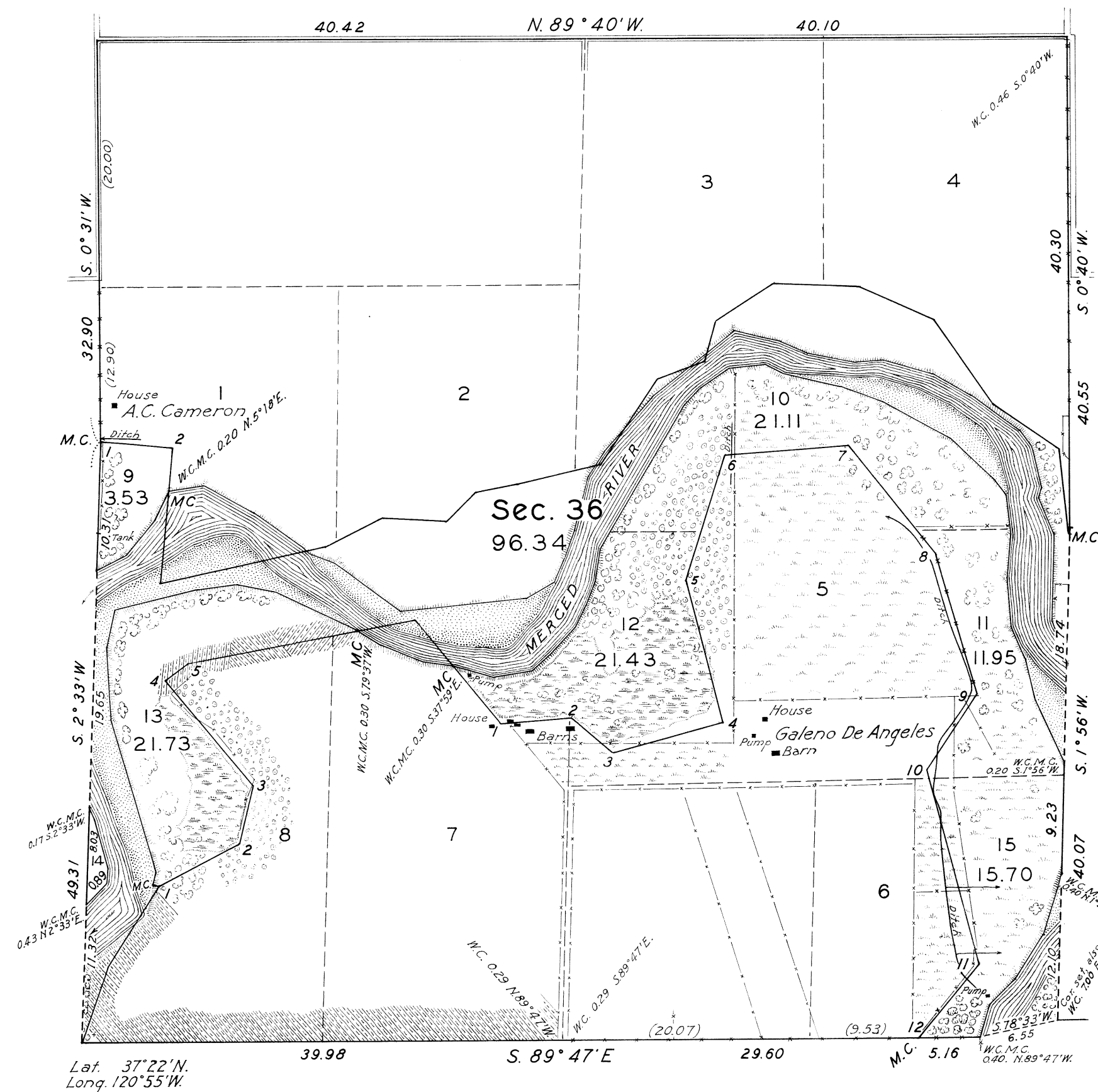
The position of the original-record-meander courses of the Merced River fronting on lots 5, 6, and 7, and portions of lots 1 and 8 sec. 36, and of the San Joaquin River fronting on lots 1, 2, and 3 sec. 16 and lot 1 sec. 17 is shown by an irregular line with numbered angle points. This line has been marked as a fixed boundary, with the directions and lengths of the several courses adjusted to the record of the original survey.

This survey was authorized by the Commissioner's letter "E," dated and approved by the Assistant Secretary of the Interior April 17, 1934.



Area Surveyed 154.42 Acres.

LINES DESIGNATED	BY WHOM SURVEYED	GROUP No.	DATE	MILEAGE		WHEN SURVEYED	
				MLS.	CHS.	BEGUN	COMPLETED
Exterior	Wm. E. Hiester	256	May 25, 1934	1	75.36	Dec. 12, 1938	Jan. 8, 1939
Subdivisional				3	51.92		
Meander				10	29.96		
Connections					6.55		



Lat. 37° 22' N.
Long. 120° 55' W.

Office of Supervisor of Surveys

Denver, Colorado, April 24, 1939.

The above plat of sections 16, 17 and 36 of Township No. 6 South, Range No. 9 East, of the Mount Diablo Meridian, California, is strictly conformable to the field notes of the survey thereof which have been examined and approved.

Wm. E. Hiester
Supervisor of Surveys.

UNITED STATES
DEPARTMENT OF THE INTERIOR
GENERAL LAND OFFICE

Washington, D.C., March 4, 1940

The survey represented by this plat having been correctly executed in accordance with the requirements of law and the regulations of this office, is hereby accepted.

Joe David Hufferd
Acting Assistant Commissioner.

97