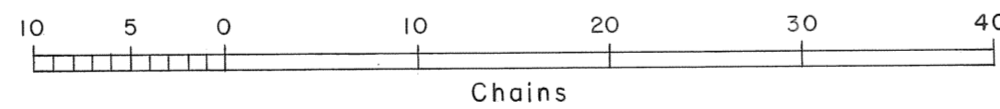
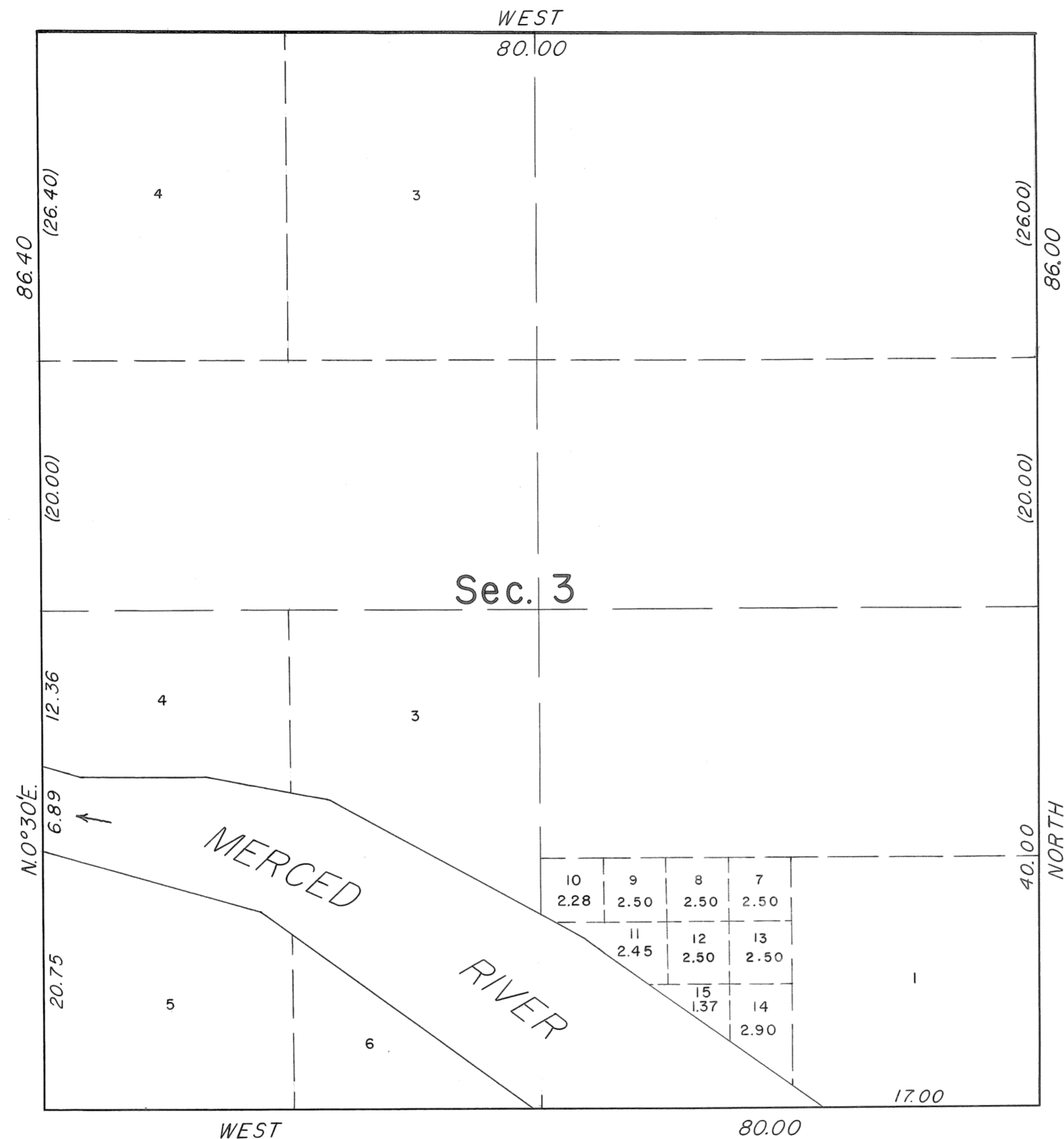


TOWNSHIP 5 SOUTH, RANGE 15 EAST, OF THE MOUNT DIABLO MERIDIAN, CALIFORNIA.
SUPPLEMENTAL PLAT



This plat, showing amended lottings in Section 3, Township 5 South, Range 15 East, Mount Diablo Meridian, California, is based upon the plat approved March 31, 1855.

UNITED STATES DEPARTMENT OF THE INTERIOR
BUREAU OF LAND MANAGEMENT
Washington, D. C. August 19, 1959

This plat, showing amended lottings, is based upon the official records, and having been correctly prepared in accordance with the regulations, is hereby accepted.

For the Director

Carl G. Harrington
Cadastral Engineering Staff Officer

PAN