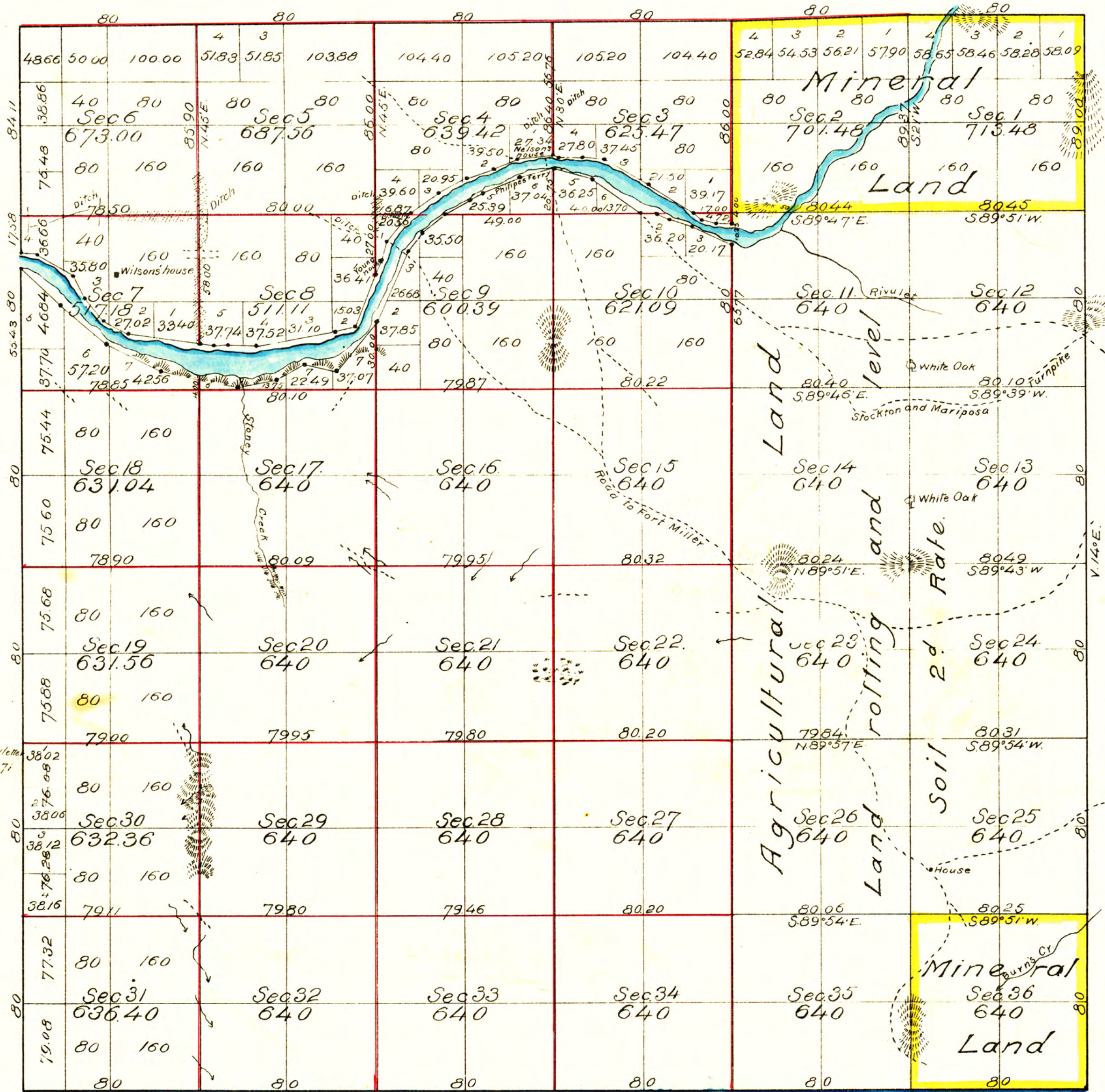


Township N<sup>o</sup>5 South, Range N<sup>o</sup>15 East Mount Diablo Meridian

A.B

2

2



Aggregate Area of Public Land	22901.74 Acres
Estimated " " River	413.74 "
Aggregate	<u>23315.48 "</u>

Note:  
The North bdy of sec. 33  
should be 79.66 as shown  
on original plat and in  
original notes.

Variation used by von Schmidt 14°30' E.  
" " " Reed 15°30' E.

See Surv. Gen. file  
April 17<sup>th</sup> 1871

Surveys Designated	By whom surveyed	Date of Contract	Amount of Surveys	When Surveyed
North boundary of Township (red)	A.W. von Schmidt	May 26 <sup>th</sup> 1853 & April 3 <sup>rd</sup> 1854		1853 & 1854
Township lines colored blue	" " "	May 26 <sup>th</sup> 1853		1853
Rest of Township lines	Edward Twitchell	Aug. 23 <sup>rd</sup> 1855		1855
Section lines colored red	A.W. von Schmidt	Dec. 31 <sup>st</sup> 1854		1855
Meanders	" " "	" " "		1855
Rest of Section lines	John Reed	Aug. 7 <sup>th</sup> 1859	16 mls 11chs. 951ks	Aug. 30 <sup>th</sup> 1859

The above Map of Township N<sup>o</sup>5 South, Range N<sup>o</sup>15 East, Mount Diablo Meridian is strictly conformable to the field notes of the Surveys thereof, on file in this Office which have been examined and approved  
Surveyor General's Office  
San Francisco California  
February 5<sup>th</sup> 1870

DEPARTMENT OF THE INTERIOR,  
GENERAL LAND OFFICE,  
Washington, D. C. Jan. 29 1907  
I hereby certify that this photo-lithograph is a true and literal exemplification of the township plat of survey to which it purports to relate, now on file in this office,  
Sherman Day  
Surv. Gen. Cal.

44 329

96

T5S R15E MD