

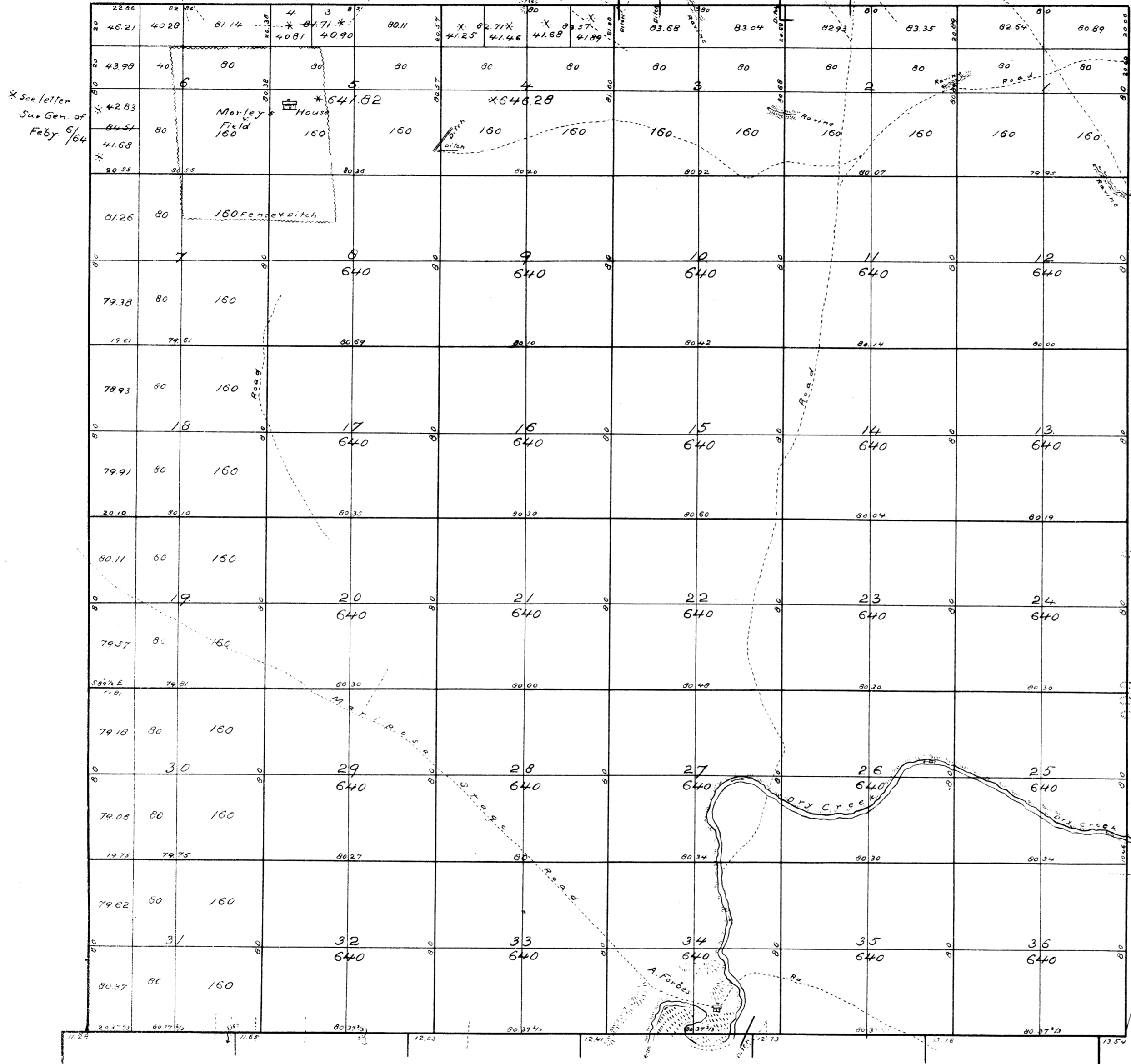
T. 4. S - R. 13. E.

H.C.H.
J.U.

MOUNT DIABLO MERIDIAN.

* See Sur Generals letter of April 27 1867.

* See Sur Gen's letter of April 28th 1866.



School lands 1280 acres
Aggregate area 23078.64 acres

The above plat of Township N^o 4 South Range N^o 13 East (of Mount Diablo Base & Meridian Line) has been made out from and in conformity to the field notes of the undermentioned Surveys thereof, returned to and filed in this Office, which have been examined and approved

Under Contract Dated	Contract With	Work executed and exhibited	Distance			Cost		Payments charged in Accounts of the Surveyor General for the
			Miles	chs.	fks.	Dollrs.	Cents	
January 31 st 1853	F. R. Loring	North Boundary of Township	6	02	66	84	50	3 rd Quarter 1853
recurveyed under instructions		South	6	02	26	90	42	" " "
April 3 rd 1854	A. W. von Schmidt	East	6	00	00	84	00	" " "
April 3 rd 1854	A. W. von Schmidt	West	6	00	00	84	00	" " "
		Section Lines	60	09	40	721	41	2 nd & 3 rd " 1854
						1064	33	

Surveyor General's Office
San Francisco California
December 30th 1854.

John C. Hayes
Surveyor General California.

DEPARTMENT OF THE INTERIOR
GEOLOGICAL SURVEY

Washington, D. C. Jan. 27, 1907

I hereby certify that this plat is a true and literal exemplification of the township plat of survey to which it relates, now on file in this office.

M. A. Richards T4SR13EMD