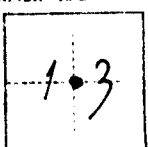


CORNER RECORD

COUNTY OF FRESNO T 11 S R 12 E MDBB MERIDIAN CALIFORNIA
 CORNER TYPE: GOVT. CORNER MEANDER RANCHO CONTROL OTHER
 CORNER IDENTIFICATION — DATE OF VISIT JAN 7 1977



C 1/4 13 BRYANT & LUX ALIGN

D. R. PERRY
E. BOYLE
B. GARCIA

CORNER — LEFT AS FOUND FOUND AND TAGGED REESTABLISHED OBLITERATED CORNER REBUILT

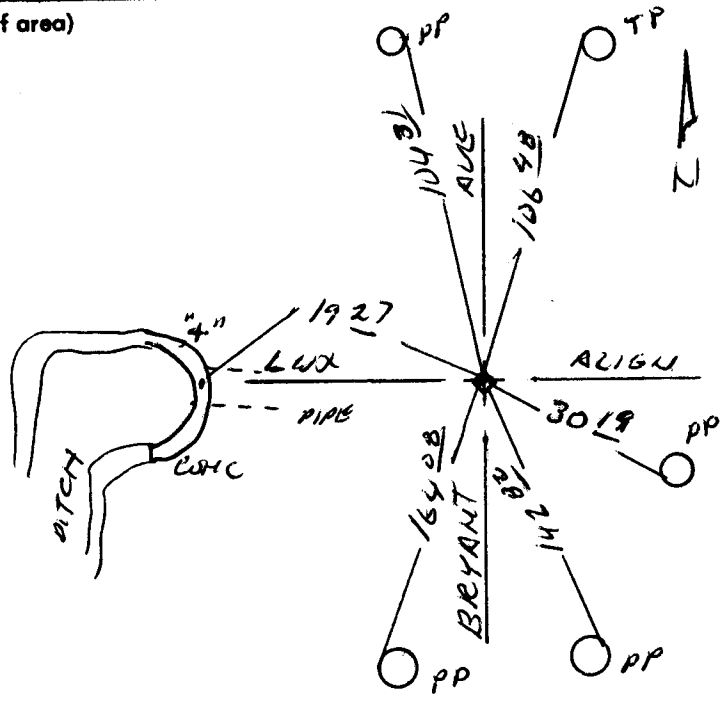
PHYSICAL DESCRIPTION OF CORNER FOUND; EVIDENCE AND METHOD USED TO IDENTIFY OR REESTABLISH
FOUND A 1" BOLT HEAD SET FLUSH W/2, 2 PD SPREADERS
OLD TIES DESCRIBE A 3X3 REDWOOD, POSSIBILITY LOST DUE TO
R.D. CONST.

PHYSICAL DESCRIPTION OF MONUMENTS REBUILT OR PERPETUATED
SET R.C.E. TAG # 14344

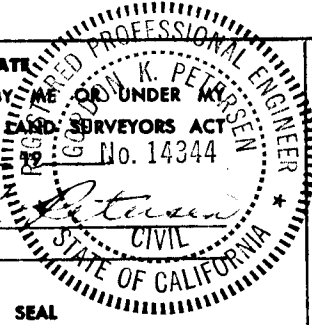
CALIFORNIA COORDINATE SYSTEM ORDER: FIRST SECOND THIRD
 STATIONS USED: NGS (USC & GS) STATE COUNTY OTHER STATION _____ STATION _____
 ZONE _____ ELEVATION _____ NORTHINGS (Y) _____ EASTINGS (X) _____

SKETCH: (Include reference tie or witness points, remarks and topo of area)

1927 E OF "4" ON CONC HDWL
286 W OF TPL-N
10431 SE OF @ IN PP
10648 SW OF @ IN TP
3017 WNW OF @ IN PP
14282 NW OF @ IN PP
16408 NE OF @ IN PP



SURVEYOR'S CERTIFICATE
 THIS CORNER RECORD WAS PREPARED BY ME OR UNDER MY DIRECTION IN CONFORMANCE WITH THE LAND SURVEYORS ACT ON JANUARY 7, 1977 FOR THE COUNTY OF FRESNO.
 SIGNED: Jason K. Peterson
 L.S. or R.C.E. No.: 14344



COUNTY SURVEYOR'S CERTIFICATE
 THE CORNER RECORD WAS RECEIVED FEB. 11, 1977 AND EXAMINED AND FILED MAY 27, 1977.
 BY: [Signature]
 TITLE: CE III
 DOCUMENT No. 1085
 STATEMENT ON BACK OF SHEET YES NO