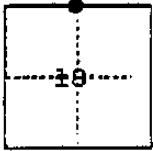


COUNTY OF Fresno T. 11 S. R. 13 E. M.D.B. & MERIDIAN CALIFORNIA

CORNER TYPE: GOVT. CORNER MEANDER RANCHO CONTROL OTHER

CORNER IDENTIFICATION — DATE OF VISIT July 12, 1976



North Quarter Corner, Section 18, Township 11 South, Range 13 East

VALERIA & CUSTER AVENUES

CORNER — LEFT AS FOUND FOUND AND TAGGED REESTABLISHED OBLITERATED CORNER REBUILT

PHYSICAL DESCRIPTION OF CORNER FOUND, EVIDENCE AND METHOD USED TO IDENTIFY OR REESTABLISH

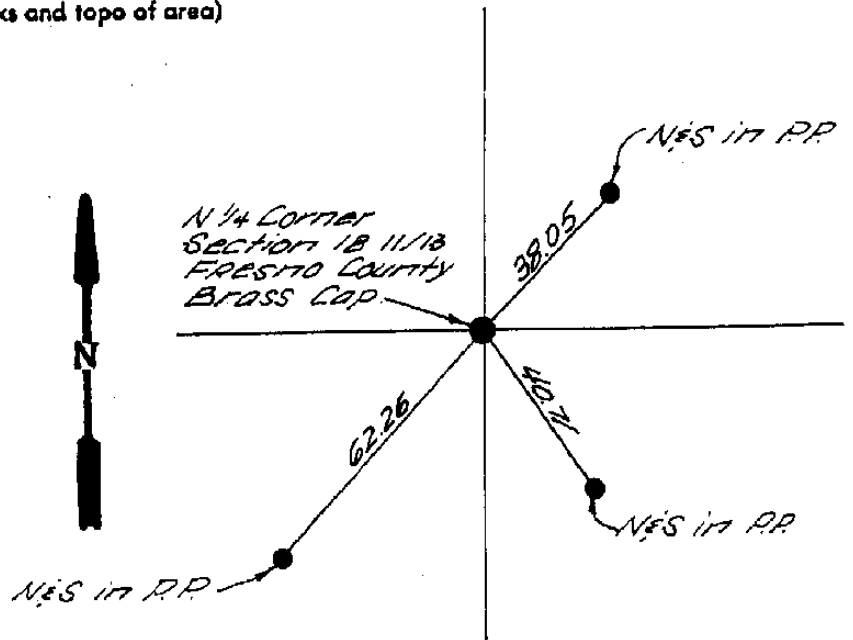
Fresno County Brass Cap found in hand hole monument box.

PHYSICAL DESCRIPTION OF MONUMENTS REBUILT OR PERPETUATED

CALIFORNIA COORDINATE SYSTEM ORDER: FIRST SECOND THIRD
STATIONS USED: NGS (USC & GS) STATE COUNTY OTHER STATION _____ STATION _____
ZONE _____ ELEVATION _____ NORTHINGS (Y) _____ EASTINGS (X) _____

SKETCH: (Include reference tie or witness points, remarks and topo of area)

38.05 ft. SW of N & S in Power Pole
40.71 ft. NW of N & S in Power Pole
62.26 ft. NE of N & S in Power Pole



THIS CORNER RECORD SW 4158 PREPARED BY ME OR UNDER MY DIRECTION IN CONFORMANCE WITH THE LAND SURVEYORS ACT ON July 12, 1976

for SLWD SIGNED: Johnny E. Davis L.S. 4156

COUNTY SURVEYOR'S CERTIFICATE
THE CORNER RECORD WAS RECEIVED JAN 13, 1977
AND EXAMINED AND FILED JUN 7, 1977
BY: [Signature]
TITLE: CE IV
DOCUMENT No. 1128