

CORNER RECORD

COUNTY OF FRESNO T. 11 S. R. 13 E. M.D. BASE + MERIDIAN CALIFORNIA

CORNER TYPE: GOVT. CORNER MEANDER RANCHO CONTROL OTHER

CORNER IDENTIFICATION - DATE OF VISIT OCT. 7 1982

19

N.W. COR. SEC. 19 T. 11 S. R. 13 E. M.D. B. + M.

@ INTERSECTION OF SHAIN AND BRANNON AVENUES

CORNER - LEFT AS FOUND FOUND AND TAGGED REESTABLISHED OBLITERATED CORNER RESULT

PHYSICAL DESCRIPTION OF CORNER FOUND; EVIDENCE AND METHOD USED TO IDENTIFY OR REESTABLISH

FOUND 1 1/4 IN. I.P., 16 IN. UNDER PAVEMENT
 AS PER FRESNO COUNTY TIES ON RECORD
 PLASTIC TAG NOT LEGIBLE

PHYSICAL DESCRIPTION OF MONUMENTS RESULT OR PERPETUATED

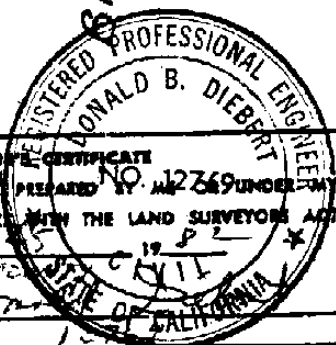
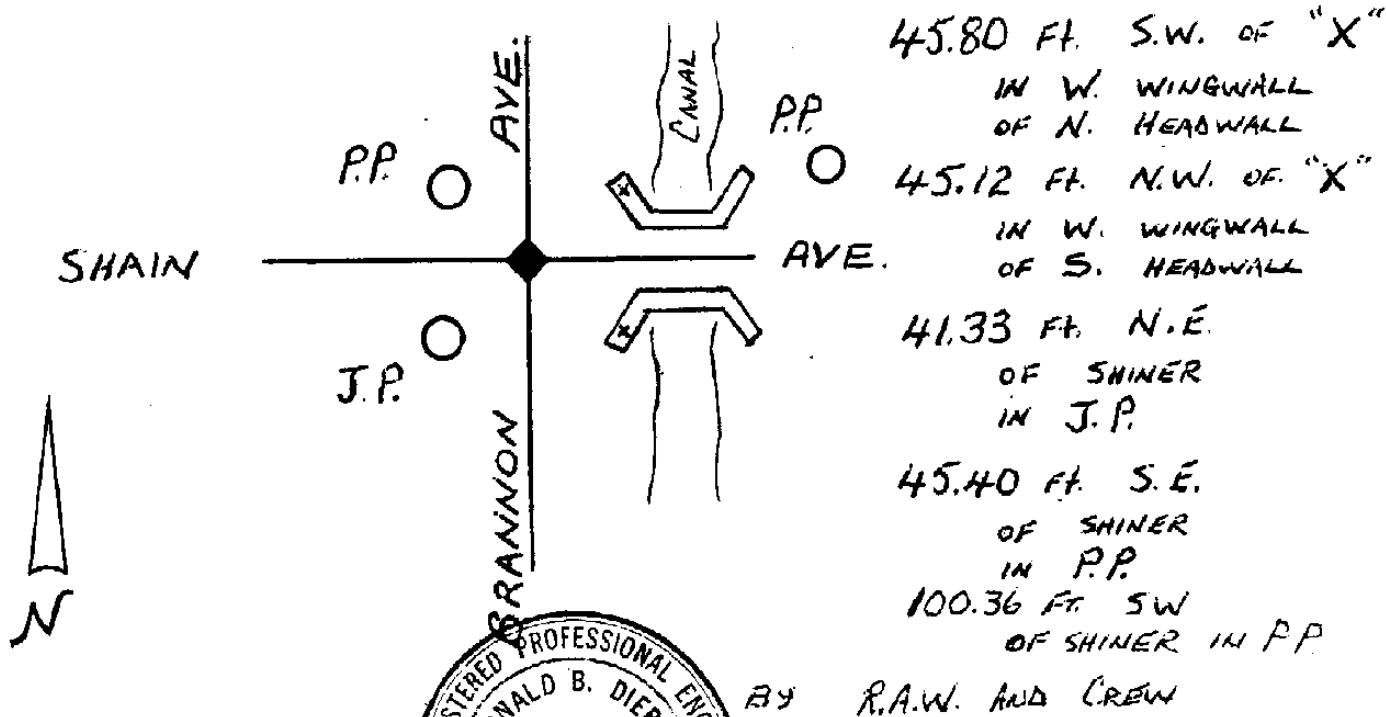
REMOVED PLASTIC TAG
 SET BRASS TAG STAMPED R.C.E. 12769

CALIFORNIA COORDINATE SYSTEM ORDER: FIRST SECOND THIRD

STATIONS USED: NGS (USC & GS) STATE COUNTY OTHER STATION _____

ZONE _____ ELEVATION _____ NORTHINGS (N) _____ EASTINGS (E) _____

SKETCH: (Include reference tie or witness points, remarks and topo of area)



SURVEYOR'S CERTIFICATE

THIS CORNER RECORD WAS PREPARED BY ME NO. 12769 UNDER MY DIRECTION IN CONFORMANCE WITH THE LAND SURVEYORS ACT ON OCT 27 1982 FOR FRESNO COUNTY CALIFORNIA

SIGNED: [Signature]

L.S. W. R.C.E. No. _____

COUNTY SURVEYOR'S CERTIFICATE

THE CORNER RECORD WAS RECEIVED OCT. 26 1982 AND EXAMINED AND FILED OCT 27 1982 BY [Signature] TITLE [Signature]

DOCUMENT No. 2731

STATEMENT ON BACK OF SHEET YES NO

SEAL