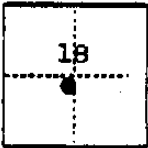


COUNTY OF Fresno T. 11 S. R. 13 E. M.D.B. & MERIDIAN CALIFORNIA

CORNER TYPE: GOV'T. CORNER MEANDER RANCHO CONTROL OTHER

CORNER IDENTIFICATION - DATE OF VISIT July 12, 1976



Northeast Corner, Lot 36 of Miller & Lutz Subdivision of Section 18, Township 11 South, Range 13 East, Map recorded May 21, 1904.

CORNER - LEFT AS FOUND FOUND AND TAGGED REESTABLISHED OBLITERATED CORNER REBUILT

PHYSICAL DESCRIPTION OF CORNER FOUND, EVIDENCE AND METHOD USED TO IDENTIFY OR REESTABLISH

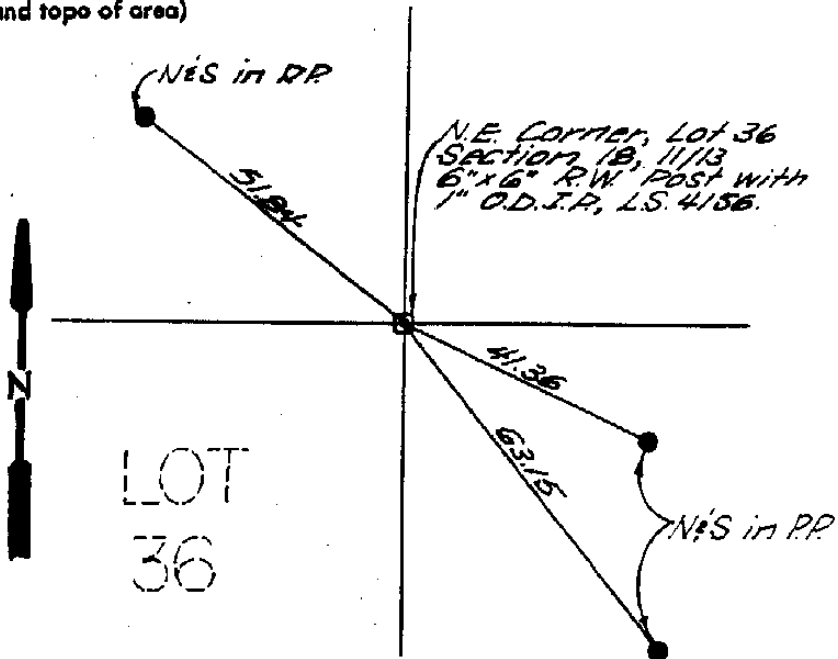
Found 6" x 6" Redwood 1.5 ft. below ground line. Drove a 1" x 28" galvanized iron pipe, with a plastic plug marked L.S. 4156, into center of same.

PHYSICAL DESCRIPTION OF MONUMENTS REBUILT OR PERPETUATED

CALIFORNIA COORDINATE SYSTEM ORDER: FIRST SECOND THIRD
STATIONS USED: NGS (USC & GS) STATE COUNTY OTHER STATION _____
ZONE _____ ELEVATION _____ NORTHINGS (Y) _____ EASTINGS (X) _____

SKETCH: (include reference tie or witness points, remarks and topo of area)

51.84 ft. SE of N & S in Power Pole
41.36 ft. NW of N & S in Power Pole
63.15 ft. NW of N & S in Power Pole



THIS CORNER RECORD WAS PREPARED BY ME OR UNDER MY DIRECTION IN CONFORMANCE WITH THE LAND SURVEYORS ACT ON July 12, 1976 FOR SEWD OF CALIFORNIA
SIGNED Johnny E. Davis
L.S. # 4156

COUNTY SURVEYOR'S CERTIFICATE
THE CORNER RECORD WAS RECEIVED JAN 13, 1977
AND EXAMINED AND FILED JUN 7, 1977
BY [Signature]
TITLE CE II
DOCUMENT No. 1127