

CORNER RECORD

COUNTY OF Fresno T. 1 S. R. 13 E. M.D. P. 4 MERIDIAN CALIF. 1976
 CORNER TYPE: GOVT. CORNER MEANDER RANCHO CONTROL OTHER
 CORNER IDENTIFICATION - DATE OF VISIT Jan 6, 1976



N/4 Cor Sec. 19 1/13

CORNER - LEFT AS FOUND FOUND AND TAGGED REESTABLISHED OBLITERATED CORNER RESULT

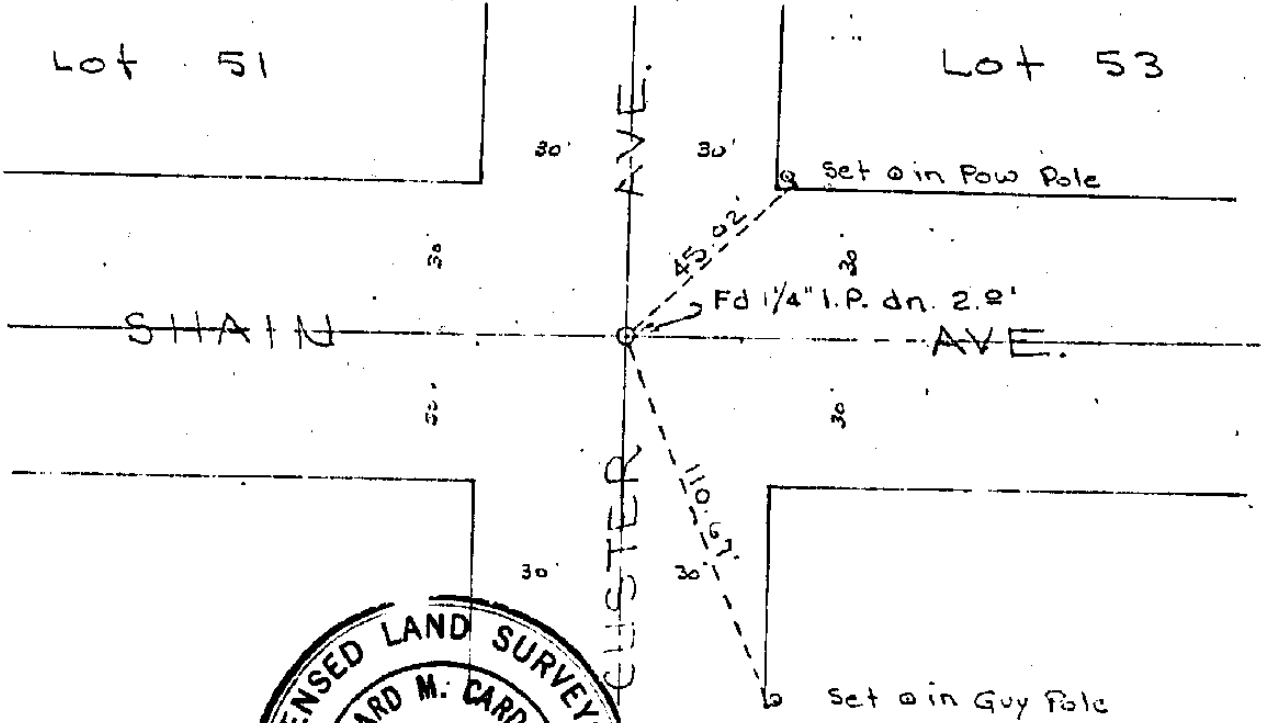
PHYSICAL DESCRIPTION OF CORNER FOUND; EVIDENCE AND METHOD USED TO IDENTIFY OR REESTABLISH

Found 1/4" Iron pipe down 2.0 feet
 TAGGED p.p.c 2.5.3733

PHYSICAL DESCRIPTION OF MONUMENTS RESULT OR PERPETUATED

CALIFORNIA COORDINATE SYSTEM ORDER: FIRST SECOND THIRD
 STATIONS USED: NGS (USC & GS) STATE COUNTY OTHER STATION _____
 ZONE _____ ELEVATION _____ NORTHINGS (?) _____ EASTINGS (?) _____

SKETCH. (Include reference tie or witness points, remarks and topo of area)



SURVEYOR'S CERTIFICATE
 THIS CORNER RECORD WAS PREPARED BY ME OR UNDER MY DIRECTION IN CONFORMANCE WITH THE LAND SURVEYORS ACT ON FEB 27 1976
 SIGNED: [Signature]
 U.S. or REG. No. 6239

COUNTY SURVEYOR'S CERTIFICATE
 THE CORNER RECORD WAS RECEIVED July 18, 1976 AND EXAMINED AND FILED July 28, 1976
 BY: [Signature]
 TITLE: [Signature]
 DOCUMENT No. 00765
 STATEMENT ON BACK OF SHEET