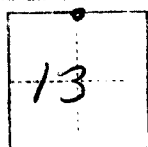


CORNER RECORD

COUNTY OF FRESNO T. 11 S R. 12 E MDBB MERIDIAN CALIFORNIA

CORNER TYPE: GOV'T. CORNER MEANDER RANCHO CONTROL OTHER

CORNER IDENTIFICATION — DATE OF VISIT JAN 7 1977



11 1/4 13 VALERIA & BRYANT

DR PERRY
E. BOYLE
B. GARCIA

CORNER — LEFT AS FOUND FOUND AND TAGGED REESTABLISHED OBLITERATED CORNER REBUILT

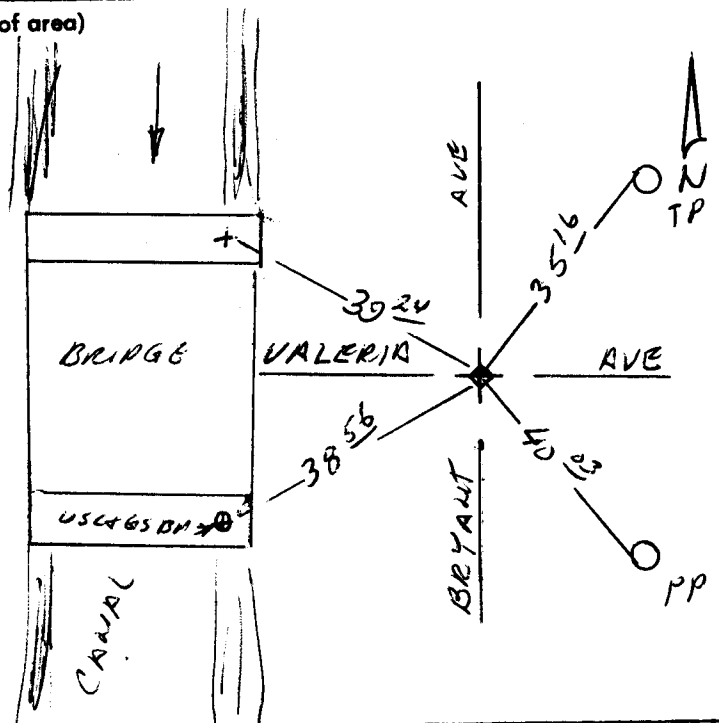
PHYSICAL DESCRIPTION OF CORNER FOUND; EVIDENCE AND METHOD USED TO IDENTIFY OR REESTABLISH
FOUND A PLASTIC LS TAG # 4156 SET OVER A 1/2" ± ROD OR PIPE WHICH IS SET IN CONCRETE 2" dn.

PHYSICAL DESCRIPTION OF MONUMENTS REBUILT OR PERPETUATED
NONE

CALIFORNIA COORDINATE SYSTEM ORDER: FIRST SECOND THIRD
 STATIONS USED: NGS (USC & GS) STATE COUNTY OTHER STATION _____ STATION _____
 ZONE _____ ELEVATION _____ NORTHINGS (Y) _____ EASTINGS (X) _____

SKETCH: (Include reference tie or witness points, remarks and topo of area)

40 03 NW OF 0 14 PP
35 16 SW OF 0 14 TP
39 24 ESB OF "+" AT EAST END
 OF CONC BRIDGE
38 56 ENE OF OR USC&GS BM
(12 RA)
27 5 N. OF PL-E
26 0 W OF PL-N



SURVEYOR'S CERTIFICATE
 THIS CORNER RECORD WAS PREPARED BY ME OR UNDER MY DIRECTION IN CONFORMANCE WITH THE LAND SURVEYORS ACT ON JANUARY 7, 1977 FOR THE COUNTY OF FRESNO.
 I am a REGISTERED PROFESSIONAL ENGINEER No. 14344
 SIGNED: Gordon K. Petersen
 CIVIL ENGINEER
 STATE OF CALIFORNIA

COUNTY SURVEYOR'S CERTIFICATE
 THE CORNER RECORD WAS RECEIVED FEB. 11, 1977 AND EXAMINED AND FILED MAY 21, 1977 BY [Signature] TITLE CE III
 DOCUMENT No. 1084
 STATEMENT ON BACK OF SHEET YES NO

SEAL